

# Budget consultation 2018<sup>+</sup>

10 January 2018



## Why are we consulting?

### **We want to hear your views about how we spend your money to meet the needs of the city**

- There are clear challenges for the city
- We have listened to what we have been told and developed a clear long term vision and priorities
- We have a clear long term strategy in place to support the economic growth of the city
- But we will have less money in the future
- This is one of your opportunities to influence that decision making

# The challenge

Birmingham continues to wrestle with some deep-seated challenges...

## OBESITY

**25%**

of 10–11 year olds are obese



**20%** National average

NOT SATISFIED

**16%**

of 15 year olds are not satisfied with life

**1 IN 3**  
CHILDREN LIVE IN POVERTY



**128,000**

children (0–15yr olds) live in the bottom decile households

**10.8%**

growth in number of children aged 5–15 over the next 20 years (2017–2037)

## INFANT MORTALITY



**7.9**

Birmingham

**3.9**

National average

## CYCLING

**<1%**



percentage of children who cycle to school

## PHYSICAL ACTIVITY

(adults 19yrs+)

**61.2%**

Birmingham

**64.9%**

National



## FUEL POVERTY

**17TH**

Out of 326 English local authorities, Birmingham ranks 17th for proportion of fuel poor households



**LIFE EXPECTANCY**

The difference between most affluent and most deprived areas

**10.6yrs**

less for men

**8.2yrs**

less for women



**SOCIAL CONTACT**

**>50%**

More than half of adult carers would like more social contact



Making a positive difference everyday to people's lives

# Vision and priorities for Birmingham City Council

## OUR VISION:

A city of growth where every child, citizen and place matters



### CHILDREN

A great city to grow up in

Make the best of our unique demography and create a safe and secure city for our children and young people to learn and grow.



### HOUSING

A great city to live in

Provide housing in a range of types and tenures, to meet the housing needs of all of the current and future citizens of the city.



### JOBS & SKILLS

A great city to succeed in

Birmingham will be renowned as an enterprising, innovative and green city.

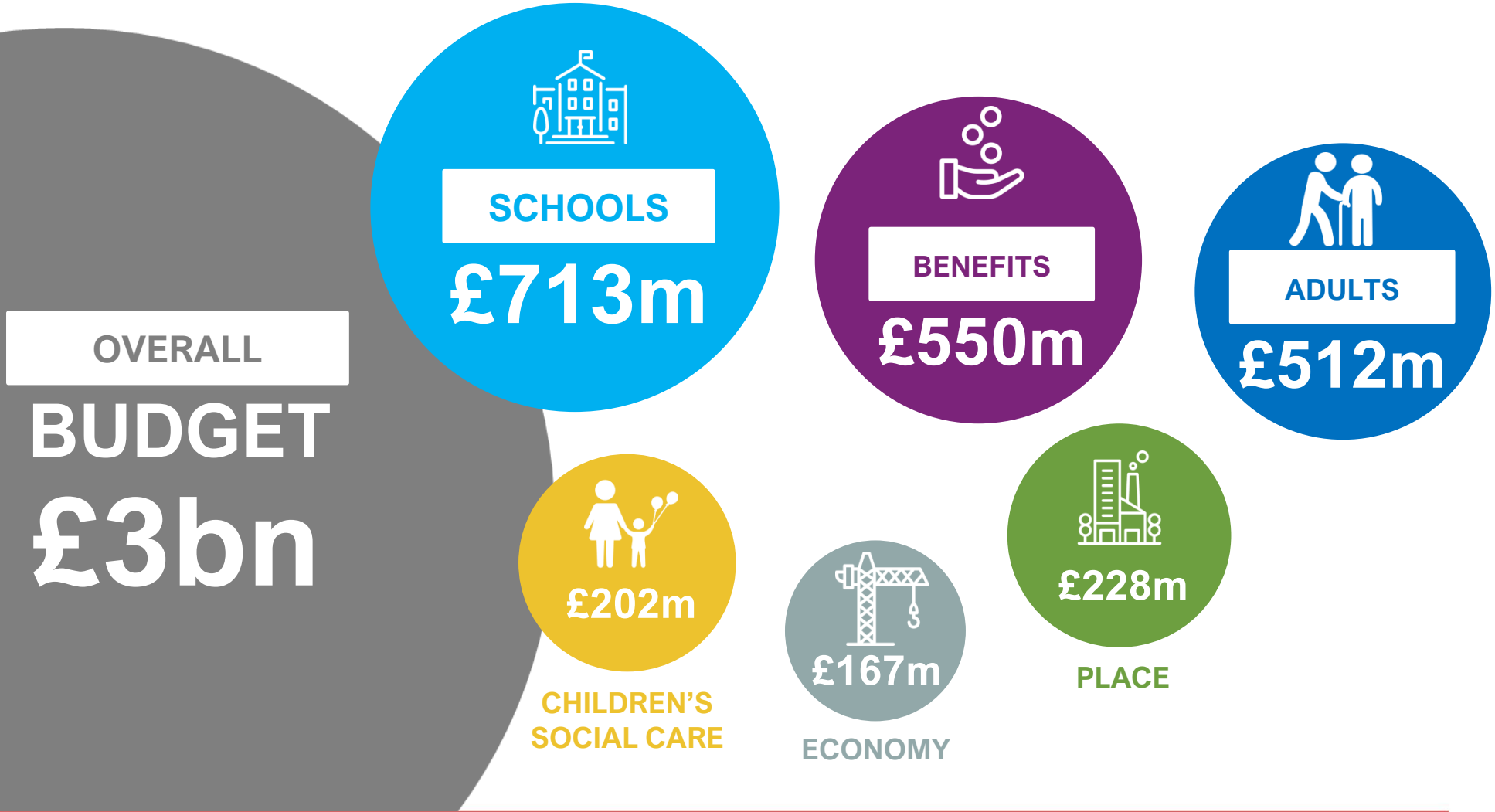


### HEALTH

A great city to grow old in

Helping people become healthier, especially relating to physical activity.

# Making a positive difference every day



## Our financial challenge

30%

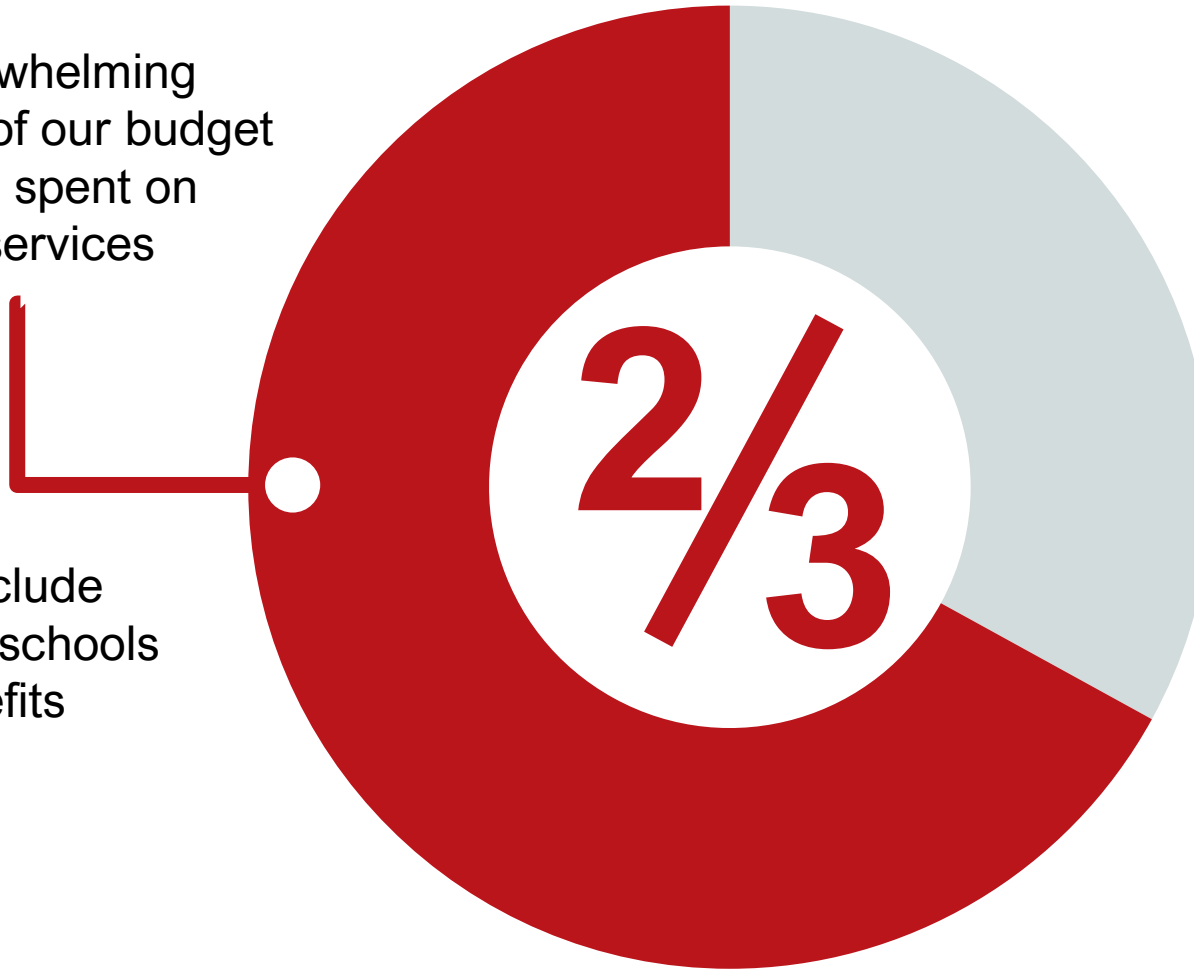
- Of controllable spend comes from council tax income
- This goes towards a range of services in line with the Council's priorities



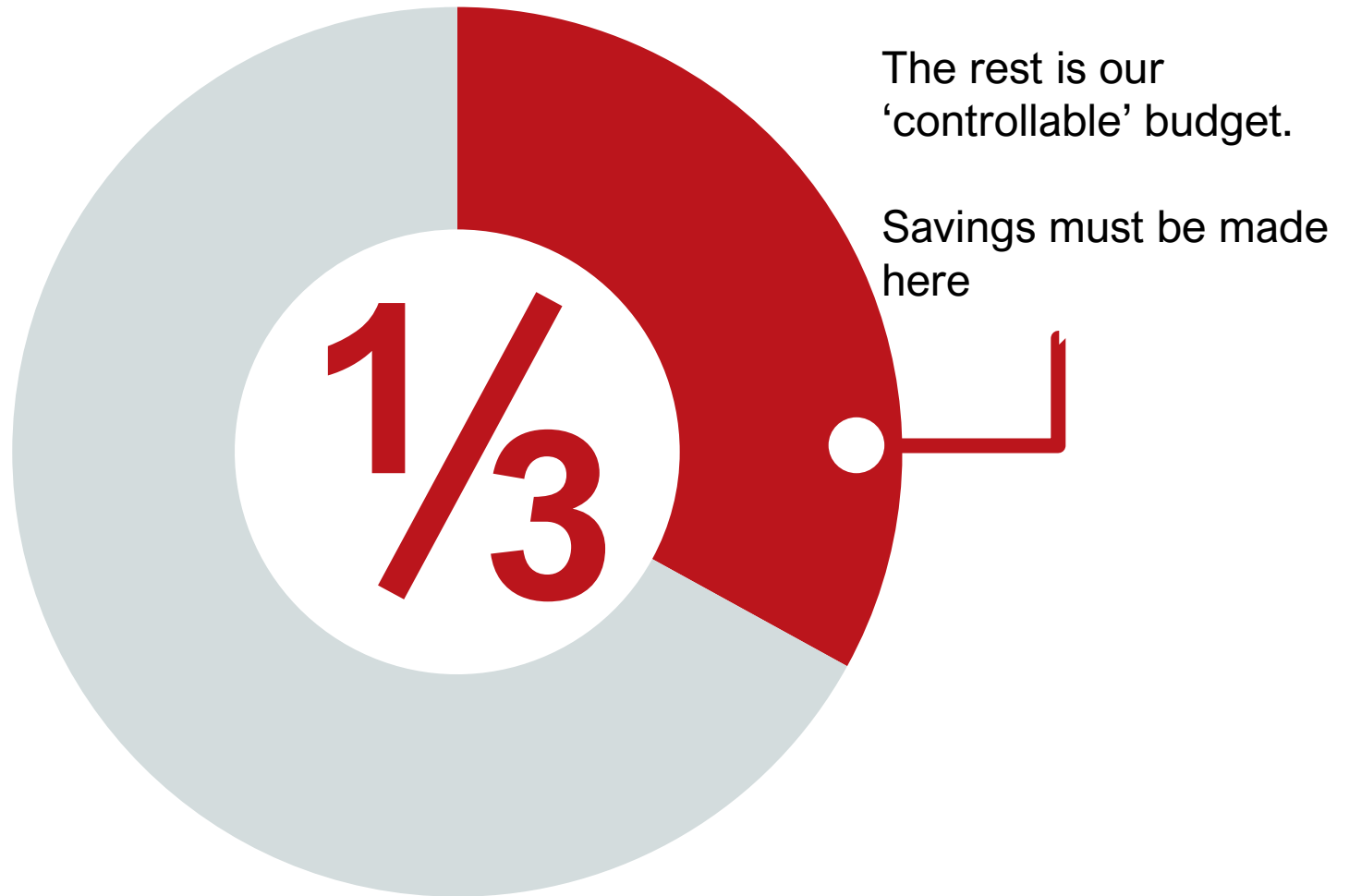
# Our financial challenge

The overwhelming majority of our budget has to be spent on specific services

These include housing, schools and benefits



# Our financial challenge





We have already reshaped what we do

We have already made savings of around

**£642m**

since 2010 as a direct result  
of Government cuts and spending pressures



# We know that we need to find a way of delivering services with less money

If the Government continues to cut public spending, by 2021/22 we will need to make further savings of

£111m

this is the equivalent of over 13% of our net budget for 2017/18

# The 2018/19 budget consultation

We have assumed an annual increase in Council Tax of 1.99% and we will continue to take the ability to raise a 'social care precept' of a further 3% to provide extra funding to meet the costs of social care. The total increase assumed in the consultation is 4.99%

## 2018/19

|  | £m          |
|--|-------------|
| Changes in corporate government grants                   | 27          |
| Changes in Council Tax/Business rates and related grants | (71)        |
| Expenditure pressures                                    | 98          |
| <b>SAVINGS REQUIREMENT</b>                               | <b>54</b>   |
| Savings in financial plan 2017+                          | (63)        |
| Savings not delivered                                    | 23          |
| <b>Savings being consulted on</b>                        | <b>(14)</b> |

# Making a positive difference every day

## Principles for how we'll operate in the future

1

We'll put citizens and neighbourhoods at the heart of our decision making – working with our partners to make this happen.

2

We'll promote the independence of the people who use our services.

3

We'll use our assets carefully to support growth in areas such as jobs and homes – ensuring that everyone can benefit.

4

We'll support our decision making with strong evidence and the resources to deliver.

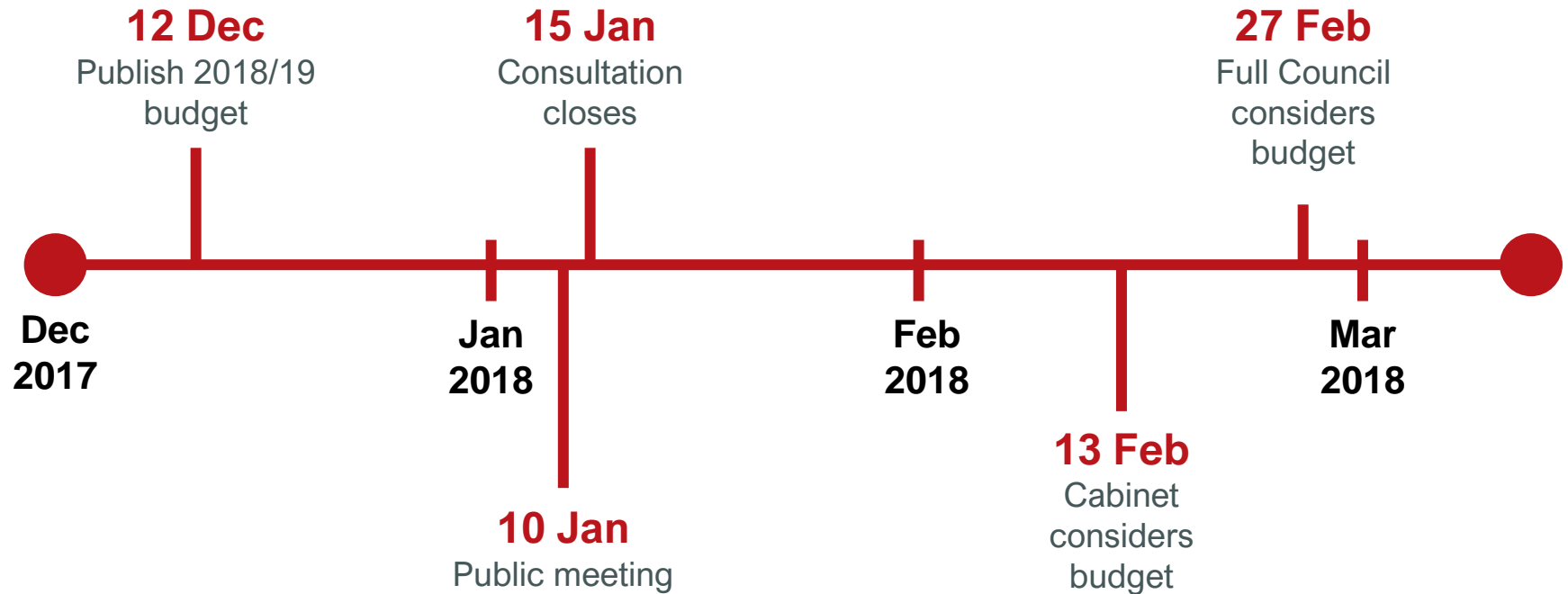
5

We'll be flexible and agile so we can respond quickly to the changing needs of the city and its citizens.

6

Our values are important to staff and citizens, so we'll make sure we work to them.

# What happens next?



# 1

---

**Read the proposals**

[birmingham.gov.uk/brumbudget18](http://birmingham.gov.uk/brumbudget18)

# 2

---

**Complete the online survey**

[birminghambeheard.org.uk](http://birminghambeheard.org.uk)

# 3

---

**Or join the conversation online**

**Twitter:** #BrumBudget18

**Facebook**



**Making a positive difference** everyday to people's lives