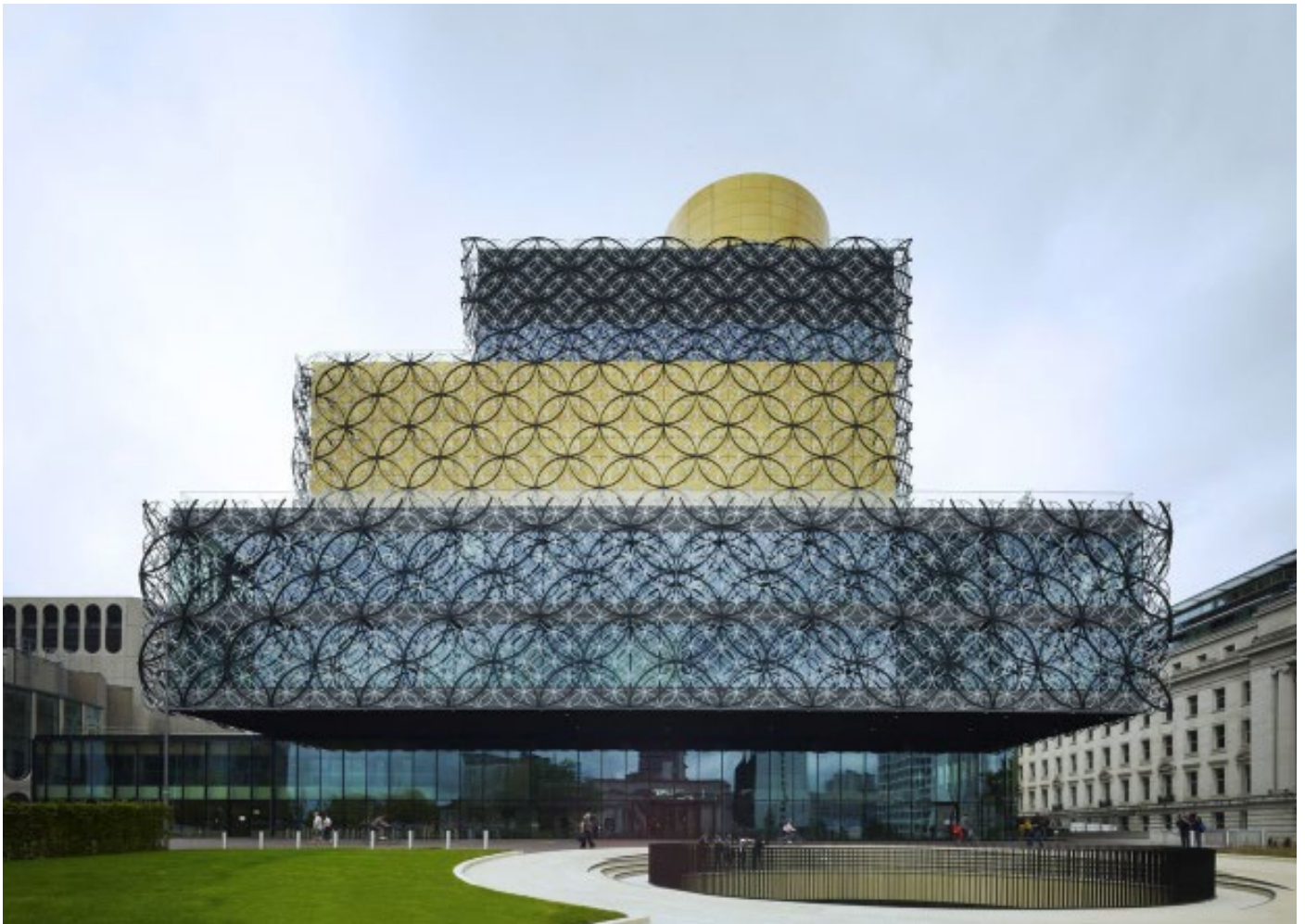




mecanoo

Library of Birmingham

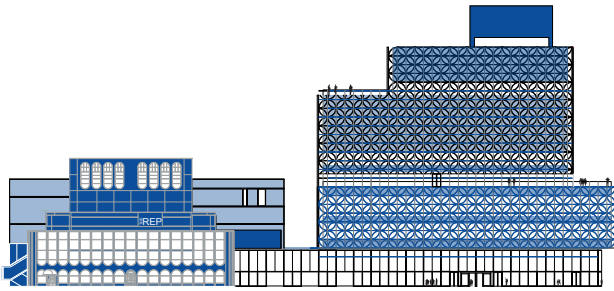
integrated with the REP





Library of Birmingham

integrated with the REP Theatre

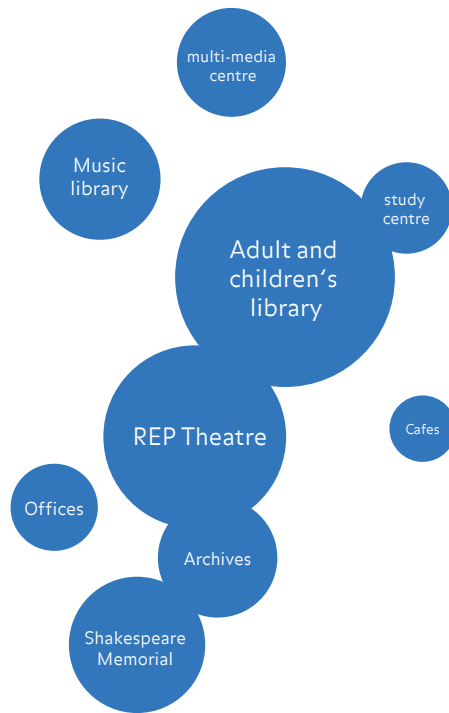


35,000 m²

The Library of Birmingham consists of a NEW-BUILD library of 29,000m²; renovation and integration and newly build of the Repertory Theatre (4,519 m² newly build + 1,852 m² refurbishment); as well as public realm works for the historic Centenary Square including a recessed circular performance space in the square which engages the public with the library programme via a public entertainment venue.

programme

Adult and children's library, study centre, music library, community health centre, multi-media centre, archives, rehoused Shakespeare Memorial Room designed in 1882 for the Central Library of Birmingham, offices, exhibition halls, cafes, lounge space, roof terraces, new shared performance space (300 seats) with neighbouring REP Theatre foyer and urban plan / landscape design for Centenary Square.



BREEAM Excellent

Natural daylight and ventilation provide a comfortable environment while passive energy use ensures ample day lighting.



Due to early design integration and the strength of Mecanoo's relationship with our sub-consultants and the Client, the project has achieved BREEAM Excellent design objectives.

consultation

On the Library of Birmingham, a series of workshops were undertaken during the concept and scheme design process to enable the briefing and whole building design approach to be developed.





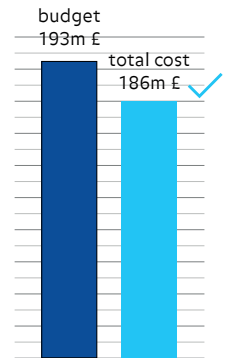
ambitions

The Library of Birmingham: the "People's Palace"

The Library of Birmingham has been developed with **Birmingham City Council** with an educationally-focused brief as a place of learning and community rather than a traditional library model. It includes several auditoria and learning spaces.

budget

Delivered on time and under budget including **Library of Birmingham, REP Theatre and Centenary Square works**.



→ Building is designed to host **10,000** people a day.

The façade has two layers of curved aluminium box sections, shaped into circles.

Large black circles are 5.4m in diameter, small silver circles are 1.8m in diameter. In total **5357** circles!

The Library of Birmingham was constructed using **21,000m³** of concrete in the frame, enough to fill more than eight Olympic sized swimming pools.

The frame is reinforced by **3,000** tonnes of steel reinforcement, the equivalent weight of around **35,750** average UK men.

30,000m³ of material, enough to fill **60,000** bath tubs, had to be dug out of the basement.

→ Footprint Library of Birmingham (upper floors foot print incl frieze)

Bottom block: L1 / L2:
(width x depth) 56,7 x 67,5m

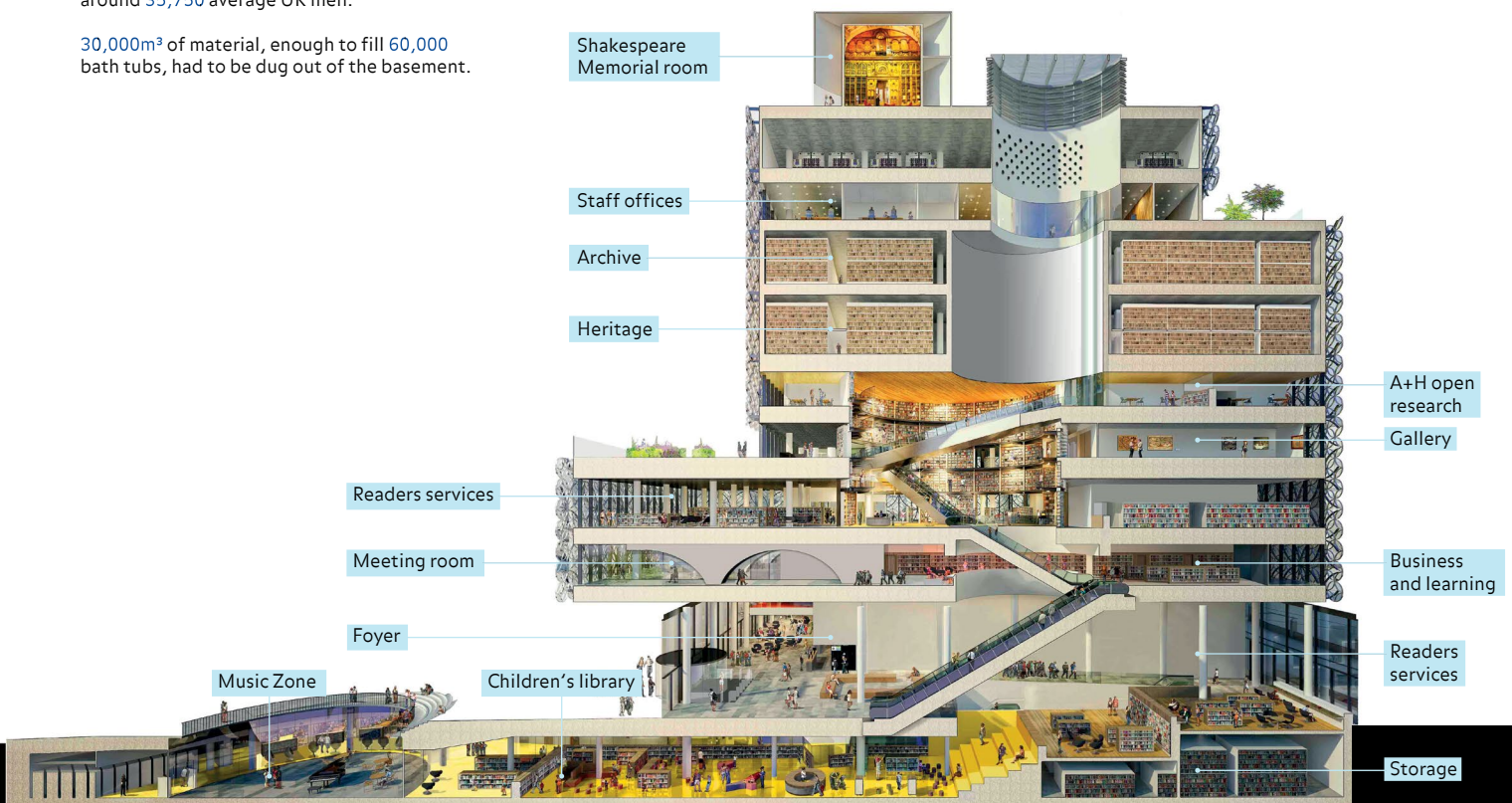
Middle block: L3 / L4 / L5 / L6:
(width x depth) 52,2 x 51,3m

Top block: L7 / L8 / L9:
(width x depth) 37,8 x 41,4m

→ Levels from Centenary Square

Roof of SMR:
59,63m (highest point)

Floor level LGF:
minus 6,12m (deepest point)





mecanoo

Credits

Client: Birmingham City Council
Architects and interior: Mecanoo, Delft, the Netherlands
Project management: Capita Symonds, Birmingham, United Kingdom
Engineering: Buro Happold, Birmingham, Glasgow, United Kingdom
Theatre consultant: Theateradvies, Amsterdam, the Netherlands
Design manager: Davis Langdon Schumann Smith, London, United Kingdom
Planning consultant: GVA, Birmingham, United Kingdom
Contractor: Carillion Building, West Midlands, United Kingdom
Post tension concrete frame: AJ Morrisroe & sons Ltd.
Facades: Lindner facades, London, United Kingdom
Book moving company: NEXUS

Suppliers

Roofing: Prater
Mechanical and Electrical installations: Emcor UK
Lifts, escalators and travelators: Otis
Architectural metalworks: JSM engineering Ltd, Nottingham, United Kingdom
Glazed partitions: Optima group, London, United Kingdom
Landscaping external terraces: Frosts & Prater
Contractor FFE: Demco interiors
Partitions: Horbury
Ceilings: Titan

Timeline

Appointed/contractual negotiations	August 2008
Stage A/B (client brief)	August – December 2008
Stage C (preliminary design)	February – May 2009
Stage D	June – September 2009
Planning application	June – August 2009
Stage ER	September – October 2009
Contractor pricing scheme	October – December 2009
Commitment to GMP + planning consent	December 2009
Start on site	January 2010
Construction	January 2010 – May 2013
Book and staff move, soft landings	May – August 2013
Opening	3rd September 2013

Mecanoo

Oude Delft 203
2611 HD Delft
the Netherlands

T +31 15 2798100
info@mecanoo.nl

Mecanoo UK

Cornwall Buildings
49 Newhall Street
Birmingham
B3 3QR, United Kingdom

CUBE Gallery, 4th Floor
113-115 Portland Street
Manchester
M1 6DW, United Kingdom

Mecanoo Asia

No. 1, Sanduo 1st Road
Lingya District
Kaohsiung City 802
Mr. Ching-mou Hou

T +886 (0)7 719 1358
ext. 356

we are on:



www.mecanoo.com

To obtain image material
please send an email to:

pr@mecanoo.nl

You will be sent a complete
set of drawings, floor plans
and sections via WeTransfer.
Architectural photographs
will be made available on 20
August. However, there is a
strict embargo on all
coverage from the press
preview until 29 August.