

Demographics

Birmingham Population 2016

1,124,569



Male



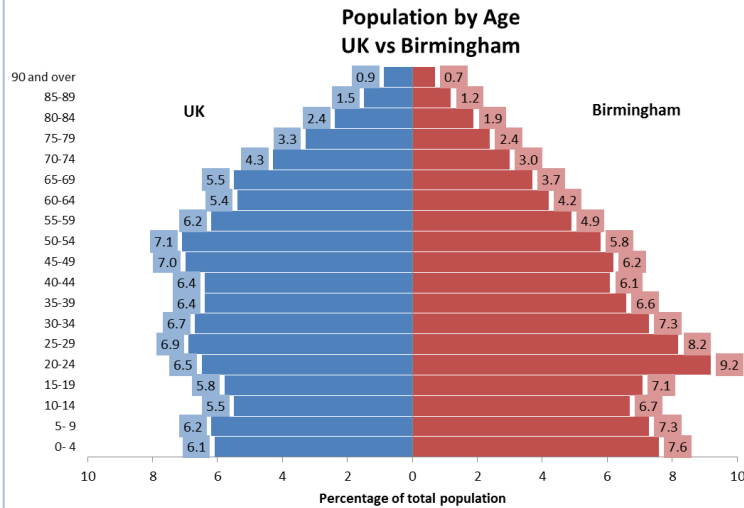
49.5%

Female



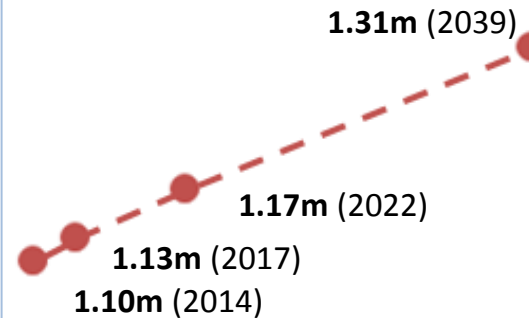
50.5%

Source: ONS Population Estimates (mid-2016)



Source: ONS Population Estimates (mid-2016)

Population Projection



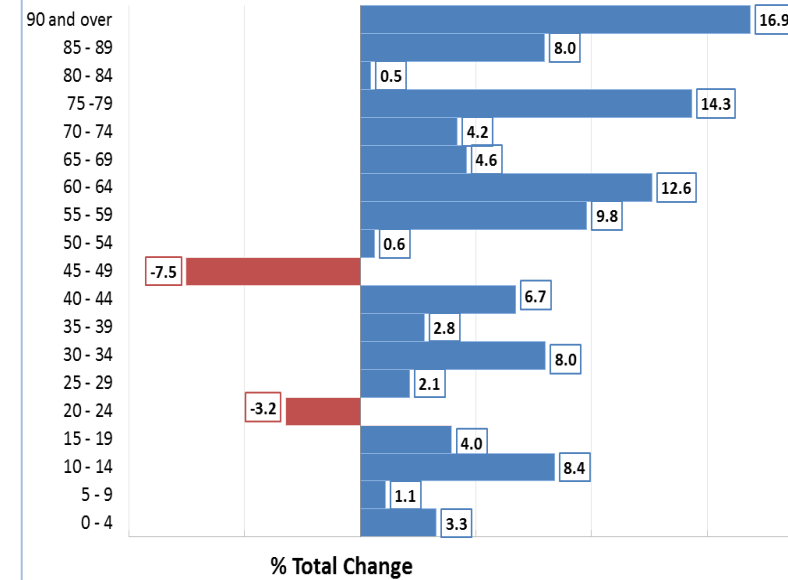
GP Data Estimates (2017)
1.24M

+98K Households by 2039 (DCLG)

Source: ONS Projections (2014)

% Change in Birmingham's Population 2017-2022

Based on ONS Mid-2014 Projections



Source: ONS Projections (2014)

New Immigrant GP Registrations Birmingham 2013-16

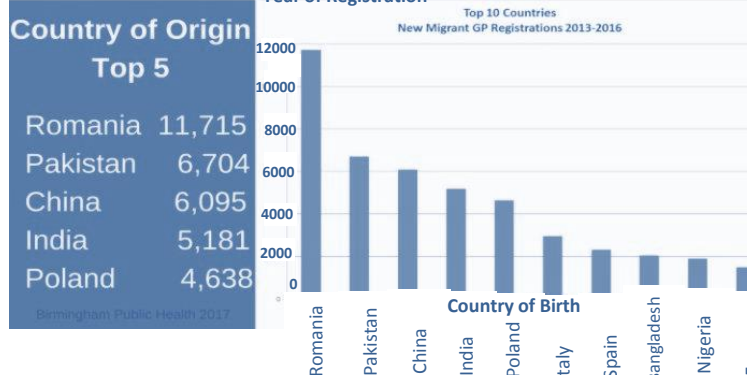
81,314 GP Registrations Birmingham 2013-16

Source: NHS Digital Flag 4 Registrations

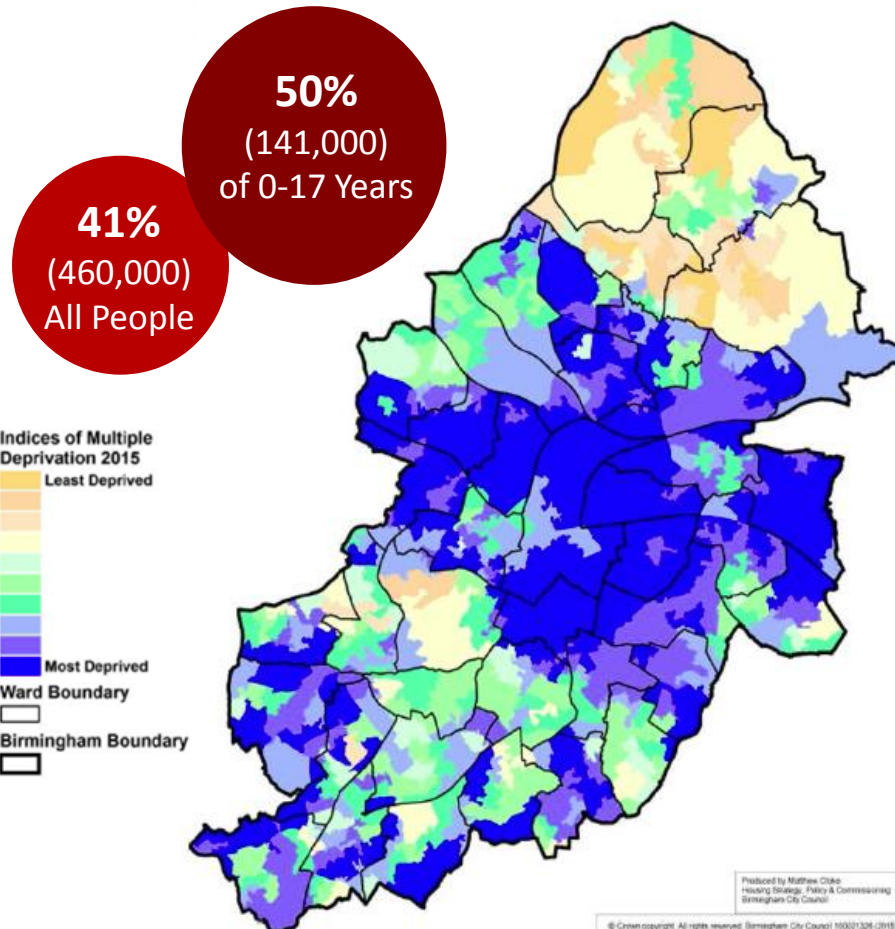


By Year

2013	16,765
2014	18,475
2015	22,284
2016	23,790

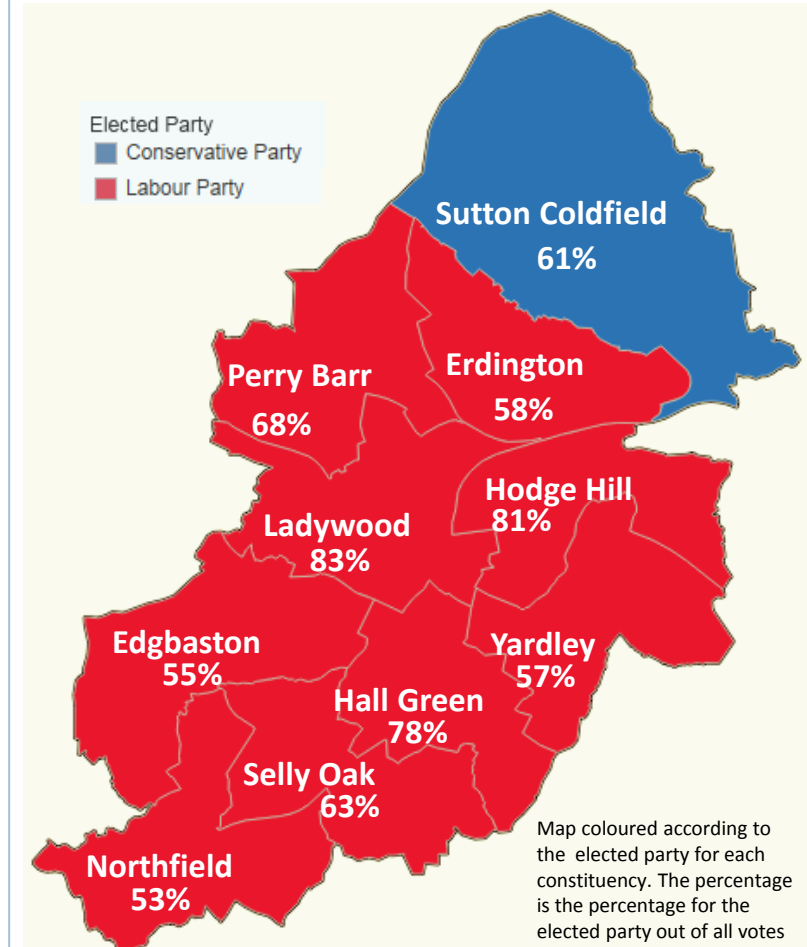


Life in the 10% Most Deprived Areas



Source: Index of Multiple Deprivation 2015 (DCLG) & ONS Population Estimates (2015)

June 2017 General Election Results



Source: 2017 General Election results for Birmingham.

School Funds

Mainstream School Over £140M

Special School £50M

£3M Used to create 60 posts and 16 SEN Places



Total school budget of which £19 Million Controllable budget

Children Birmingham

A great place to grow up in

School Population Overall

BME

*EAL

Free School Meals

SEN

Birmingham	66.6%	35.8%	28.9%	17.8%
Nationally	28.9%	17.3%	15.2%	15.5%

*EAL = English is additional language (i.e. English is not their first language)

Count of Schools by Type and Phase	LA Maintained Schools	Academy	Free Schools	Total	445 Schools + Over 40 Independents + 1,542 Early Years Private, Voluntary and Independent (PVI)s
Nursery	27			27	
Primary	188	108	2	298	
Secondary	26	46	7	79	
Special	24	3		27	
All Through	2	3	2	7	
Pupil Referral Unit	1			1	
Alternative			6	6	
Total	267	160	17	445	

Schools as of 1st August 2017

205,867 Pupils



Schools

Ofsted Good or Outstanding Education

81% Good or Outstanding

81% Primary

77% Secondary

24 schools In special measures

114,749 State funded primary
74,817 State funded secondary
8,645 Independents

3 and 4 year olds



93% benefiting from free early education

Children in Care (CIC)



Total number of CIC May 2017
1,735



Children in Need
84% supported to live in their own family (May 2017)

CIC rate per 10,000

Birmingham 65

National 60

Source: Children Social Care Information Management Team (2017)

Education Health Care Plans 0 - 25



SENAR maintains 5,224 EHCPs and 2,388 Statements for young people



% of Children in Workless Households (under 16)

Only includes those households that have at least one person aged 16 to 64.

Birmingham 19.6%
West Midlands 14.7%

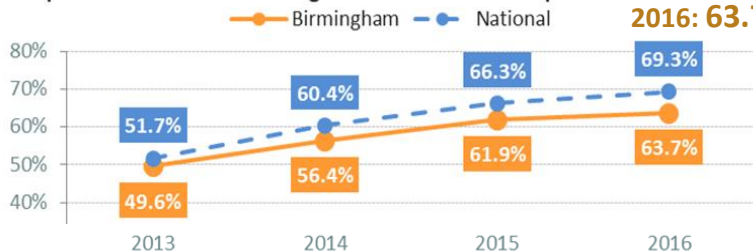
Source: ONS Annual Population Survey (2015)

Education Progress

Early Years Foundation Stage

Proportion of children Achieving a Good Level of Development

Birmingham 2016: 63.7%



Sustainable Travel Modeshift STARS
140 schools registered
20 Schools received accreditation

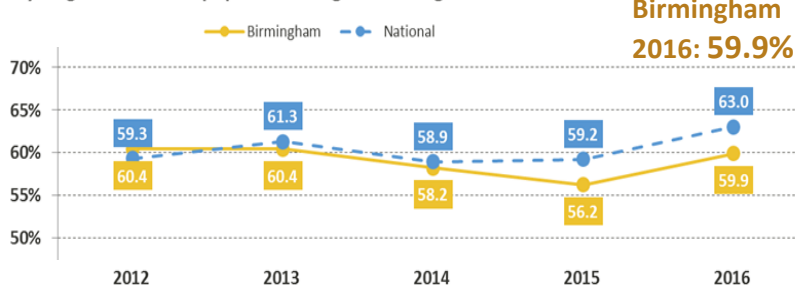
Source: Transportation Behaviour Change team (August 2017)



Travel Assist
Supporting over 4,500 children to travel to school

Key stage 4 2016: % of pupils achieving A*-C in English and Maths GCSEs

Birmingham 2016: 59.9%



Bikeability

2017 - 2018 Achieved to date (Apr - Aug 2017)

Target 11960

Achieved 3274 (27.4%)

Future Targets

Year	Target
2018 - 2019	12170
2019 - 2020	12153

Source: Big Birmingham Bikes (August 2017)

Think Family Phase 2

7,635

Families in Phase 2 (have at least two think family needs)

4,066

Families also eligible (Not currently in the programme)

Think Family Needs

Crime/ASB 30.9%

School Absence 25.4%

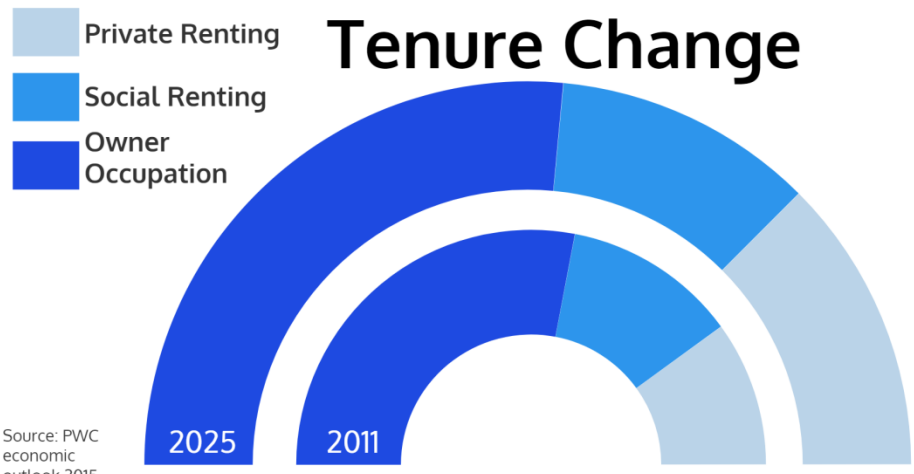
Childhood Need 64.8%

Jobs/£ 37.3%

Domestic Abuse 19.9%

Health 29.1%

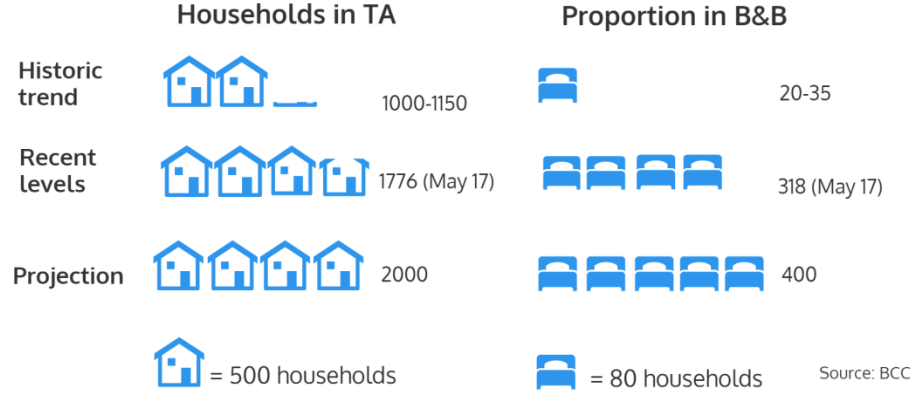
Source: Think Family Data Team (2017)



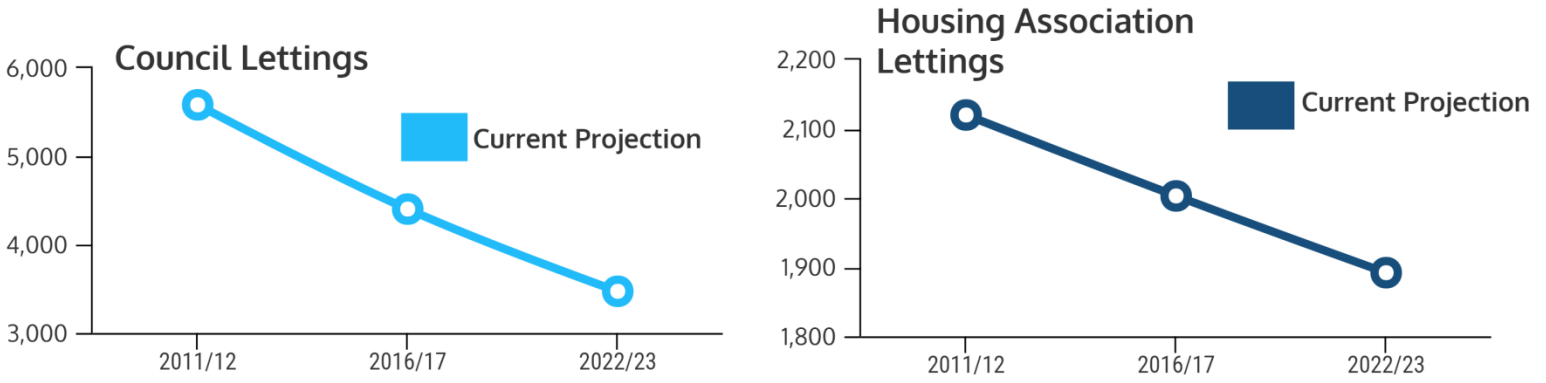
Housing Birmingham

A great place to live

Temporary Accommodation

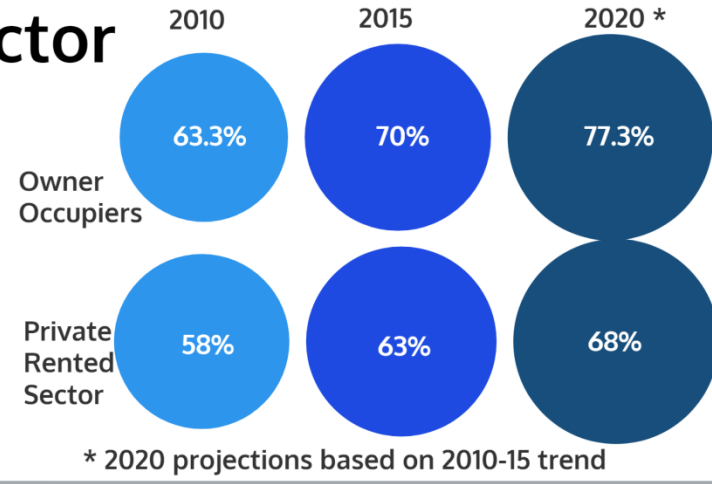


Social Housing Lettings

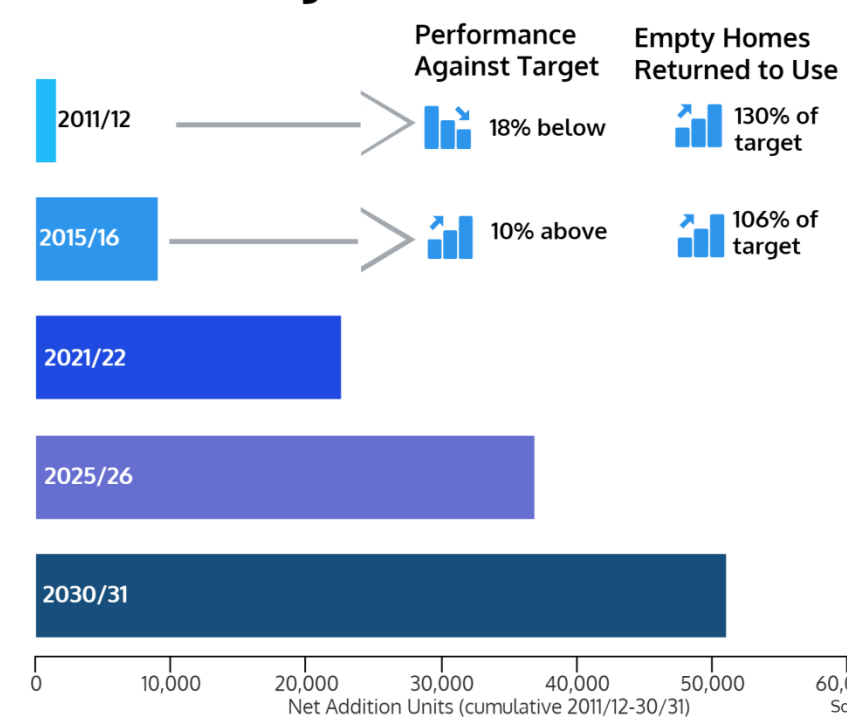


Private Sector Stock Condition

Decent Homes Rate in Birmingham

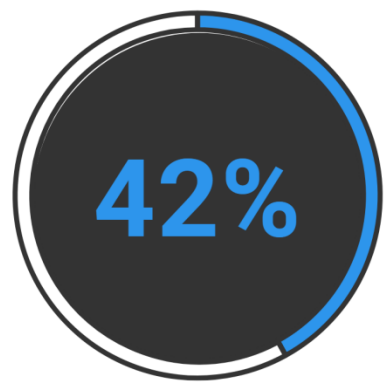


BDP Net Additional Homes in Birmingham Actual and Targets



House Building

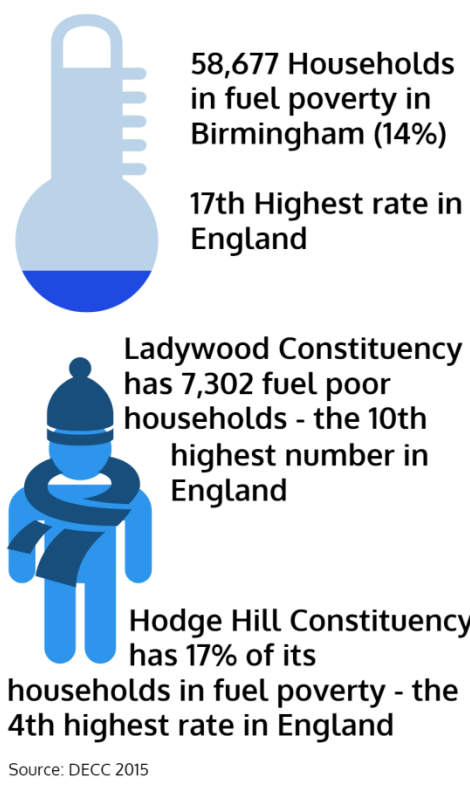
BDP Target Delivery Outside Birmingham by 2030/31



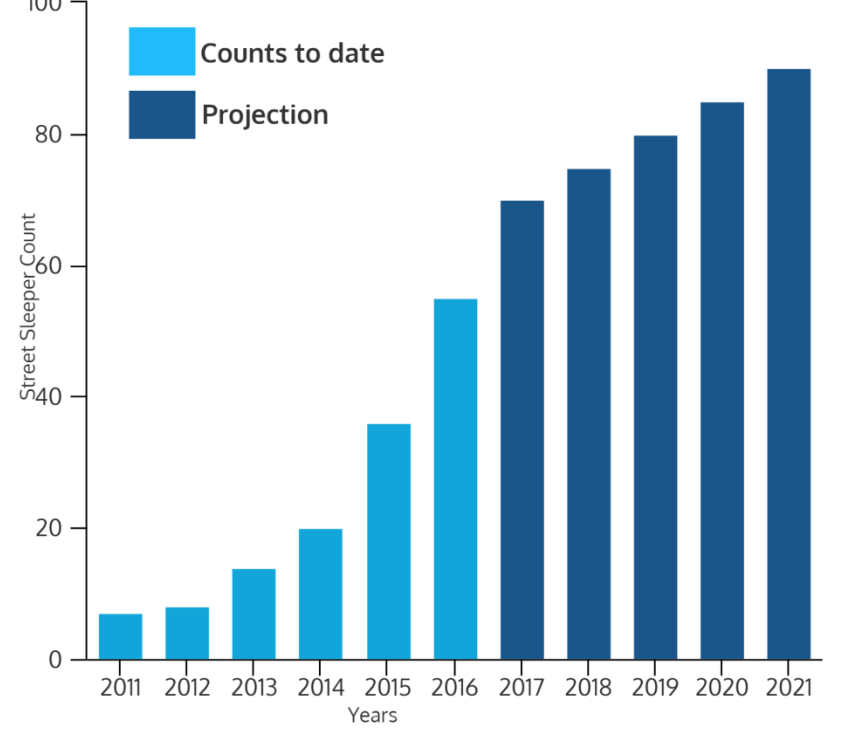
The % of homes that need to be delivered outside of Birmingham to meet the overall Housing Need for the city by 2030/31

Source: TP 29 in the BDP and SHLAAs 2012 to 2016

Fuel Poverty



Street Homeless



NEETs & Not Known (May 17)

NEET Not Known

B'ham 2.9% ↓ 6.5%

England 3.0% ↓ 3.0%

Jobs & Skills

Birmingham
a great place
to succeed in



Employment Land
96ha
Reservoir maintained

Development Targets



Office
745,000
sqm



Retail
350,000
sqm



Jobs Created
100,000

Unemployment



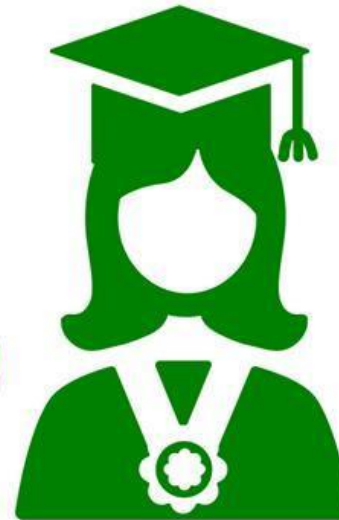
Birmingham 6.4%

UK 2.4%

Ward Gap 4.7 % Points

Skills (2016)

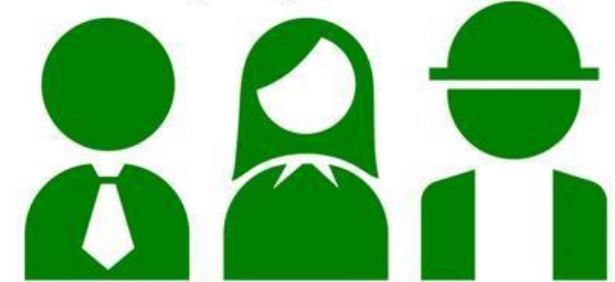
16-24 at least NVQ1



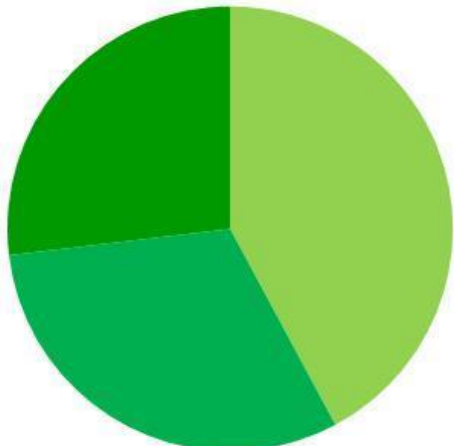
16-24 at least NVQ3



Employment Rate



Forecast Employment Growth



2015 to 2030

- Higher Skilled +41,700
- Intermediate +30,600
- Lower Skilled +26,600

Improved Digital Offer



76%

Broadband
(Households)



72%

Smartphones



89%

Use Internet

Source: Data Sources: Ofcom; DigitalRadish

BCC Apprenticeships

317 Target – March 2018



Top 5 Causes of Early Death in Birmingham*

Source: ONS deaths 2013 -15

*excluding infant mortality

1. Coronary Heart Disease
2. Lung Cancer
3. Alcoholic Liver Disease
4. Other Heart Disease
5. Chronic Obstructive Pulmonary Disease



Causes of the Causes

All 5 diseases have modifiable risk factors relating to lifestyle

Smoking	Alcohol	Inactivity	Obesity
1 in 2 lifelong smokers die from their addiction	Drinking high-risk levels of alcohol 13x increased risk of ALD	More than a third of adults in Birmingham are physically inactive	A quarter of 10-11 year olds in Birmingham are obese

Birmingham Public Health 2017

Birmingham Wellbeing



81% of people engaging in free activities provided by the Wellbeing Service are from the most deprived quintiles 1 & 2 (2016 -17)



Adult Participation

30 minutes, moderate intensity sport

Birmingham	30.2%
England	36.1%

Source: Sport England Active People Survey 10 (2016)

Health Birmingham

A great place to grow old in

Direct Payments



22% of eligible Clients have a Direct Payment

enabling people to have independent choice and control over their care

Source: Adults Intelligence and Analysis Team (2017)

Good Quality Standard of Care

(Service users living in a care home or receiving home support)



Council Plan Target: 72% Achieved: 65.1%

Source: Adults Intelligence and Analysis Team (2017)

Active Disabled People



In Birmingham **13.5%** of disabled people reportedly take part in sport or physical activity For recommended 30 minutes per week

Source: Sport England (2016)

Physical Activity

Demographic	Birmingham Inactive	National Inactive
Female	38.4%	31.5%
Male	24.9%	23.8%
White British	32.7%	27.5%
Black Minority Ethnic Groups	30.4%	28.0%
Limiting illness or disability	46.4%	50.0%
No limiting illness or disability	29.0%	23.2%
All people overall	32.7%	27.5%

Source: Sport England (Mid Jan 2014 – Mid Jan 2015)

Cycle Journeys



Monitoring system in place by 18/19 to gather cycling data

Source: Economy (Business Customer Support Team)

BCR - aiming to increase cycle trips 5% by 2023 and 10% by 2033

3,400 bikes to adults (BBB scheme - 2015/2016)

40,000 miles of car journeys replaced with cycle journeys

3,500 hours of reduced congestion on our roads, equating to 5000 KG of CO2 Emissions

BCR: Birmingham Cycle Revolution Source: Big Birmingham Bikes (BBB) (2017)

Care in the Community



69.4% of older adults received a service and were living in their own home over the last year - an increase of **1.5%** compared to younger adults **1%** (April 2017)

Source: Adults Intelligence and Analysis Team (2017)



Cleanliness in Birmingham Streets and Green Spaces
Percentage of land and highways with unacceptable levels of waste

Type	March 2017 Target	March 2017 Actual
Litter	5.0%	11.7%
Graffiti	7.0%	7.9%
Detritus	8.4%	12.3%
Fly Posting	1.0%	5.2%

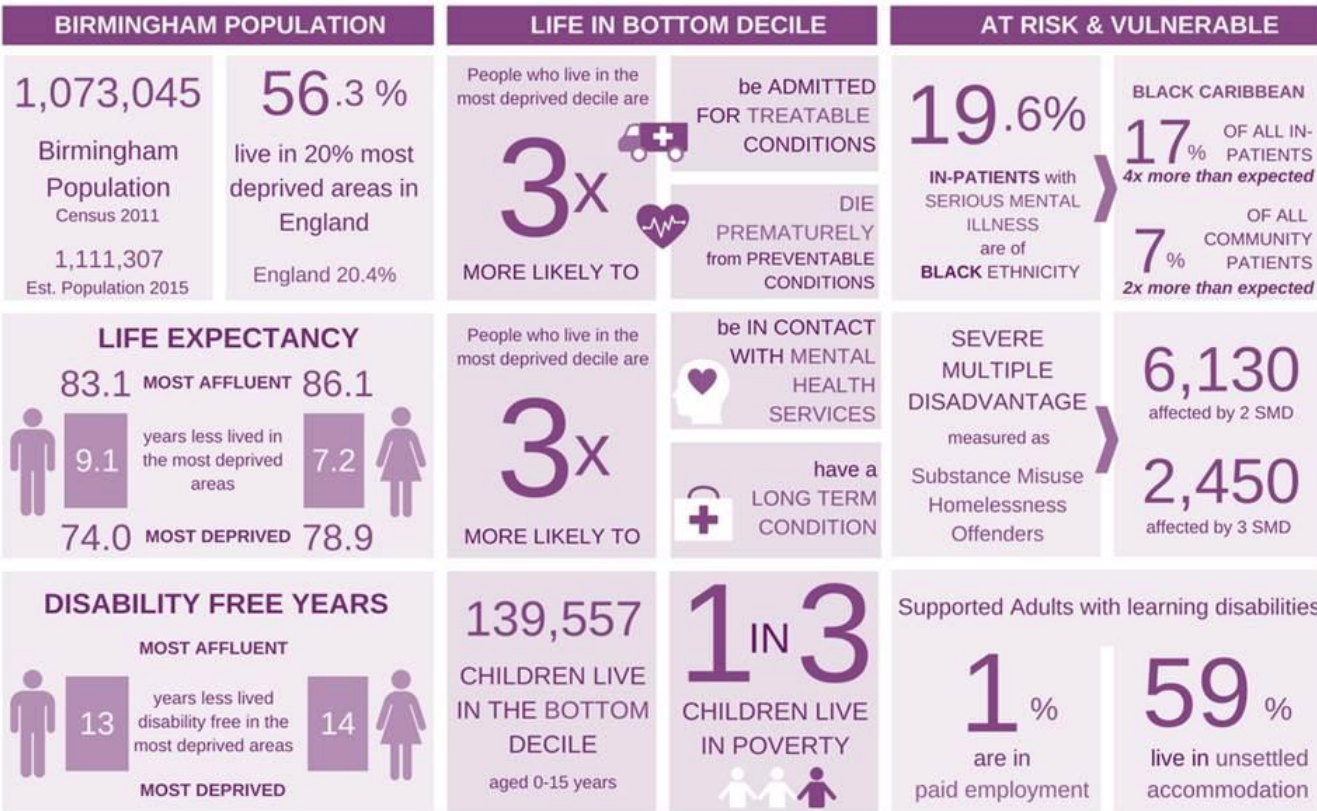
Performance is worse than the target across all types of waste

Source: Waste Management Performance Team (2017)

BIRMINGHAM

WORKING TOWARDS A HEALTHY CITY: HEALTH INEQUALITIES

Birmingham City Council
Public Health, August 2016
Not to be used without permission.
Numbers have been rounded



Data sourced from: population Census 2011 and Census population estimate 2015; life expectancy 2013-2015, Public Health Outcome Framework; Deprivation IMD index; and Exeter GP Registered population data; Poverty, Hard Edge Report; Graphics: Canva; The Noun Project

BIRMINGHAM

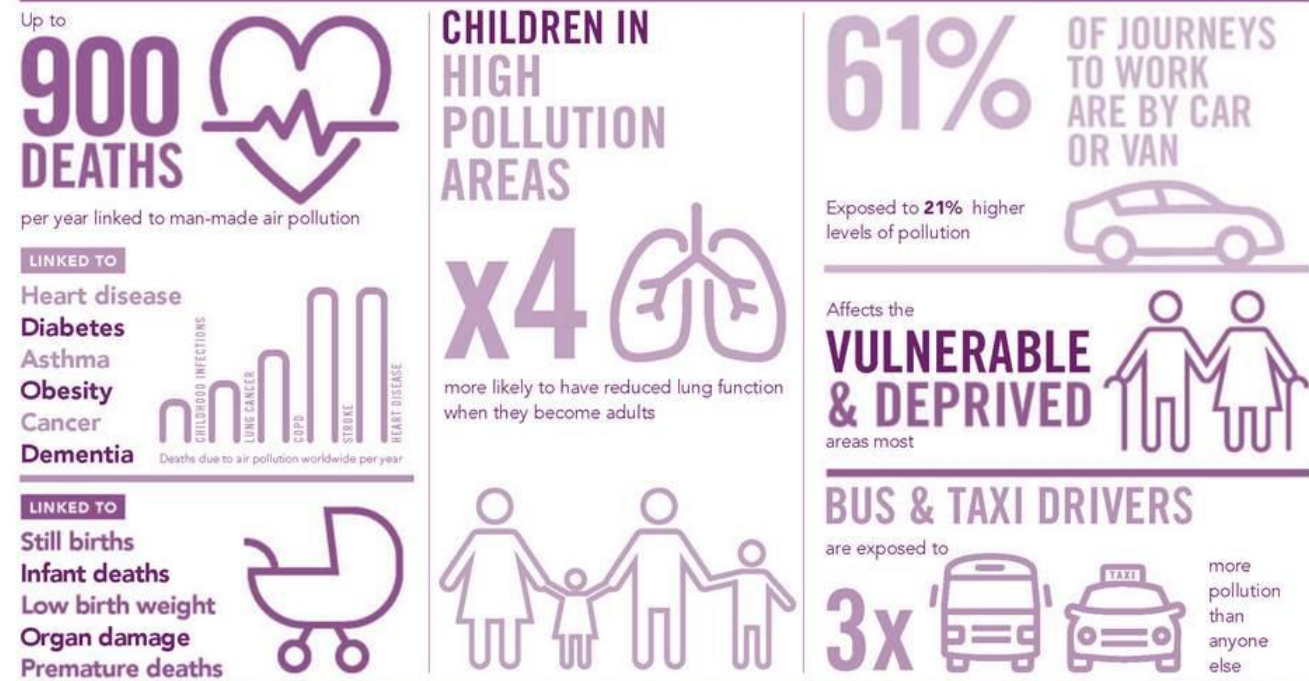
WORKING TOWARDS A HEALTHY CITY, HEALTHY PLACE

Birmingham City Council
Public Health, August 2016
Not to be used without permission.
Numbers have been rounded

ACTIVITY AND GREEN SPACE



EFFECTS OF AIR POLLUTION



#BrumBreathes

Birmingham City Council

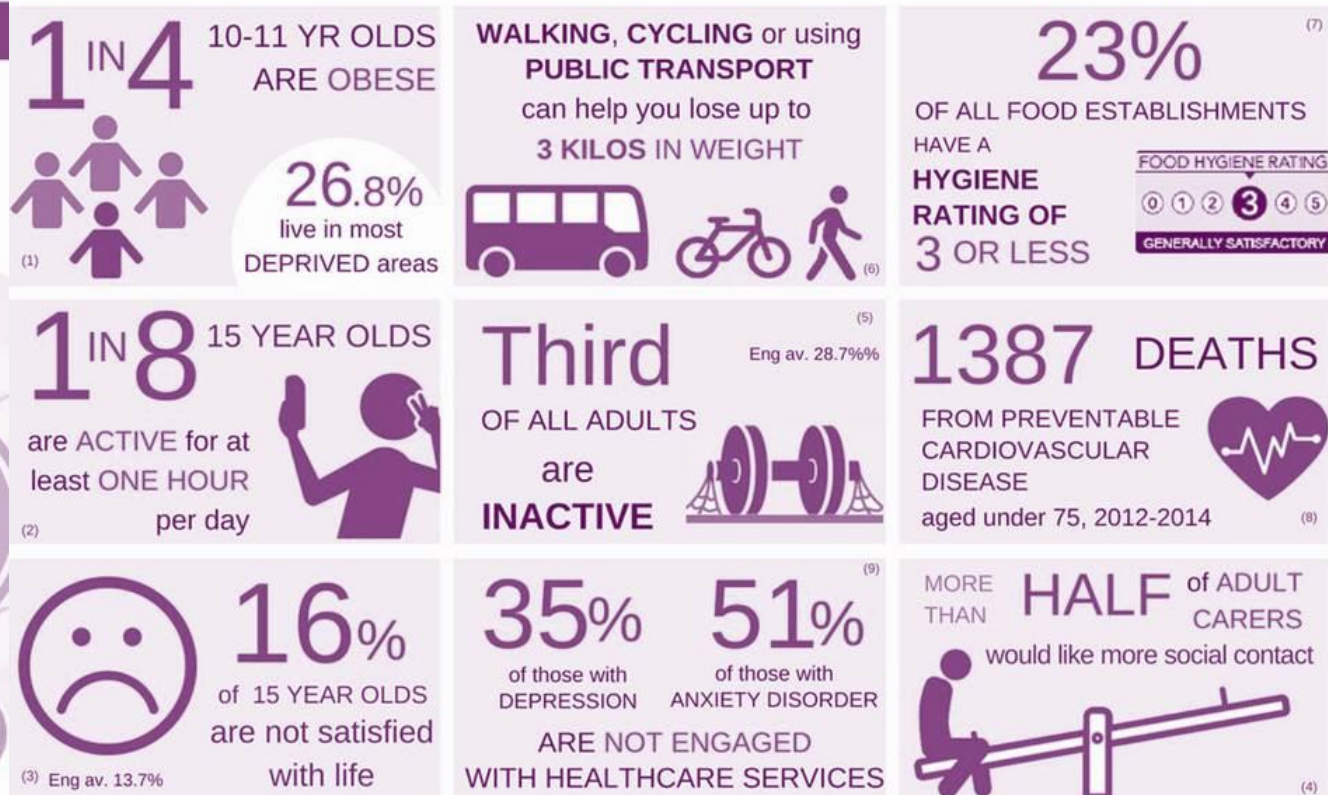
Numbers have been rounded. Evidence provided by Public Health Birmingham, May 2017; birminghampublichealth.co.uk

BIRMINGHAM

WORKING TOWARDS A HEALTHY CITY, HEALTHY PEOPLE

Birmingham City Council

Public Health, August 2016
Not to be used without permission.
Numbers have been rounded



Data sourced from: (1) National Child Measuring Programme 2014/15; (2) 12.3% Youth Survey of 15 yr olds 2014/15; (3) Youth Survey of 15 yr olds 2014/15; (4) 56.5% Public Health Outcome Framework 2014/15; (5) 36.2% Public Health Outcomes Framework 2015; (6) <http://www.independent.co.uk/life-style/health-and-families/health-news/take-public-transport-if-you-want-to-lose-weight-says-study-a6934941.html>; (7) Food Standards Agency Food ratings August 2016; (8) Public Health Outcome Framework over 3years 2012-2014; (9) MIND; Graphics: Canva; The Noun Project



Organisational Health



Internal Feedback

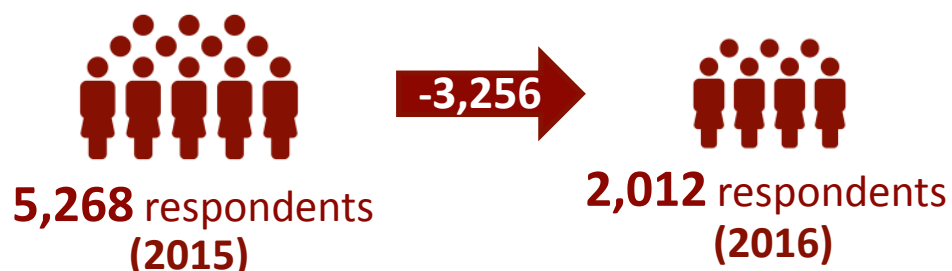
Staff Survey 2016



External Feedback

Resident Survey 2016/17

Participation



Participation



1,200 people interviewed across all wards from October 2016 – January 2017.

Engagement Index



49%
(-2%)



58%
(-3%)



Pride

Engagement with and pride in working for BCC has decreased since 2015.

Satisfaction with BCC

64% *(-1% change)*

Trusts BCC

70% *(+2% change)*

Keeps Residents Informed

58% *(-3% change)*



Public support to reduce delivery of services

16%
(-13% change)

Residents' involvement in, and perceived ability to influence, local decision making has decreased.

Involvement

7% *(-13% change)*



Influence

38% *(-9% change)*



42% trust the council and its senior managers.



26% confident in the Future Operating Model's success.