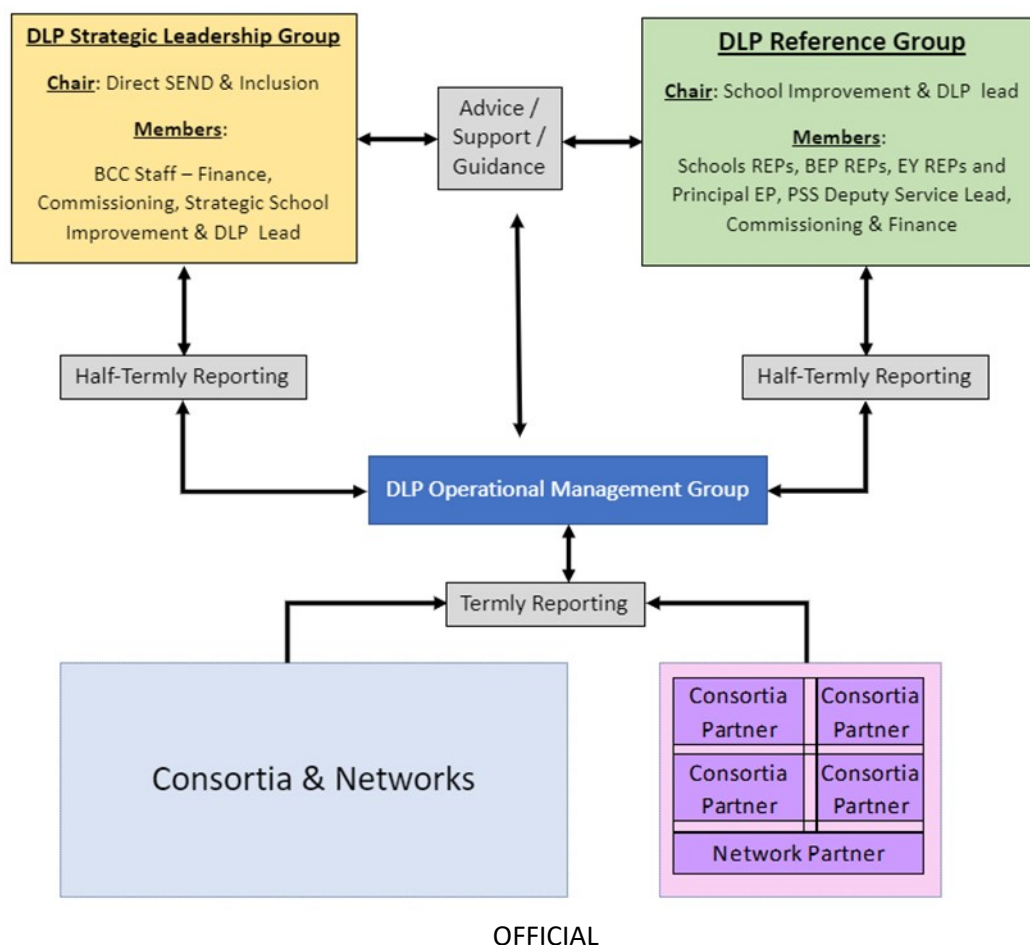


Developing Local Provision (DLP) Governance Phase 2

The Governance of the Mainstream DLP Project can be seen below.



The Structure

The Governance of the DLP Project works on Primary and Secondary families of schools. Each DLP Project has a designated project lead, whom is the point of contact for all project communications, queries, and discussions via the Operational Group. They are also responsible for sending in Project Termly Reports and being the conduit/representative of the Consortia/Network at project level.

The Operational Management Group

The Operational Group deals with the day to day running of the project, supports projects and project leads, *offers strategic direction*, and is held accountable by the Local Authority. The Operational Group is made up of the following members:

Position	Name
School Improvement Strategic Lead	Lisa Smith (BCC)
DLP project Manager	Olabisi Romeo
BCC Finance Team	School Finance

BCC Commissioning team	
------------------------	--

The Reference Group

The Reference Group is an advisory group that meets with both the Operational Group and Project leads on a termly basis. The group is instilled to provide professional recommendations, support, challenge, feedback and ensure the steering group is running the project as intended. The Reference Group is a collective of the below:

Position	Name
School Improvement Strategic Lead	Lisa Smith (BCC)
DLP Project Manager	Olabisi Romeo (BCC)
School Improvement Partners	Tim Boyes & Cath Keast (BEP)
Data Partner	Cath Keast (BEP)
Special School Representative	
Secondary Head Representative	Dave Clayton – King Edward VI King's Norton School for Boys
Secondary Head Representative	Jonathan Mortimor – Hamstead Hall
Primary Head Representative	Sarah Pecheur _ Wheelers Lane Primary
Primary Head Representative	Nick Lamorte – Wychall Primary
CAT, PSS Rep	Terri Cawser (BCC)
CAT, PSS Rep	Rebecca Hughes (BCC)
Educational Psychologist Representative	Pauline Bromfield (BCC)
Early Years DLP	Fiona Hicks (BCC)
Early Years DLP	Karen A Jones (BCC)
Early Years Setting	Michelle Howles – Norton hall Children and Family Centre
Early Years maintained	Claire Henebury – Garrett Green Nursery School & Enhanced Provision
Early Years Setting	Claire Fitzgerald – Child Minder

