

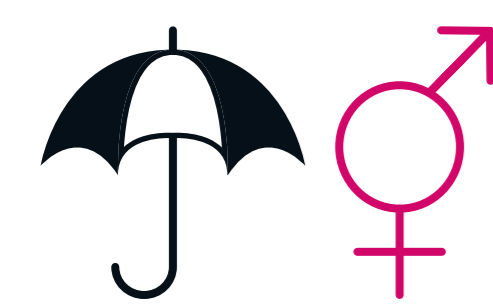
# BISEXUAL COMMUNITY HEALTH PROFILE



## SUMMARY OF KEY INEQUALITIES

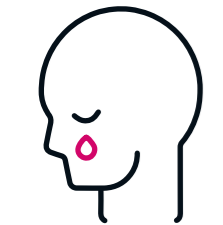
This infographic highlights some of the key findings from the Bisexual Community Health Profile as a starting point to understanding the health and wellbeing needs of the Bisexual community. To learn more, [read the full report](#).

## DEFINING THE POPULATION



**BISEXUAL** IS A UMBRELLA TERM USED TO DESCRIBE A ROMANTIC & OR SEXUAL ORIENTATION TOWARDS MORE THAN ONE GENDER

## GETTING THE BEST START IN LIFE



**2.1 TIMES HIGHER ODDS OF FUTURE SUICIDE RISK AMONGST BISEXUAL YOUNG PEOPLE (AGED 16 TO 25)** compared with lesbian and gay youth

## BINGE EATING BEHAVIOURS YOUNG PEOPLE (AGED 14 TO 16)



GENDER	PERCENTAGE
Bisexual & Lesbian	26%
Bisexual & Gay Boys	21%
Heterosexual Boys	3%
Heterosexual Girls	14%

## MENTAL HEALTH



**HIGHER RATES EXPERIENCING A MENTAL HEALTH CONDITION IN 2023** compared with any other sexual orientation



**A BOLDER HEALTHIER BIRMINGHAM**

## DRUG USE



**ILLCIT DRUG USE**  
37% BISEXUALS, 11% HETEROSEXUALS IN THE PREVIOUS YEAR

## ACTIVE AT EVERY AGE & ABILITY



PHYSICALLY ACTIVE POPULATIONS (150+ MINS PER WEEK)  
**59% BISEXUAL MEN - LEAST ACTIVE**  
**69% BISEXUAL WOMEN - MOST ACTIVE** of all sexual orientations and sex combinations

## HEALTHY & AFFORDABLE FOOD



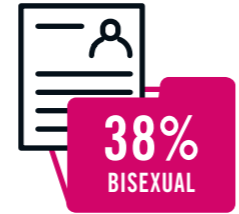
**LOWER RATES OF OVER WEIGHT & OBESITY**  
60% BISEXUAL MEN, 54% BISEXUAL WOMEN  
68% heterosexual men & 57% women

## DOMESTIC VIOLENCE



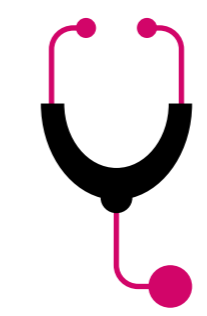
**25% BISEXUAL WOMEN EXPERIENCED DOMESTIC ABUSE VS. 7% HETEROSEXUAL WOMEN** in previous 12 months

## LIVING, WORKING & LEARNING WELL



**LEVEL 4 OR HIGHER QUALIFICATION UNIVERSITY DEGREE OR EQUIVALENT OBTAINED BY BISEXUALS IN BIRMINGHAM**

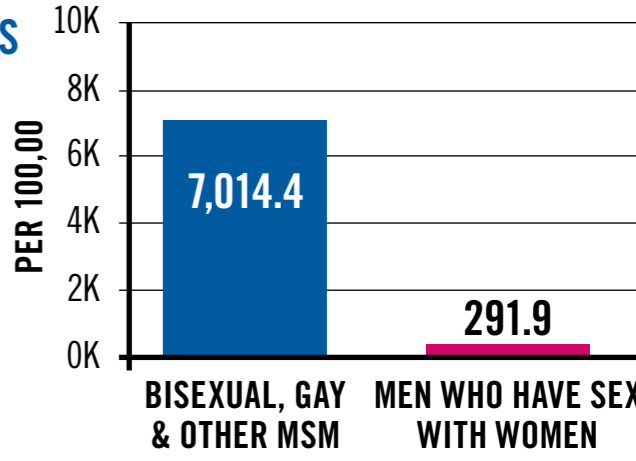
## PROTECT & DETECT



**ACCESSING SPECIALIST SEXUAL HEALTH SERVICES (SHSS) 65% OF MEN WHO HAVE SEX WITH OTHER MEN (MSM) HAD PrEP NEED IN 2021** compares to 1% of bisexual & heterosexual women

## BISEXUAL MEN AT HIGH RISK FROM SEXUALLY TRANSMITTED INFECTIONS (STIs)

NEW STI DIAGNOSIS IN ENGLAND 2021



## AGING & DYING WELL



**24% ISOLATION OR LONELINESS FEELINGS EXPERIENCED IN PREVIOUS 12 MONTHS** 8% heterosexuals

## CONTRIBUTING TO A GREEN & SUSTAINABLE FUTURE



**17% LIVE IN 15 THE MOST POLLUTED MSOAs IN BIRMINGHAM**  
There is limited data on the experiences of green spaces, and sustainable environments within the bisexual community

## WE WANT TO HEAR FROM YOU

Please share your feedback on this report and personal experiences by emailing [CommunitiesTeam@birmingham.gov.uk](mailto:CommunitiesTeam@birmingham.gov.uk)