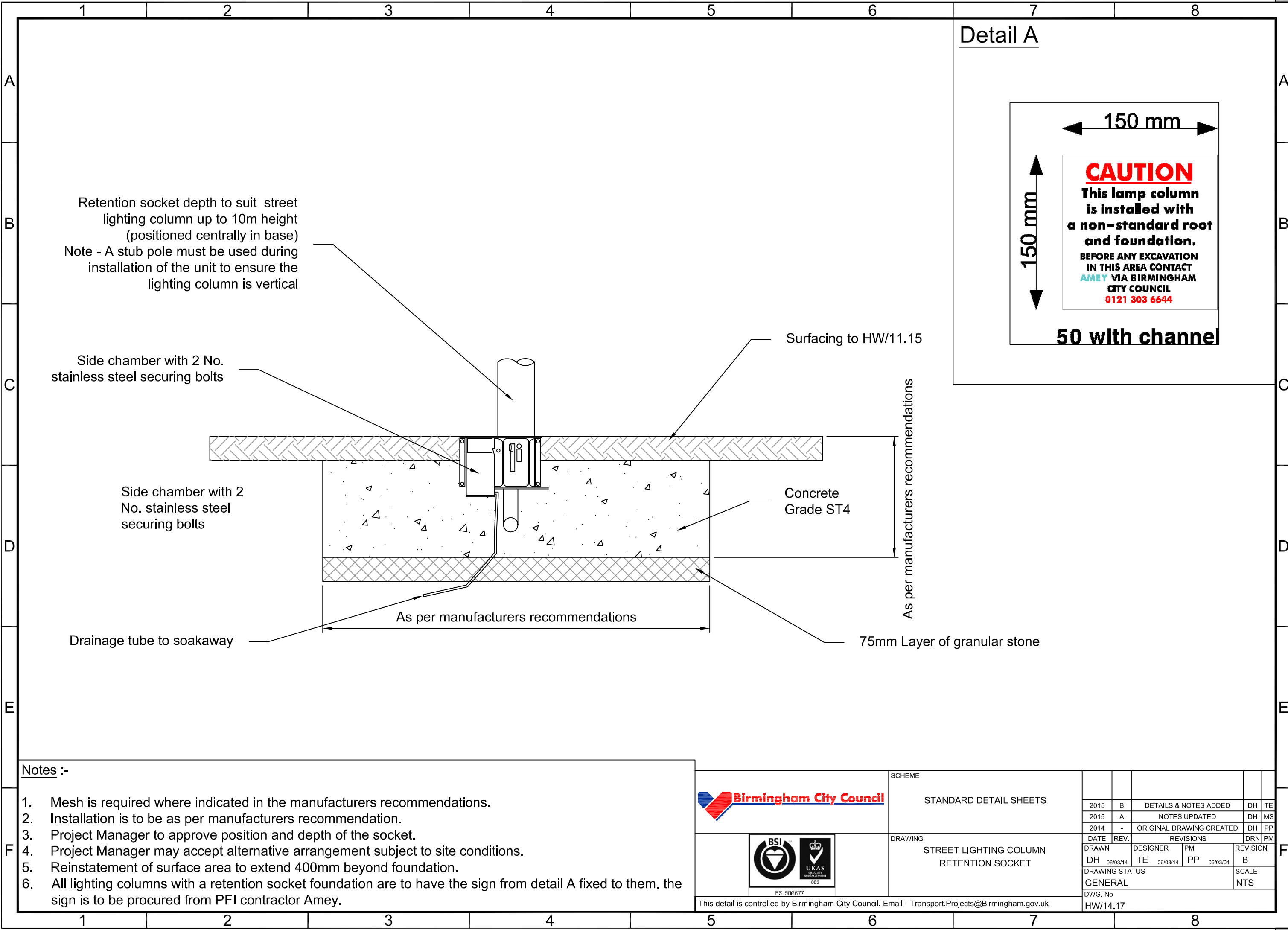


FILE PATH - X:\ACAD\dwg\stce\Standard Detail Drawings\Current\Series 1400\DWG\HW-14.17 Rev B Street Lighting Column Retention Socket.dwg



**Detail A**

← 150 mm →

↑ 150 mm ↓

**CAUTION**  
**This lamp column is installed with a non-standard root and foundation.**  
**BEFORE ANY EXCAVATION IN THIS AREA CONTACT**  
**AMEY VIA BIRMINGHAM CITY COUNCIL**  
**0121 303 6644**

**50 with channel**

Retention socket depth to suit street lighting column up to 10m height (positioned centrally in base)  
 Note - A stub pole must be used during installation of the unit to ensure the lighting column is vertical

Side chamber with 2 No. stainless steel securing bolts

Side chamber with 2 No. stainless steel securing bolts

Surfacing to HW/11.15

Concrete Grade ST4

As per manufacturers recommendations

As per manufacturers recommendations

Drainage tube to soakaway

75mm Layer of granular stone

- Notes :-**
1. Mesh is required where indicated in the manufacturers recommendations.
  2. Installation is to be as per manufacturers recommendation.
  3. Project Manager to approve position and depth of the socket.
  4. Project Manager may accept alternative arrangement subject to site conditions.
  5. Reinstatement of surface area to extend 400mm beyond foundation.
  6. All lighting columns with a retention socket foundation are to have the sign from detail A fixed to them. the sign is to be procured from PFI contractor Amey.

		SCHEME						
		STANDARD DETAIL SHEETS		2015	B	DETAILS & NOTES ADDED	DH	TE
		DRAWING		2015	A	NOTES UPDATED	DH	MS
		STREET LIGHTING COLUMN RETENTION SOCKET		2014	-	ORIGINAL DRAWING CREATED	DH	PP
This detail is controlled by Birmingham City Council. Email - Transport.Projects@Birmingham.gov.uk		DATE	REV.	REVISIONS		DRN	PM	
		DRAWN	DESIGNER	PM	REVISION			
		DH	TE	PP	B			
		DRAWING STATUS					SCALE	
		GENERAL					NTS	
		DWG. No						
		HW/14.17						

A3