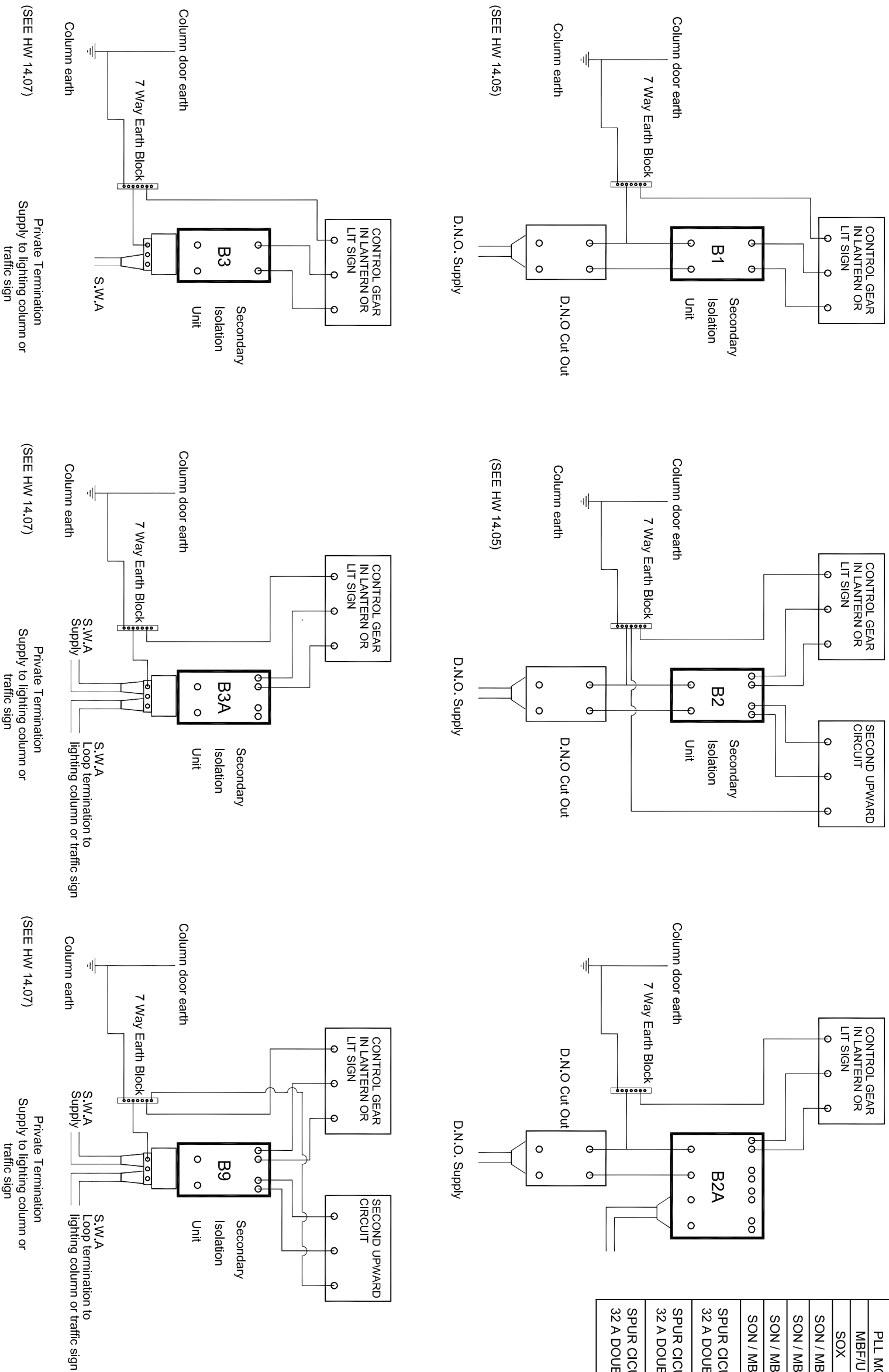


SCHEMATIC OF TYPICAL SUPPLY / WIRING ARRANGEMENTS



BS 88 FUSE RATINGS

LAMP TYPE	LAMP WATTAGE	FUSE RATING
PLL MCF	1 No. or 2 No. 11W or 20W	6 A
MBF/U	1 No. or 2 No. 80/125W	6 A
SOX	1 No. or 2 No. 35 - 180W	6 A
SON / MBI	1 No. or 2 No. 50 - 150W	6 A
SON / MBI	1 No. 250W	10 A
SON / MBI	1 No. 400W	16 A
SON / MBI	2 No. 250 - 400W	20 A

SPUR CIRCUIT TO LIGHTING COLUMN
32 A DOUBLE POLE SWITCH DISCONNECTOR & 16 A FUSE

SPUR CIRCUIT TO LIGHTING COLUMN 400W SON AND ABOVE
32 A DOUBLE POLE SWITCH DISCONNECTOR & 20 A FUSE

SPUR CIRCUIT TO TRAFFIC SIGN POLE
32 A DOUBLE POLE SWITCH DISCONNECTOR & 16 A FUSE

Notes :-

1. This drawing is to be read in conjunction with the Birmingham City Council specification and standard detail sheets HW/14.06, HW/14.07 & HW/14.08
2. All electrical equipment shall be located so as not to foul the column door fixing to the backboard.
3. All supplies to external equipment shall be protected with the appropriate fuse and the relevant column secondary isolation unit shall be fitted on both ends of the loop supply.



SCHEME
STANDARD DETAIL SHEETS



DRAWING
TYPICAL WIRING ARRANGEMENT
AND FUSE RATING

This detail is controlled by Birmingham City Council. Email - Transport.Projects@Birmingham.gov.uk

DATE	REV.	REVISIONS	DRN	PM	REVISION
2013	E	DETAILS & FRAME AMENDED	DH	PP	
2007	D	DETAILS & NOTES AMENDED	-	INT	
2003	C	DETAILS AMENDED	-	AJO	
2002	B	BORDER & TITLE AMENDED	-	AJC	
2001	A	DETAILS AMENDED	-	PNF	
2000	-	ORIGINAL DRAWING CREATED	PNF	AJO	

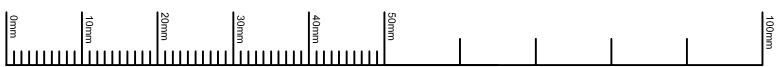
DATE REV. REVISIONS DRN PM REVISION

DRAWN DESIGNER PM PP

DH 03/12/13 TE 03/12/13 PP 03/12/13

DRAWING STATUS GENERAL

DWG. No HW/14.02



A3

1 2 3 4 5 6 7 8