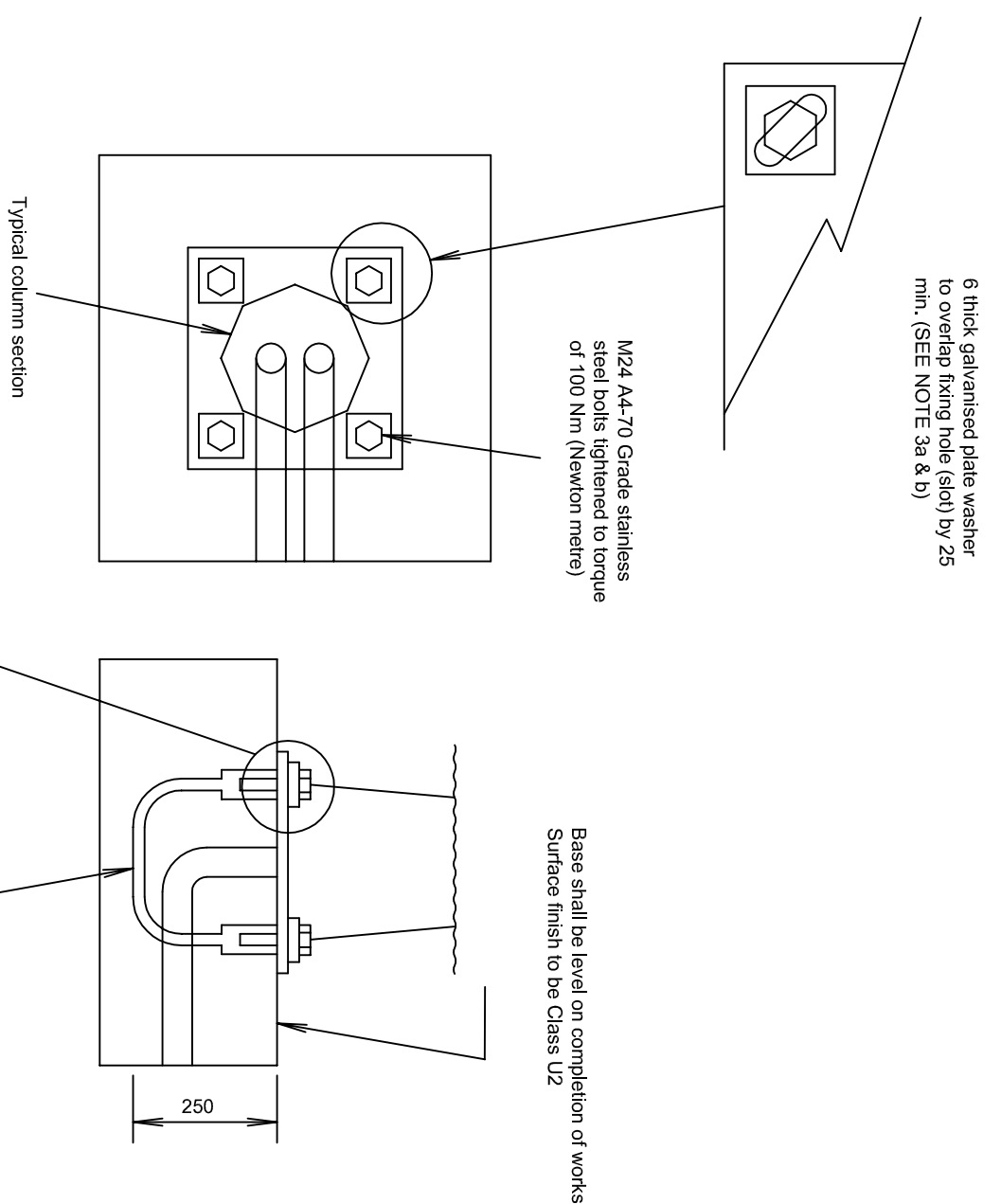


TABLE OF DIMENSIONS FOR FOUNDATIONS (SEE NOTE 6)

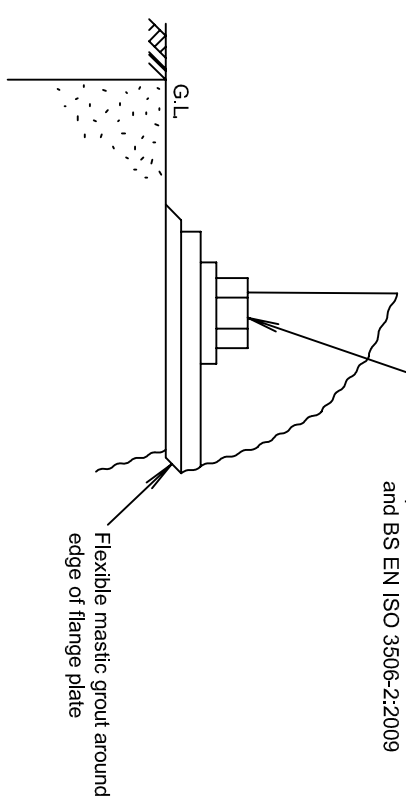
FOUNDATION TYPE	NOMINAL MOUNTING HEIGHT	DIMENSION 'A'	DIMENSION 'B'	DIMENSION 'C'
F01	5 metre	900	900	600
F02	6 metre	1000	1000	600
F03	8 metre	2000 1600 900	2000 1600 900	600 800 1500
F04	10 metre	2300 1800 1200	2300 1800 1200	600 900 1500
F05	12 metre	2700 2000 1600	2700 2000 1600	600 1000 1500

HIGHWAY WORKS DETAILS

- Notes :-
- All dimensions in millimetres unless otherwise stated.
 - Where a concrete base is to be provided in or adjacent to a filter drain a 1000 grade PVC sheet shall line the excavation prior to installing formwork.
 - a) Due account shall be taken of the washer thickness to ensure that bolt when tightened to 100 Nm will achieve performance figures specified by the manufacturer i.e. minimum thread penetration depth of 50 into socket.
 - b) Any movement of the anchorage and it will require immediate treatment.
 - This drawing does not apply to hinged (raise and lower) type columns above a 5 metre mounting height.
 - Concrete to be well compacted by vibration.
 - Dimensions tabled for foundations are for guidance only. The Contractor is responsible for designing the foundations suitable for the proposed lighting columns and for the ground conditions encountered.



DETAILS OF COLUMN ANCHORAGE AND ATTACHMENT SYSTEMS



SCHEME
STANDARD DETAIL SHEETS



DRAWING
INSULATION OF LIGHTING COLUMNS WITH FLANGE BASE PLATE

This detail is controlled by Birmingham City Council. Email - Transport.Projects@Birmingham.gov.uk

DATE	REV.	DESIGNER	PM	PP	REVISION
2013	C				DETAILS & FRAME AMENDED
2009	B				NOTES AMENDED
2008	A				NOTES AMENDED
2007	-				ORIGINAL DRAWING CREATED

DATE	REV.	DESIGNER	PM	PP	REVISION
03/12/13	TE	03/12/13			DRN PM
03/12/13	TE	03/12/13			DRN PM

GENERAL

DWG. No	SCALE
HW/13.09	NTS