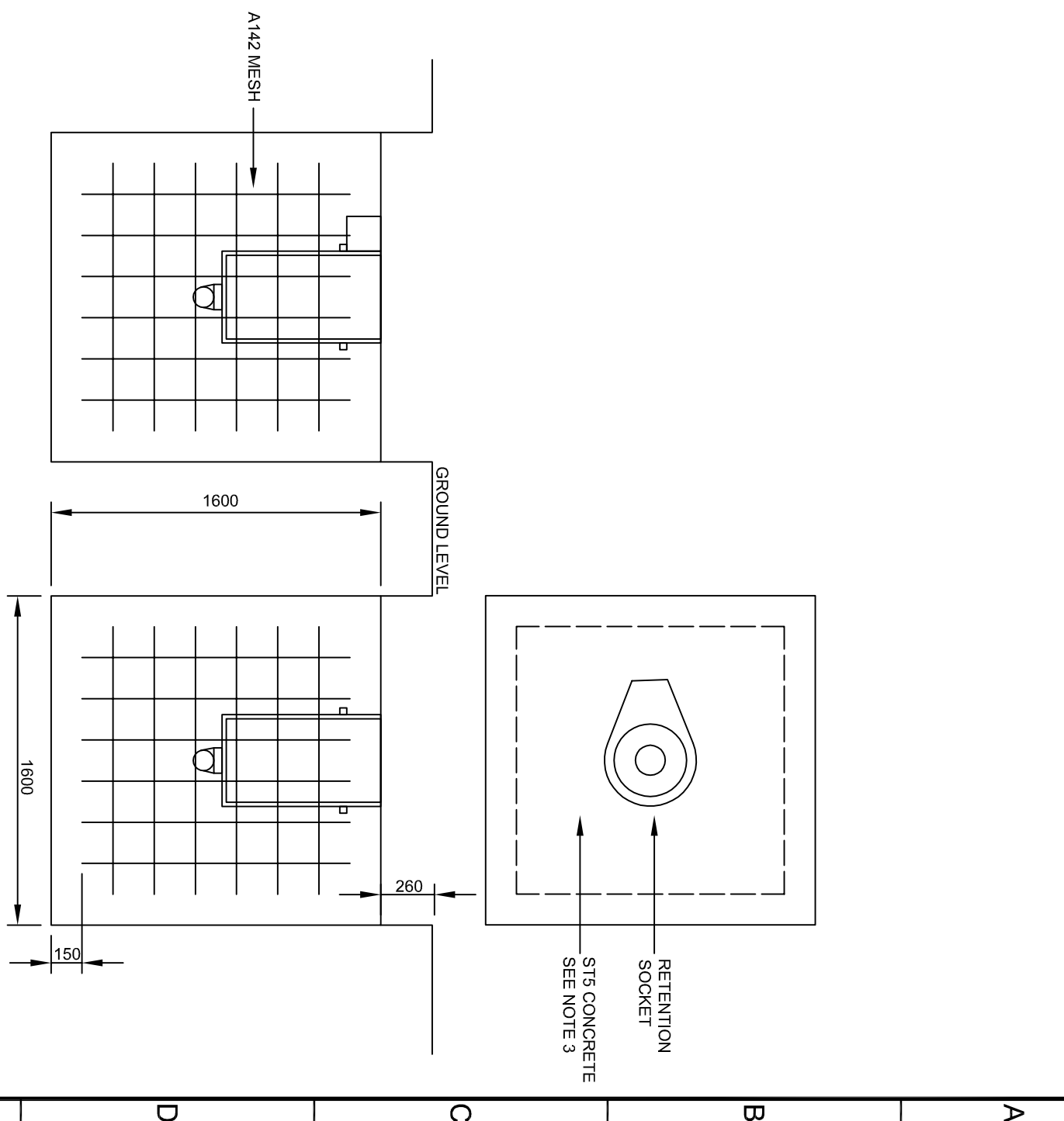


- Notes :-
1. Access doors on wide base poles must not face the carriageway.
  2. Before holes are drilled for pedestrian push button units Appendix 12/5 must be referred to.
  3. Contractor to confirm foundation is acceptable to the location it is to be installed. Design approval required before proceeding
  4. All dimensions are in millimetres.

FOUNDATION PAD DETAIL



SCHEME  
STANDARD DETAIL SHEETS



DRAWING  
10m MAST ARM  
DETAIL

This detail is controlled by Birmingham City Council. Email - Transport.Projects@Birmingham.gov.uk

DATE	REV.	ORIGINAL DRAWING CREATED	DATE	REV.	REVISIONS
2013	-				
DATE	DESIGNER	PM	DATE	DESIGNER	PM
DH 03/12/13	TE	PP	03/12/13	TE	PP

DATE	REV.	DRN	PM
2013	-		
DATE <th>REV.</th> <th>DRN</th> <th>PM</th>	REV.	DRN	PM
DH 03/12/13	TE	PP	03/12/13

DWG. No  
HW/12.65  
SCALE  
NTS