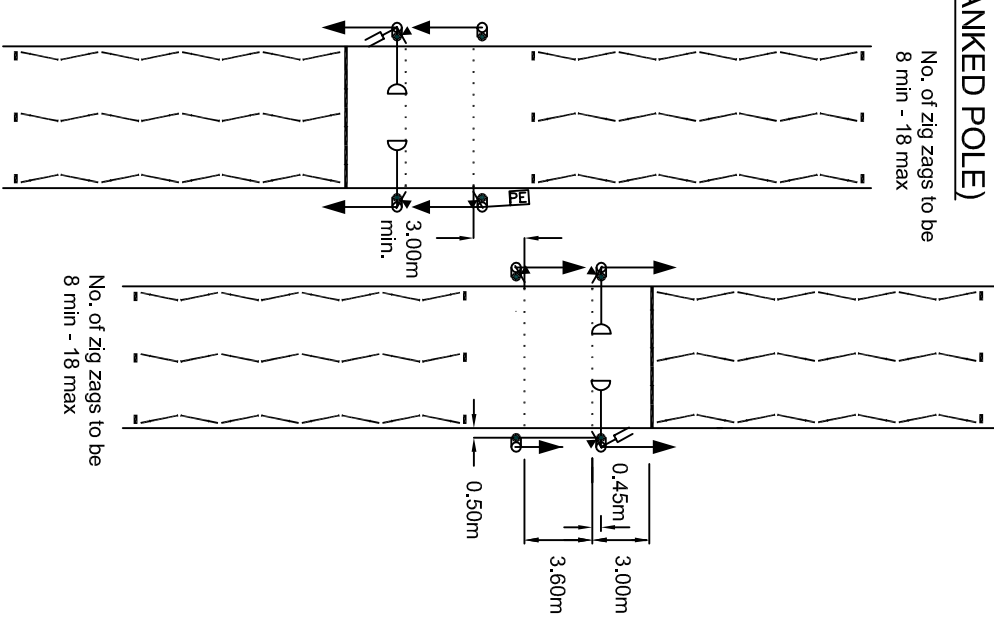
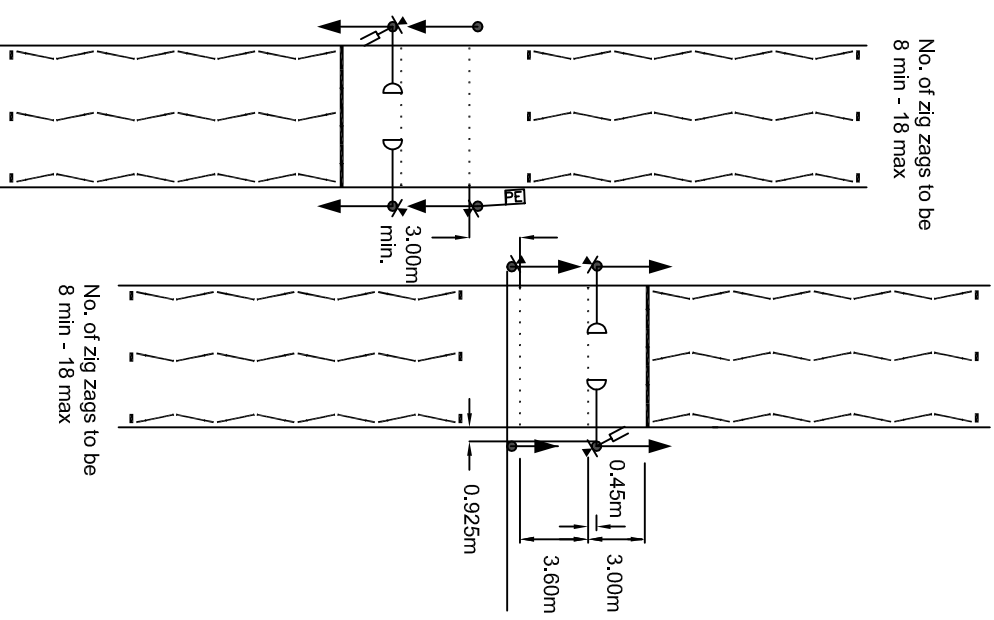


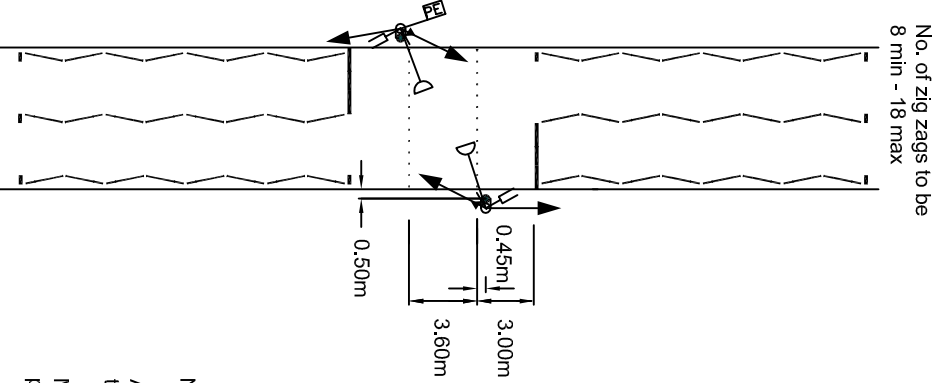
DUAL CARRIAGEWAY (SWAN NECK CRANKED POLE)



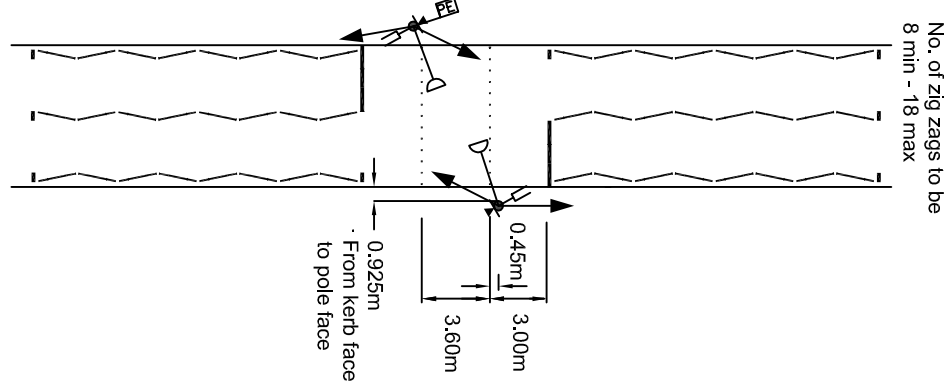
DUAL CARRIAGEWAY (STRAIGHT POLE)



SINGLE CARRIAGEWAY (SWAN NECK CRANKED POLE)



SINGLE CARRIAGEWAY (STRAIGHT POLE)



No. of zig zags to be 8 min - 18 max

All demand units should have audible and tactile indicators fitted.

MVD use is dependant on the 85th percentile speed.

Extra secondary posts may be introduced if required.

All demand units should have tactile indicators fitted.

MVD use is dependant on the 85th percentile speed.

No. of zig zags to be 8 min - 18 max

Key :-

- Fitted with shallow cowls
- Vehicle traffic approach detector
- Far sided pedestrian indicator
- Photo cell - to be positioned by the Project Manager
- Pedestrian push button and wait indicator
- Swan neck pole
- Straight pole

Notes :-

1. This detail is not to be used for new installations from October 2016 - refer to HW/12.51 for current pedestrian crossing requirements. This detail is for reference for existing installations only.
2. See also drawing HW/12.53 for pole and tactile paving setting out information.
3. Straight poles must be used unless otherwise agreed with the Project Manager.

Birmingham City Council



STANDARD DETAIL SHEETS



PELICAN CROSSING INSTALLATION

| | | | | |
|------|------|--------------------------|-----|-----|
| DATE | REV. | REVISIONS | DRN | PM |
| 2000 | - | ORIGINAL DRAWING CREATED | - | AJC |
| 2005 | E | NOTES AMENDED | - | BP |
| 2005 | D | DETAILS & NOTES AMENDED | - | AJC |
| 2003 | C | DETAILS AMENDED | - | JML |
| 2003 | B | DETAILS & NOTES AMENDED | - | AJC |
| 2002 | A | DETAILS & BORDER AMENDED | - | AJC |
| 2007 | F | DETAILS & NOTES AMENDED | PB | BP |
| 2005 | E | NOTES AMENDED | - | BP |
| DATE | REV. | REVISIONS | DRN | PM |
| 2017 | J | NOTE ADDED | DAM | TE |
| 2014 | I | DETAILS AMENDED | DH | PP |
| 2013 | H | DETAILS & FRAME AMENDED | DH | PP |
| 2010 | G | DETAILS & NOTES AMENDED | DH | TE |
| 2007 | F | DETAILS & NOTES AMENDED | PB | BP |
| 2005 | E | NOTES AMENDED | - | BP |
| 2005 | D | DETAILS & NOTES AMENDED | - | AJC |
| 2003 | C | DETAILS AMENDED | - | JML |
| 2003 | B | DETAILS & NOTES AMENDED | - | AJC |
| 2002 | A | DETAILS & BORDER AMENDED | - | AJC |
| 2000 | - | ORIGINAL DRAWING CREATED | - | AJC |
| DATE | REV. | REVISIONS | DRN | PM |
| 2017 | J | NOTE ADDED | DAM | TE |
| 2014 | I | DETAILS AMENDED | DH | PP |
| 2013 | H | DETAILS & FRAME AMENDED | DH | PP |
| 2010 | G | DETAILS & NOTES AMENDED | DH | TE |
| 2007 | F | DETAILS & NOTES AMENDED | PB | BP |
| 2005 | E | NOTES AMENDED | - | BP |
| 2005 | D | DETAILS & NOTES AMENDED | - | AJC |
| 2003 | C | DETAILS AMENDED | - | JML |
| 2003 | B | DETAILS & NOTES AMENDED | - | AJC |
| 2002 | A | DETAILS & BORDER AMENDED | - | AJC |
| 2000 | - | ORIGINAL DRAWING CREATED | - | AJC |
| DATE | REV. | REVISIONS | DRN | PM |
| 2017 | J | NOTE ADDED | DAM | TE |
| 2014 | I | DETAILS AMENDED | DH | PP |
| 2013 | H | DETAILS & FRAME AMENDED | DH | PP |
| 2010 | G | DETAILS & NOTES AMENDED | DH | TE |
| 2007 | F | DETAILS & NOTES AMENDED | PB | BP |
| 2005 | E | NOTES AMENDED | - | BP |
| 2005 | D | DETAILS & NOTES AMENDED | - | AJC |
| 2003 | C | DETAILS AMENDED | - | JML |
| 2003 | B | DETAILS & NOTES AMENDED | - | AJC |
| 2002 | A | DETAILS & BORDER AMENDED | - | AJC |
| 2000 | - | ORIGINAL DRAWING CREATED | - | AJC |
| DATE | REV. | REVISIONS | DRN | PM |
| 2017 | J | NOTE ADDED | DAM | TE |
| 2014 | I | DETAILS AMENDED | DH | PP |
| 2013 | H | DETAILS & FRAME AMENDED | DH | PP |
| 2010 | G | DETAILS & NOTES AMENDED | DH | TE |
| 2007 | F | DETAILS & NOTES AMENDED | PB | BP |
| 2005 | E | NOTES AMENDED | - | BP |
| 2005 | D | DETAILS & NOTES AMENDED | - | AJC |
| 2003 | C | DETAILS AMENDED | - | JML |
| 2003 | B | DETAILS & NOTES AMENDED | - | AJC |
| 2002 | A | DETAILS & BORDER AMENDED | - | AJC |
| 2000 | - | ORIGINAL DRAWING CREATED | - | AJC |
| DATE | REV. | REVISIONS | DRN | PM |
| 2017 | J | NOTE ADDED | DAM | TE |
| 2014 | I | DETAILS AMENDED | DH | PP |
| 2013 | H | DETAILS & FRAME AMENDED | DH | PP |
| 2010 | G | DETAILS & NOTES AMENDED | DH | TE |
| 2007 | F | DETAILS & NOTES AMENDED | PB | BP |
| 2005 | E | NOTES AMENDED | - | BP |
| 2005 | D | DETAILS & NOTES AMENDED | - | AJC |
| 2003 | C | DETAILS AMENDED | - | JML |
| 2003 | B | DETAILS & NOTES AMENDED | - | AJC |
| 2002 | A | DETAILS & BORDER AMENDED | - | AJC |
| 2000 | - | ORIGINAL DRAWING CREATED | - | AJC |
| DATE | REV. | REVISIONS | DRN | PM |
| 2017 | J | NOTE ADDED | DAM | TE |
| 2014 | I | DETAILS AMENDED | DH | PP |
| 2013 | H | DETAILS & FRAME AMENDED | DH | PP |
| 2010 | G | DETAILS & NOTES AMENDED | DH | TE |
| 2007 | F | DETAILS & NOTES AMENDED | PB | BP |
| 2005 | E | NOTES AMENDED | - | BP |
| 2005 | D | DETAILS & NOTES AMENDED | - | AJC |
| 2003 | C | DETAILS AMENDED | - | JML |
| 2003 | B | DETAILS & NOTES AMENDED | - | AJC |
| 2002 | A | DETAILS & BORDER AMENDED | - | AJC |
| 2000 | - | ORIGINAL DRAWING CREATED | - | AJC |
| DATE | REV. | REVISIONS | DRN | PM |
| 2017 | J | NOTE ADDED | DAM | TE |
| 2014 | I | DETAILS AMENDED | DH | PP |
| 2013 | H | DETAILS & FRAME AMENDED | DH | PP |
| 2010 | G | DETAILS & NOTES AMENDED | DH | TE |
| 2007 | F | DETAILS & NOTES AMENDED | PB | BP |
| 2005 | E | NOTES AMENDED | - | BP |
| 2005 | D | DETAILS & NOTES AMENDED | - | AJC |
| 2003 | C | DETAILS AMENDED | - | JML |
| 2003 | B | DETAILS & NOTES AMENDED | - | AJC |
| 2002 | A | DETAILS & BORDER AMENDED | - | AJC |
| 2000 | - | ORIGINAL DRAWING CREATED | - | AJC |
| DATE | REV. | REVISIONS | DRN | PM |
| 2017 | J | NOTE ADDED | DAM | TE |
| 2014 | I | DETAILS AMENDED | DH | PP |
| 2013 | H | DETAILS & FRAME AMENDED | DH | PP |
| 2010 | G | DETAILS & NOTES AMENDED | DH | TE |
| 2007 | F | DETAILS & NOTES AMENDED | PB | BP |
| 2005 | E | NOTES AMENDED | - | BP |
| 2005 | D | DETAILS & NOTES AMENDED | - | AJC |
| 2003 | C | DETAILS AMENDED | - | JML |
| 2003 | B | DETAILS & NOTES AMENDED | - | AJC |
| 2002 | A | DETAILS & BORDER AMENDED | - | AJC |
| 2000 | - | ORIGINAL DRAWING CREATED | - | AJC |
| DATE | REV. | REVISIONS | DRN | PM |
| 2017 | J | NOTE ADDED | DAM | TE |
| 2014 | I | DETAILS AMENDED | DH | PP |
| 2013 | H | DETAILS & FRAME AMENDED | DH | PP |
| 2010 | G | DETAILS & NOTES AMENDED | DH | TE |
| 2007 | F | DETAILS & NOTES AMENDED | PB | BP |
| 2005 | E | NOTES AMENDED | - | BP |
| 2005 | D | DETAILS & NOTES AMENDED | - | AJC |
| 2003 | C | DETAILS AMENDED | - | JML |
| 2003 | B | DETAILS & NOTES AMENDED | - | AJC |
| 2002 | A | DETAILS & BORDER AMENDED | - | AJC |
| 2000 | - | ORIGINAL DRAWING CREATED | - | AJC |
| DATE | REV. | REVISIONS | DRN | PM |
| 2017 | J | NOTE ADDED | DAM | TE |
| 2014 | I | DETAILS AMENDED | DH | PP |
| 2013 | H | DETAILS & FRAME AMENDED | DH | PP |
| 2010 | G | DETAILS & NOTES AMENDED | DH | TE |
| 2007 | F | DETAILS & NOTES AMENDED | PB | BP |
| 2005 | E | NOTES AMENDED | - | BP |
| 2005 | D | DETAILS & NOTES AMENDED | - | AJC |
| 2003 | C | DETAILS AMENDED | - | JML |
| 2003 | B | DETAILS & NOTES AMENDED | - | AJC |
| 2002 | A | DETAILS & BORDER AMENDED | - | AJC |
| 2000 | - | ORIGINAL DRAWING CREATED | - | AJC |
| DATE | REV. | REVISIONS | DRN | PM |
| 2017 | J | NOTE ADDED | DAM | TE |
| 2014 | I | DETAILS AMENDED | DH | PP |
| 2013 | H | DETAILS & FRAME AMENDED | DH | PP |
| 2010 | G | DETAILS & NOTES AMENDED | DH | TE |
| 2007 | F | DETAILS & NOTES AMENDED | PB | BP |
| 2005 | E | NOTES AMENDED | - | BP |
| 2005 | D | DETAILS & NOTES AMENDED | - | AJC |
| 2003 | C | DETAILS AMENDED | - | JML |
| 2003 | B | DETAILS & NOTES AMENDED | - | AJC |
| 2002 | A | DETAILS & BORDER AMENDED | - | AJC |
| 2000 | - | ORIGINAL DRAWING CREATED | - | AJC |
| DATE | REV. | REVISIONS | DRN | PM |
| 2017 | J | NOTE ADDED | DAM | TE |
| 2014 | I | DETAILS AMENDED | DH | PP |
| 2013 | H | DETAILS & FRAME AMENDED | DH | PP |
| 2010 | G | DETAILS & NOTES AMENDED | DH | TE |
| 2007 | F | DETAILS & NOTES AMENDED | PB | BP |
| 2005 | E | NOTES AMENDED | - | BP |
| 2005 | D | DETAILS & NOTES AMENDED | - | AJC |
| 2003 | C | DETAILS AMENDED | - | JML |
| 2003 | B | DETAILS & NOTES AMENDED | - | AJC |
| 2002 | A | DETAILS & BORDER AMENDED | - | AJC |
| 2000 | - | ORIGINAL DRAWING CREATED | - | AJC |
| DATE | REV. | REVISIONS | DRN | PM |
| 2017 | J | NOTE ADDED | DAM | TE |
| 2014 | I | DETAILS AMENDED | DH | PP |
| 2013 | H | DETAILS & FRAME AMENDED | DH | PP |
| 2010 | G | DETAILS & NOTES AMENDED | DH | TE |
| 2007 | F | DETAILS & NOTES AMENDED | PB | BP |
| 2005 | E | NOTES AMENDED | - | BP |
| 2005 | D | DETAILS & NOTES AMENDED | - | AJC |
| 2003 | C | DETAILS AMENDED | - | JML |
| 2003 | B | DETAILS & NOTES AMENDED | - | AJC |
| 2002 | A | DETAILS & BORDER AMENDED | - | AJC |
| 2000 | - | ORIGINAL DRAWING CREATED | - | AJC |
| DATE | REV. | REVISIONS | DRN | PM |
| 2017 | J | NOTE ADDED | DAM | TE |
| 2014 | I | DETAILS AMENDED | DH | PP |
| 2013 | H | DETAILS & FRAME AMENDED | DH | PP |
| 2010 | G | DETAILS & NOTES AMENDED | DH | TE |
| 2007 | F | DETAILS & NOTES AMENDED | PB | BP |
| 2005 | E | NOTES AMENDED | - | BP |
| 2005 | D | DETAILS & NOTES AMENDED | - | AJC |
| 2003 | C | DETAILS AMENDED | - | JML |
| 2003 | B | DETAILS & NOTES AMENDED | - | AJC |
| 2002 | A | DETAILS & BORDER AMENDED | - | AJC |
| 2000 | - | ORIGINAL DRAWING CREATED | - | AJC |
| DATE | REV. | REVISIONS | DRN | PM |
| 2017 | J | NOTE ADDED | DAM | TE |
| 2014 | I | DETAILS AMENDED | DH | PP |
| 2013 | H | DETAILS & FRAME AMENDED | DH | PP |
| 2010 | G | DETAILS & NOTES AMENDED | DH | TE |
| 2007 | F | DETAILS & NOTES AMENDED | PB | BP |
| 2005 | E | NOTES AMENDED | - | BP |
| 2005 | D | DETAILS & NOTES AMENDED | - | AJC |
| 2003 | C | DETAILS AMENDED | - | JML |
| 2003 | B | DETAILS & NOTES AMENDED | - | AJC |
| 2002 | A | DETAILS & BORDER AMENDED | - | AJC |
| 2000 | - | ORIGINAL DRAWING CREATED | - | AJC |
| DATE | REV. | REVISIONS | DRN | PM |
| 2017 | J | NOTE ADDED | DAM | TE |
| 2014 | I | DETAILS AMENDED | DH | PP |
| 2013 | H | DETAILS & FRAME AMENDED | DH | PP |
| 2010 | G | DETAILS & NOTES AMENDED | DH | TE |
| 2007 | F | DETAILS & NOTES AMENDED | PB | BP |
| 2005 | E | NOTES AMENDED | - | BP |
| 2005 | D | DETAILS & NOTES AMENDED | - | AJC |
| 2003 | C | DETAILS AMENDED | - | JML |
| 2003 | B | DETAILS & NOTES AMENDED | - | AJC |
| 2002 | A | DETAILS & BORDER AMENDED | - | AJC |
| 2000 | - | ORIGINAL DRAWING CREATED | - | AJC |
| DATE | REV. | REVISIONS | DRN | PM |
| 2017 | J | NOTE ADDED | DAM | TE |
| 2014 | I | DETAILS AMENDED | DH | PP |
| 2013 | H | DETAILS & FRAME AMENDED | DH | PP |
| 2010 | G | DETAILS & NOTES AMENDED | DH | TE |
| 2007 | F | DETAILS & NOTES AMENDED | PB | BP |
| 2005 | E | NOTES AMENDED | - | BP |
| 2005 | D | DETAILS & NOTES AMENDED | - | AJC |
| 2003 | C | DETAILS AMENDED | - | JML |
| 2003 | B | DETAILS & NOTES AMENDED | - | AJC |
| 2002 | A | DETAILS & BORDER AMENDED | - | AJC |
| 2000 | - | ORIGINAL DRAWING CREATED | - | AJC |
| DATE | REV. | REVISIONS | DRN | PM |
| 2017 | J | NOTE ADDED | DAM | TE |
| 2014 | I | DETAILS AMENDED | DH | PP |
| 2013 | H | DETAILS & FRAME AMENDED | DH | PP |
| 2010 | G | DETAILS & | | |