

**115X215MM RETENTION SOCKET SYSTEM  
FOR SHALLOW MOUNTING**

**115X600MM RETENTION SOCKET SYSTEM  
WITH DUCKFOOT BEND**

**115X700MM RETENTION SOCKET SYSTEM  
WITH DUCKFOOT BEND**

**115X740MM RETENTION SOCKET SYSTEM  
WITH DUCKFOOT BEND**

**Notes :-**

1. Contractor to submit details for the proposed retention socket prior to ordering any material for Project Manager approval.
2. Concrete for foundations to be grade ST4.
3. Refer to manufacturer's instructions for foundation requirements. Any adjustment to foundations to be agreed with the Project Manager.
4. The design to allow flexibility to adjust height.
5. Retention sockets in soft landscaping to be installed with a 450mm x 450mm concreted surround, 150mm deep ST4 with brushed concrete finish and wood trim containment.



SCHEME  
STANDARD DETAIL SHEETS

DRAWING  
SIGNAL POLE  
RETENTION SOCKETS

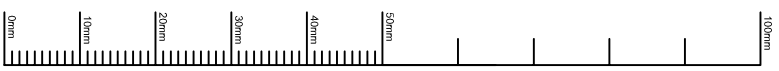
This detail is controlled by Birmingham City Council. Email - Transport.Projects@Birmingham.gov.uk

DATE	REV.	DESIGNER	PM	REVISION
2016	C			NOTE ADDED
2013	B			DETAILS & FRAME AMENDED
2005	A			NOTES AMENDED
2000	-			ORIGINAL DRAWING CREATED

DRAWN	DESIGNER	PM	REVISION
DH	TE	PP	C

GENERAL  
DRAWING STATUS  
SCALE  
NTS



1 2 3 4 5 6 7 8

F E D C B A