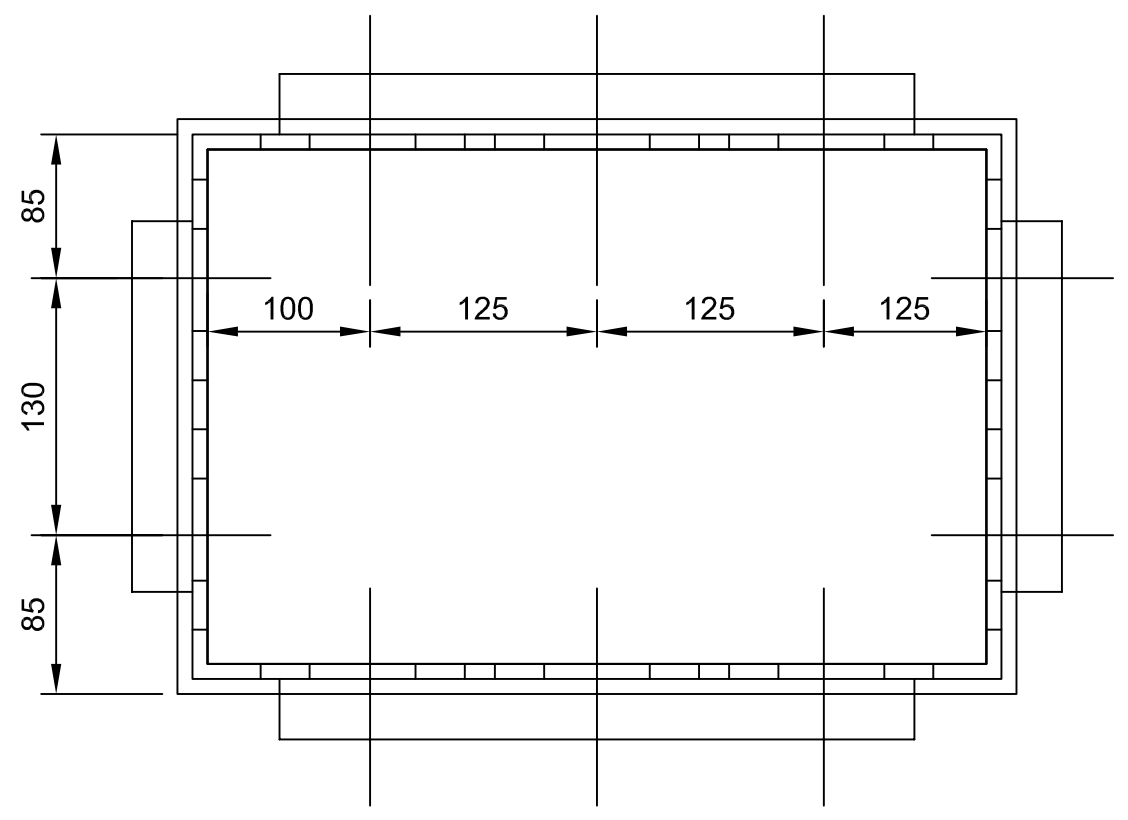
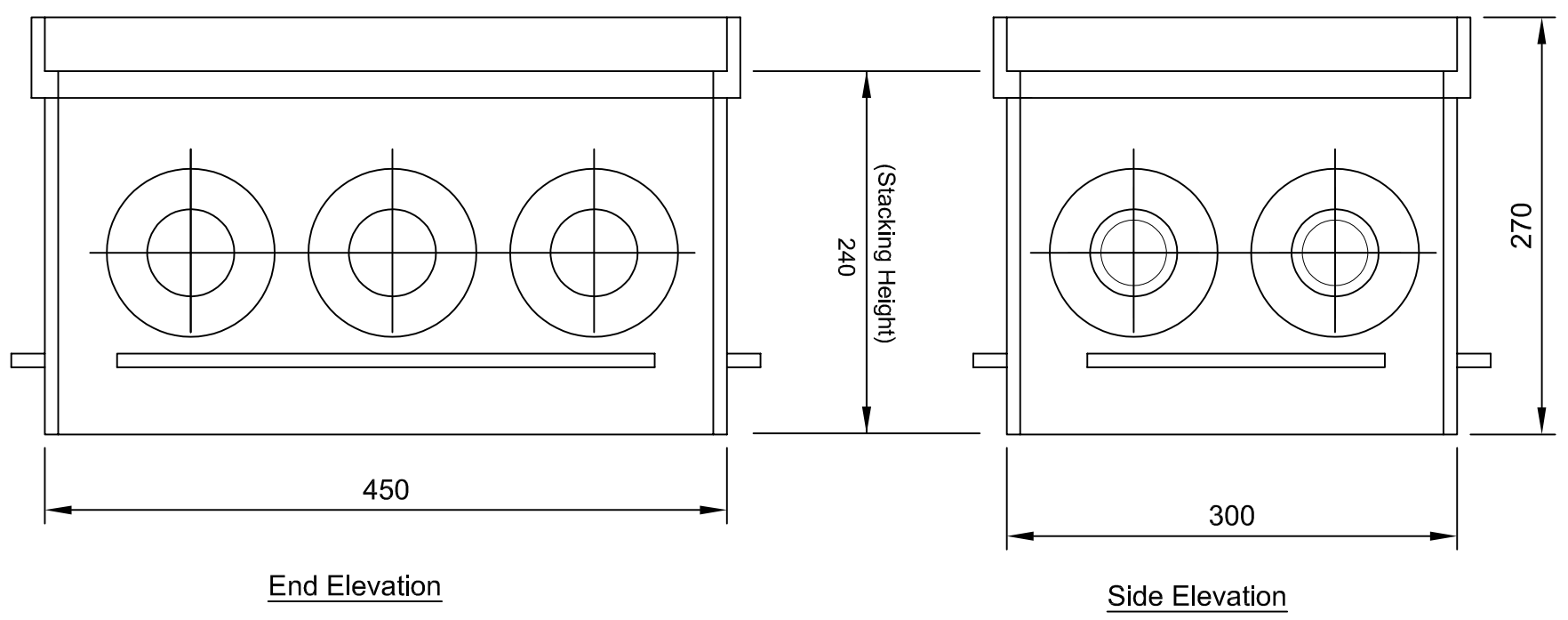


FILE PATH - X:\ACAD\dwg\tce\Standard Detail Drawings\Current\Series 1200\dwg\HW-12.56 Rev E Typical Detail for Access Box.dwg

100mm
50mm
40mm
30mm
20mm
10mm
0mm

A3




ACCESS SECTION ACC B3 (450x300mm)

STANDARD SIZES
Access Sections

Size (mm) Overall Wall	Openings Per Side	Depth (mm) Stacking
254 x 254	1 x 1	240
290 x 275	1 x 1	240
300 x 450	2 x 3	240
450 x 450	3 x 3	240
450 x 600	3 x 4	240
450 x 930	3 x 6	240
600 x 600	4 x 4	240
450 x 450	4 x 4	360


- Notes :-
- Duct boxes within soft verges to have 200x100x50mm natural concrete block surround on 100mm of ST4, refer to Standard Detail Sheet HW/11.53 for paving details.
 - Upon completion of the construction of a signal duct access chamber box, no cabling is to be installed until the chamber has been offered to the Project Manager for inspection and the relevant Quality Management paperwork completed and signed off by the Supervisor.



Birmingham
City Council

SCHEME

STANDARD DETAIL SHEETS



bsi. ISO 9001
Quality Management

DRAWING

TYPICAL DETAIL FOR
ACCESS CHAMBER

2018	E	NOTE ADDED		DAM	TE
2016	D	DETAILS & FRAME AMENDED		DAM	TE
2013	C	DETAILS & FRAME AMENDED		DH	PP
2005	B	DETAILS AMENDED		-	AJC
2002	A	BORDER & TITLE AMENDED		-	AJC
2000	-	ORIGINAL DRAWING CREATED		SRE	AJC
DATE	REV.	REVISIONS		DRN	PM
DRAWN	DESIGNER	PM	REVISION		
DH 03/12/13	TE 03/12/13	PP 03/12/13	E		
DRAWING STATUS				SCALE	
GENERAL				NTS	
DWG. No					
HW/12.56					

This detail is controlled by Birmingham City Council. Email - Transport.Projects@Birmingham.gov.uk