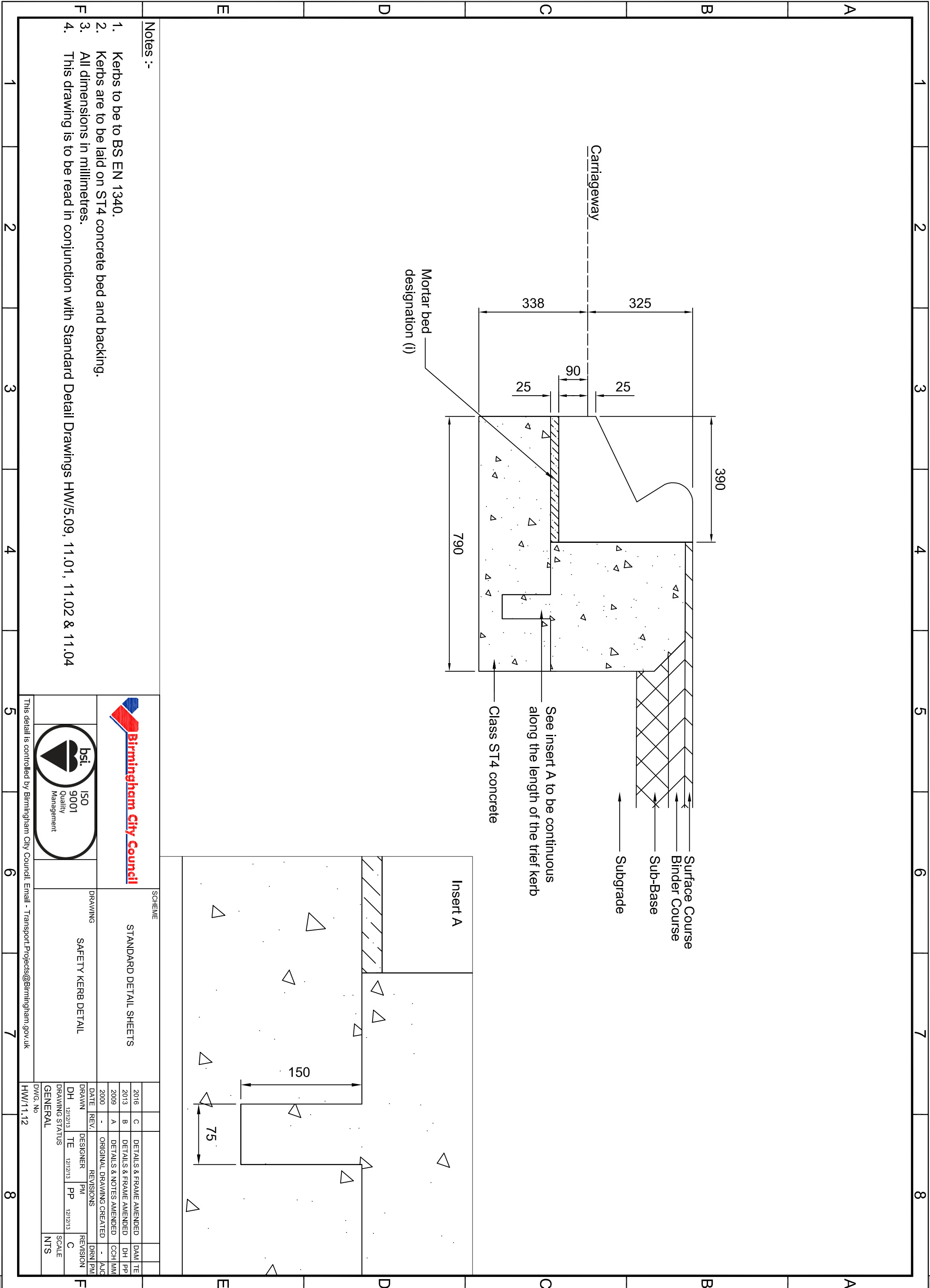


A3



Notes :-

1. Kerbs to be to BS EN 1340.
2. Kerbs are to be laid on ST4 concrete bed and backing.
3. All dimensions in millimetres.
4. This drawing is to be read in conjunction with Standard Detail Drawings HW/5.09, 11.01, 11.02 & 11.04



SCHEME

STANDARD DETAIL SHEETS

SAFETY KERB DETAIL

This detail is controlled by Birmingham City Council. Email - Transport.Projects@Birmingham.gov.uk

DATE	REV.	DESIGNER	PM	DRN	REVISION
2016	C	TE	PP	DRN	TE
2013	B	TE	PP	DRN	TE
2009	A	TE	PP	DRN	TE
2000	-	TE	PP	DRN	TE

GENERAL

DWG. No
HW/11.12