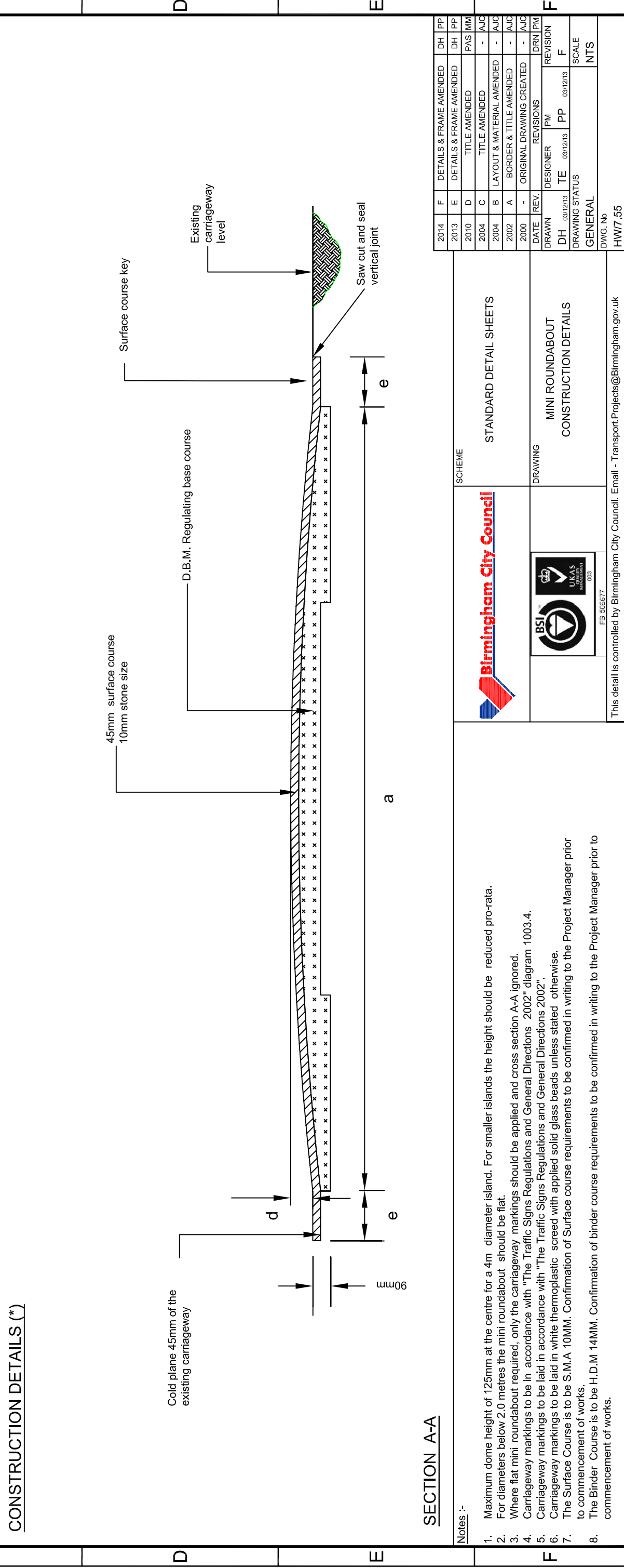


ROAD MARKINGS DETAILS

	a (mm)	b (mm)	c (mm)	d (mm)	e (mm)
Option 1	1000 min 2400 max	3025	3500 min 7000 max	flat (**) 75 max	300
Option 2	2500 min 4000 max	4450	5000 min 10000 max	75 min 125 max	300

(*): See note No.3
(**): See note No.2

CONSTRUCTION DETAILS (*)



SECTION A-A

Notes :-

- Maximum dome height of 125mm at the centre for a 4m diameter island. For smaller islands the height should be reduced pro-rata.
- For diameters below 2.0 metres the mini roundabout should be flat.
- Where flat mini roundabout required, only the carriageway markings should be applied and cross section A-A ignored.
- Carriageway markings to be in accordance with "The Traffic Signs Regulations and General Directions 2002" diagram 1003.4.
- Carriageway markings to be laid in accordance with "The Traffic Signs Regulations and General Directions 2002".
- Carriageway markings to be laid in white thermoplastic screed with applied solid glass beads unless stated otherwise.
- The Surface Course is to be S.M.A 10MM. Confirmation of Surface course requirements to be confirmed in writing to the Project Manager prior to commencement of works.
- The Binder Course is to be H.D.M 14MM. Confirmation of binder course requirements to be confirmed in writing to the Project Manager prior to commencement of works.



SCHEME
STANDARD DETAIL SHEETS

DRAWING
MINI ROUNDABOUT
CONSTRUCTION DETAILS

DATE	REV.	REVISIONS	DESIGNER	PP	DRN/PM
2014	F	DETAILS & FRAME AMENDED	DH	PP	
2013	E	DETAILS & FRAME AMENDED	DH	PP	
2010	D	TITLE AMENDED	PAS	MM	
2004	C	TITLE AMENDED	-	AJC	
2004	B	LAYOUT & MATERIAL AMENDED	-	AJC	
2002	A	BORDER & TITLE AMENDED	-	AJC	
2000	-	ORIGINAL DRAWING CREATED	-	AJC	

DATE	REV.	REVISIONS	DESIGNER	PP	DRN/PM
DH	03/12/13	TE	PP	03/12/13	F
DRAWING STATUS					SCALE
GENERAL					NTS

DWG. No
HW/7.55