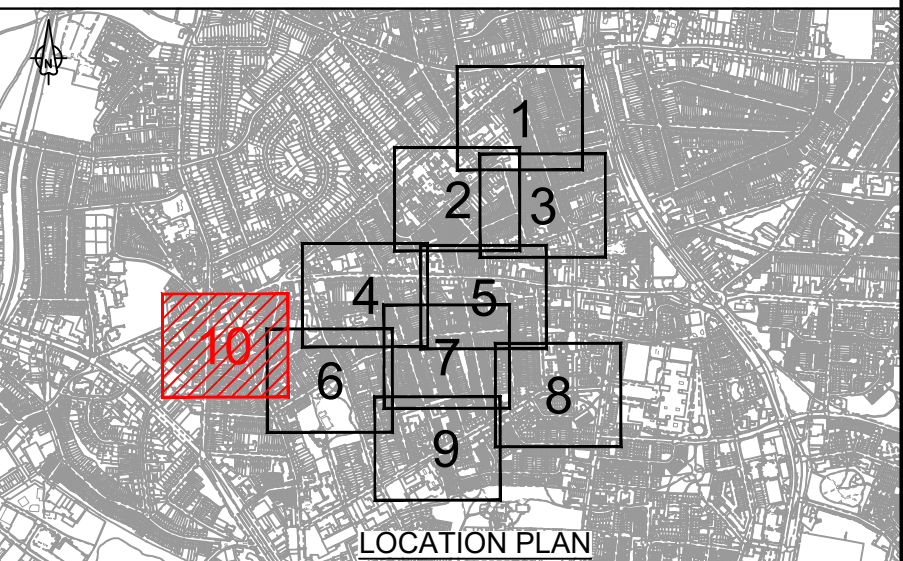


- Notes:
1. All dimensions in metres unless stated otherwise.
 2. Drawings to be printed in colour to enable correct viewing of symbols.
 3. Do not scale from this drawing.
 4. Drawing to be read in conjunction with all other Lozells drawings and documents.
 5. All works are to be in accordance with Birmingham City Council Standard Details.
 6. The Contractor is to conduct their own investigations prior to excavation.

- Key:
- Boundaries of Site
 - Proposed Non-Illuminated Traffic Sign on new Post
 - Proposed Non-Illuminated Traffic Signs back to back on new post
 - Proposed Non-Illuminated Traffic Signs on Lighting Column
 - Proposed Non-Illuminated Traffic Sign on existing Post
 - Proposed Non-Illuminated Traffic Signs back to back on existing post
 - Proposed Non-Illuminated Traffic Sign and relocated signs on new Post
 - Proposed Illuminated Traffic Sign on new Post
 - Proposed Illuminated Traffic Sign on Lighting Column
 - Proposed Illuminated Traffic Sign back to back with non-illuminated sign on new Post
 - Relocated Non-Illuminated Traffic Sign on new post
 - Relocated Non-Illuminated Traffic Signs back to back on new post
 - Relocated Illuminated Traffic Sign on new post
 - ▭ Proposed Planters
 - ▭ Existing Planters
 - Proposed Manchester Bollard - Static
 - Proposed Traffic Bollard - NAL X-Last Standard Bollard (or similar approved)
 - Proposed Reboundable Traffic Bollard - NAL Quick-Flex Bollard (or similar approved)
 - Proposed road markings
 - Existing road markings
 - Existing road markings to be refreshed
 - ▭ Build-outs
 - ▭ Temporary Build-outs



Rev	Rev. Date	Purpose of revision	Drawn	Checked	Rev'd	Appr'd
P00	03/03/23	SUITABLE FOR REVIEW AND COMMENT	DE	KG	HT	HT
P01.1	03/03/23	AMENDMENTS FOLLOWING BCC COMMENTS	BG	OW	OW	HT

Jacobs
 7th Floor, 2 Colmore Square, 38 Colmore Circus
 Queensway, Birmingham, B4 6BN
 Tel: +44(0)121 237 4000 www.jacobs.com

Client

Project
 PLACES FOR PEOPLE
 LOZELLS LTN DETAILED DESIGN

Drawing title
 LOZELLS
 GENERAL ARRANGEMENT
 SHEET 10 OF 10

Drawing status
 S3 - SUITABLE FOR REVIEW AND COMMENT

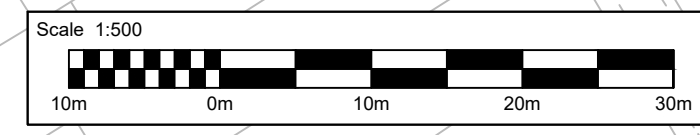
Scale
 1:500@A1 DO NOT SCALE

Jacobs No. B2309510
 Client no.
 Drawing number B2309510-JAC-HGN-00-DR-CH-0010 Rev P01

© Copyright 2023 Jacobs U.K. Limited. The concepts and information contained in this document are the property of Jacobs. Use or copying of this document in whole or in part without the written permission of Jacobs constitutes an infringement of copyright. Limitation: This drawing has been prepared on behalf of, and for the exclusive use of, Jacobs' Client, and is subject to, and issued in accordance with, the provisions of the contract between Jacobs and the Client. Jacobs accepts no liability or responsibility whatsoever for, or in respect of, any use of, or reliance upon, this drawing by any third party.

C:\working\jacobs_uk_highways_ssa\greenhbc\03894\3\B2309510\JAC-HGN-00-DR-CH-0010.dwg - 03/03/2023 15:48:02 - SHEET 01 - Greenhbc

REPRODUCED FROM ORDNANCE SURVEY MAPS WITH PERMISSION FROM THE CONTROLLER OF HM STATIONERY OFFICE. CROWN COPYRIGHT RESERVED. LICENCE NO. 10002124.



CONTINUED ON SHEET 6