

# Context



**BE BOLD BE BIRMINGHAM**

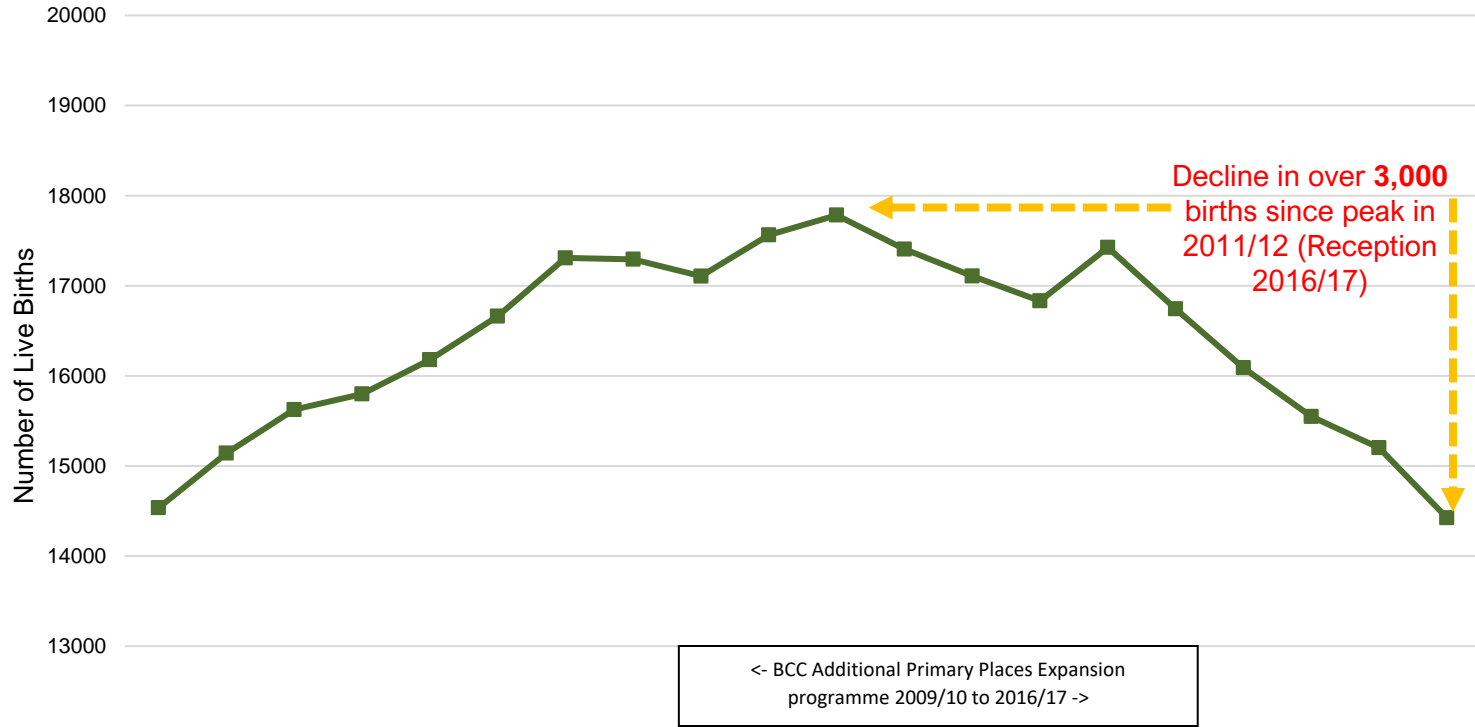


# Headlines

- Birth rates continue to fall, leading to surplus places in primary schools.
- We are keen to work with groups of schools through consortia to discuss area-based solutions to manage surplus places in local areas.
- We believe this forward planning will help us to continue meeting our sufficiency duty and landlord obligations as well support schools to maintain/improve standards.
- Given recent levels of cohort growth, the uncertainty around resettlement schemes and the growing speed of substantial housing growth in the city, there is no intention to close any primary school at this stage.
- We are clear that given the levels of surplus places, we will not be supporting the expansion of any primary schools for the foreseeable future.
- In contrast as larger cohorts of primary school pupils continue to move through to secondary schools, there is real pressure on KS3 places in some areas of the city.

# Latest Birth rates in Birmingham

Source:  
ONS

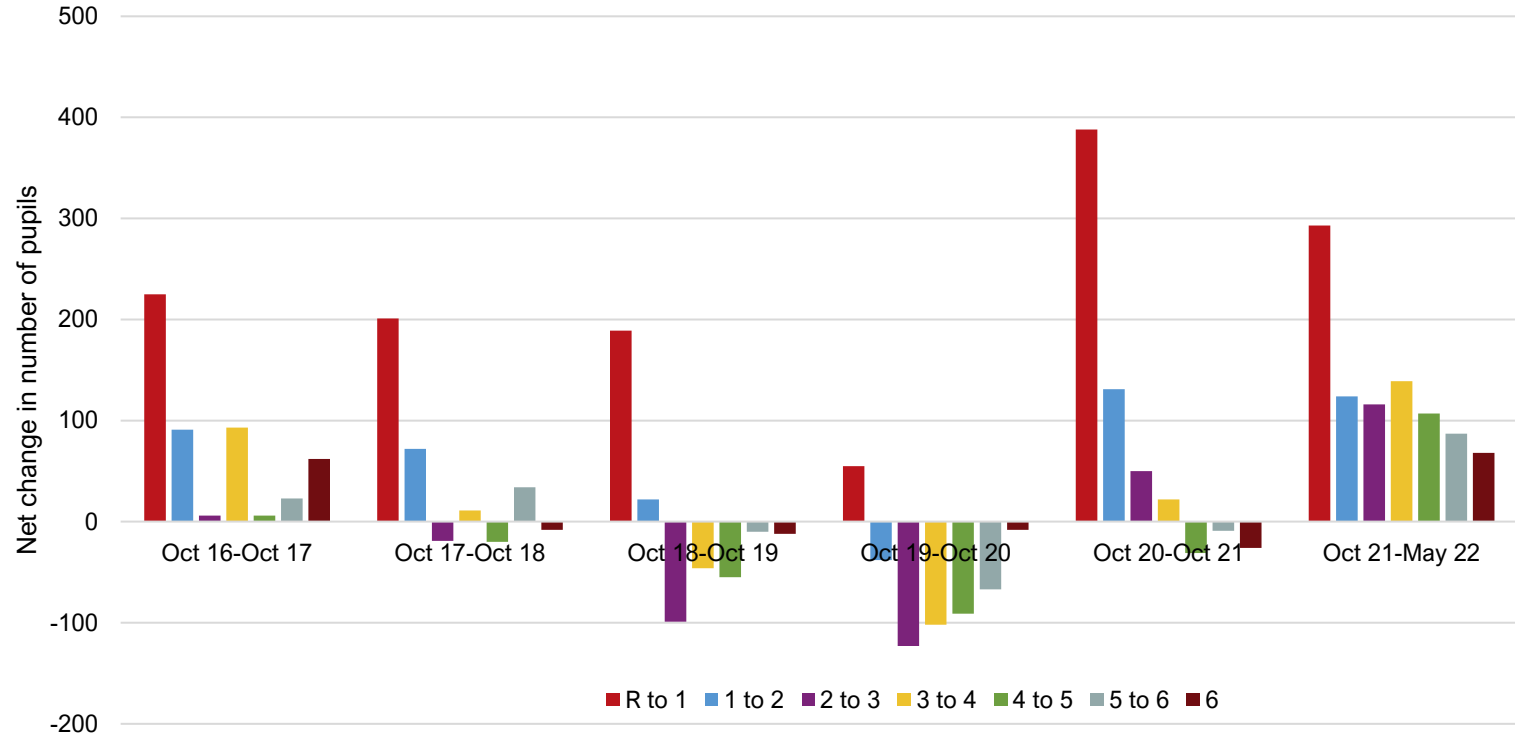


	2001/ 2002	2002/ 2003	2003/ 2004	2004/ 2005	2005/ 2006	2006/ 2007	2007/ 2008	2008/ 2009	2009/ 2010	2010/ 2011	2011/ 2012	2012/ 2013	2013/ 2014	2014/ 2015	2015/ 2016	2016/ 2017	2017/ 2018	2018/ 2019	2019/ 2020	2020/ 2021
Grand Total	14536	15142	15626	15799	16179	16662	17309	17294	17107	17564	17784	17407	17108	16832	17425	16744	16090	15549	15202	14425

Birth Year and data table

Note:  
2020/21  
ONS birth  
data is  
over 200  
births less  
than DfE-  
provided  
NHS data  
(14,643)

# In-year growth



# Major Housing Development Sites

Name of Site	Site Address(es)	Number of Houses	Average Pupil Yield per year group	Occupation Start Date	Requirements
<u>Langley Sustainable Urban Extension</u>	Sutton Coldfield	6000 (3000 in next 15 years)	252	2023	3 primary and 1 secondary new school onsite
<b>North Worcestershire Golf Course</b>	Frankley	800	34	TBC	1 primary school onsite
<u>Perry Barr Masterplan (incl Regeneration)</u>	Perry Barr	5000	210	2022	1 secondary school onsite (opens Sept 2021)
<u>Greater Icknield Masterplan</u>	Icknield Port Loop, out to Smethwick	5000 (3500 in next 15 years)	210	2025	1 secondary school onsite + primary contribution
<u>Birmingham Smithfield Masterplan</u>	City centre	2000	84	TBC	TBC
<b>Frankley SUE</b>	Frankley	2500	105	TBC	TBC
<b>Ladywood Regeneration (through Big City Plan)</b>					
<b>Druids Heath Regeneration</b>					
<b>East Birmingham Regeneration</b>					

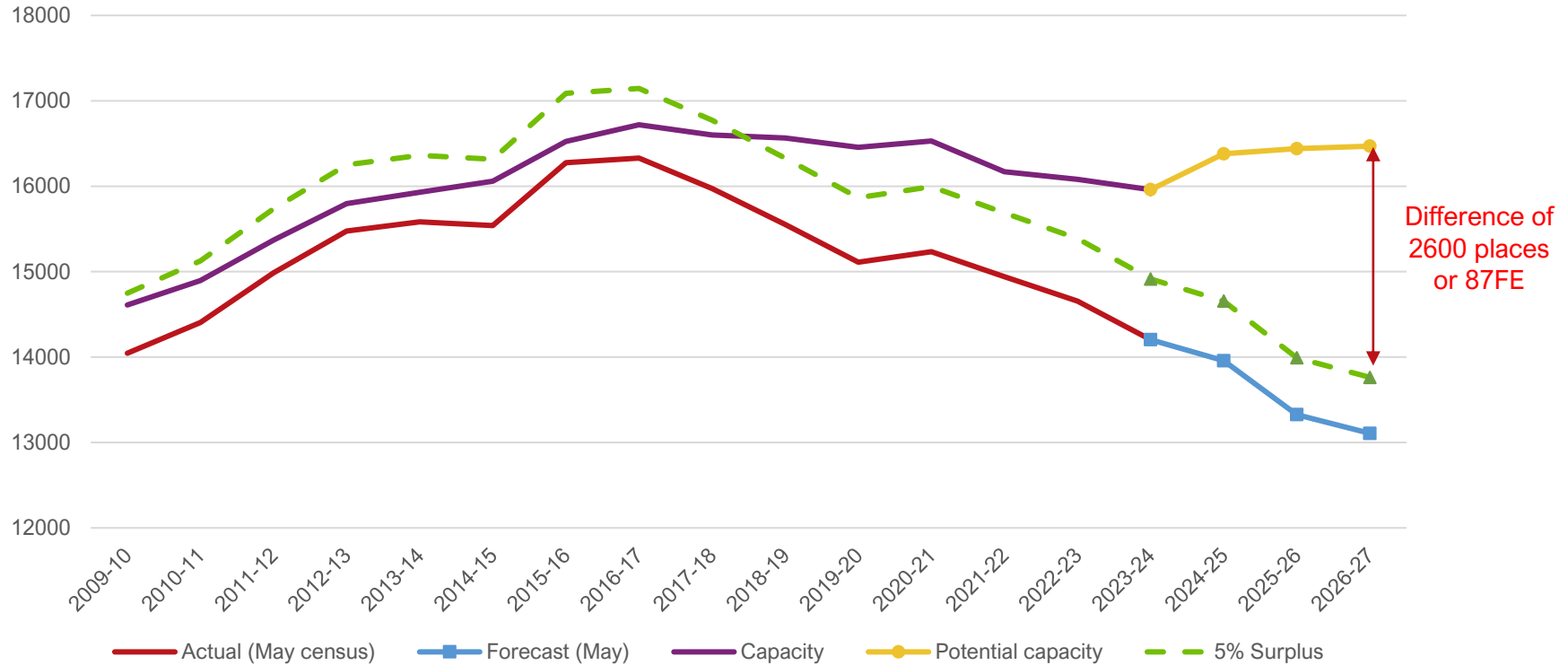
**BE BOLD BE BIRMINGHAM**



PROUD  
HOST  
CITY



# Reception forecast compared to capacity



BE BOLD BE BIRMINGHAM



# Areas of surplus

- Surplus is being seen across the city, but not by all schools.
- There are some areas of particular concern:

Planning Area Priority 1	Area
Expected Surplus	25% in R 2023
P33	Nechells
P41	Hodge Hill
P45	Tyburn

- Based on longer term forecasts, it is expected that places will need to be removed in 39 of the 46 planning areas between 2023/24 and 2026/27.*

Planning Area Priority 2	Area
Expected Surplus	10% in R 2023
P3	Kings Norton, Northfield
P11	Acocks Green, Sheldon, South Yardley
P16	Aston, Perry Barr
P18	Handsworth Wood, Lozells and East Handsworth
P20	Soho, Lozells and East Handsworth
P21	Weoley, Bartley Green
P22	Brandwood, Kings Norton
P23	Springfield, Sparkbrook
P25	Ladywood, Soho
P26	Hall Green, Acocks Green
P28	Handsworth Wood, Soho, Lozells and East Handsworth
P31	Bartley Green
P34	Sparkbrook, Nechells, Moseley and Kings Heath
P37	Bordesley Green, South Yardley, Nechells
P39	Weoley, Northfield, Longbridge
P40	Sparkbrook
P46	Quinton

# What is the process to reduce PAN?

- 1. Adopting a 'CPN' or 'capped pupil number'** following the closure of the admissions round. This is the route when offers have been made and the round becomes 'in-year'.
  - We will supply a form for any schools wishing to adopt changes for this academic year (2022/23).
- 2. Seeking a variation** to reduce PAN once a PAN has already been determined.
  - Maintained school proposals are submitted by LA to the Schools Adjudicator, and by academy trust to the RSC, for a decision.
  - A request needs to evidence that a 'major change in circumstances' has taken place since the PAN was originally determined.
  - We are currently collating paperwork to support schools for submissions to vary PANs for September 2023 entry.
- 3. Consulting on a reduced PAN** through the annual admissions consultation (18 months prior to the date of implementation) running from December until February.
  - Consultation commencing in December 2022 for 6 weeks will be for September 2024 admission arrangements/PANs. Changes to admission arrangements must be determined by the Admission Authority.



# We will continue to:

- carry out a regular forecasting review, including accuracy checks.
- work with schools and responsible bodies to find the most appropriate solutions to deal with surplus places within a school or an area.
- support schools with any further changes to in-year 2022/23 pupil number (CPNs).
- support applications for additional Falling Pupils Funding, if eligible and available.
- Commence consultation on PANs for Reception 2024, via SAFA.
- liaise with planning and housing departments, as well as bordering Local Authorities, to assess implications of housing proposals or other changes.
- propose a school reorganisation such as amalgamation or change of age range if deemed appropriate.
- make representation to any proposal to increase primary places.

# Contact Details

- For PAN related queries:  
[ediplanceplanning@birmingham.gov.uk](mailto:ediplanceplanning@birmingham.gov.uk)
- For asset related queries:  
[edsienquiries@birmingham.gov.uk](mailto:edsienquiries@birmingham.gov.uk)