



Alexander Stadium Redevelopment

Design updates
April 2021

Design updates

Since planning permission was granted for the Alexander Stadium Redevelopment in January 2020, several changes have needed to be made to the design. A 'non-material amendment' application will be submitted to Birmingham City Council in late April 2021 to seek approval for the following design changes. This type of application is used when minor changes are needed after planning permission has been granted.

1. The addition of two pathways in the north-west corner of the site.
2. An updated design for the East Stand South Retaining Wall, and a replacement bridge between the East Stand and Southern Concourse.
3. Changes to the car parking layout within the site.

The details of each design change are provided on the following slides.

Once the application has been submitted to Birmingham City Council, it will be available to view on the Council's Planning Online website:

<https://www.birmingham.gov.uk/planningonline>.

Should you have any questions about the design changes, please do not hesitate to contact Jade Tilley, Stakeholder and Public Liaison Manager for the Alexander Stadium Redevelopment at Jade.Tilley@arup.com.

Addition of two pathways

In 2020, the Canal & River Trust (CRT) installed a gently sloping pathway between the north-west corner of the Alexander Stadium site and the Tame Valley Canal towpath. This pathway is marked as '**Pathway 1**' on the masterplan on the right. The pathway provides a valuable additional access route between the canal and the stadium site.

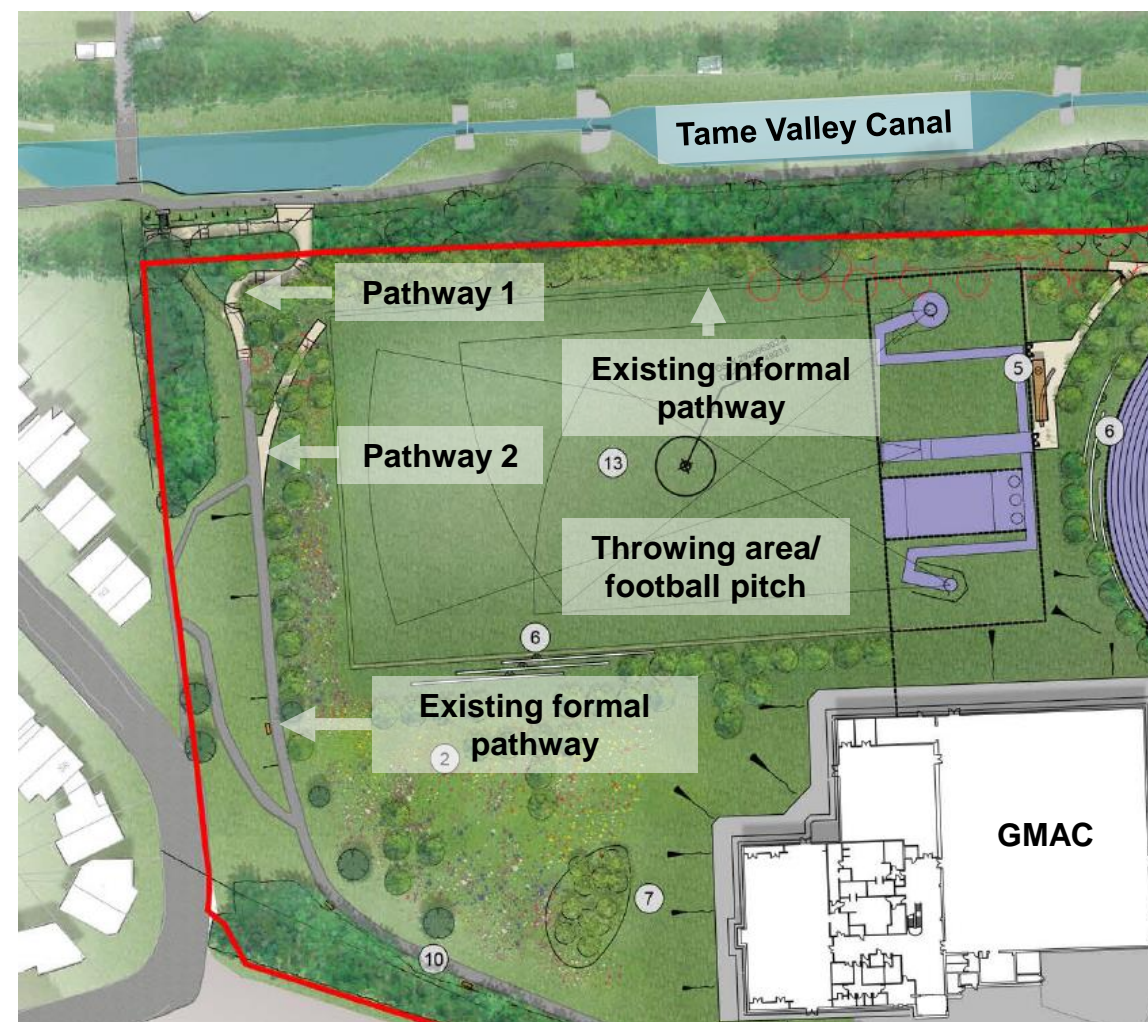
Whilst **Pathway 1** was installed by the CRT, it falls partly within the Alexander Stadium site (on land owned by Birmingham City Council) and therefore we would like to seek formal approval of the pathway from the Council's planning department.

As **Pathway 1** was designed and installed by the CRT, the Alexander Stadium Redevelopment team are unable to advise on the design specification for the pathway and would suggest directing any specific queries on this matter to the CRT at: enquiries.westmidlands@canalrivertrust.org.uk.

A second gently sloping pathway is proposed between;

- the existing formal pathway running along the western section of the Alexander Stadium site;
- the informal pathway running along the edge of the canal embankment; and
- the throwing area/football pitch.

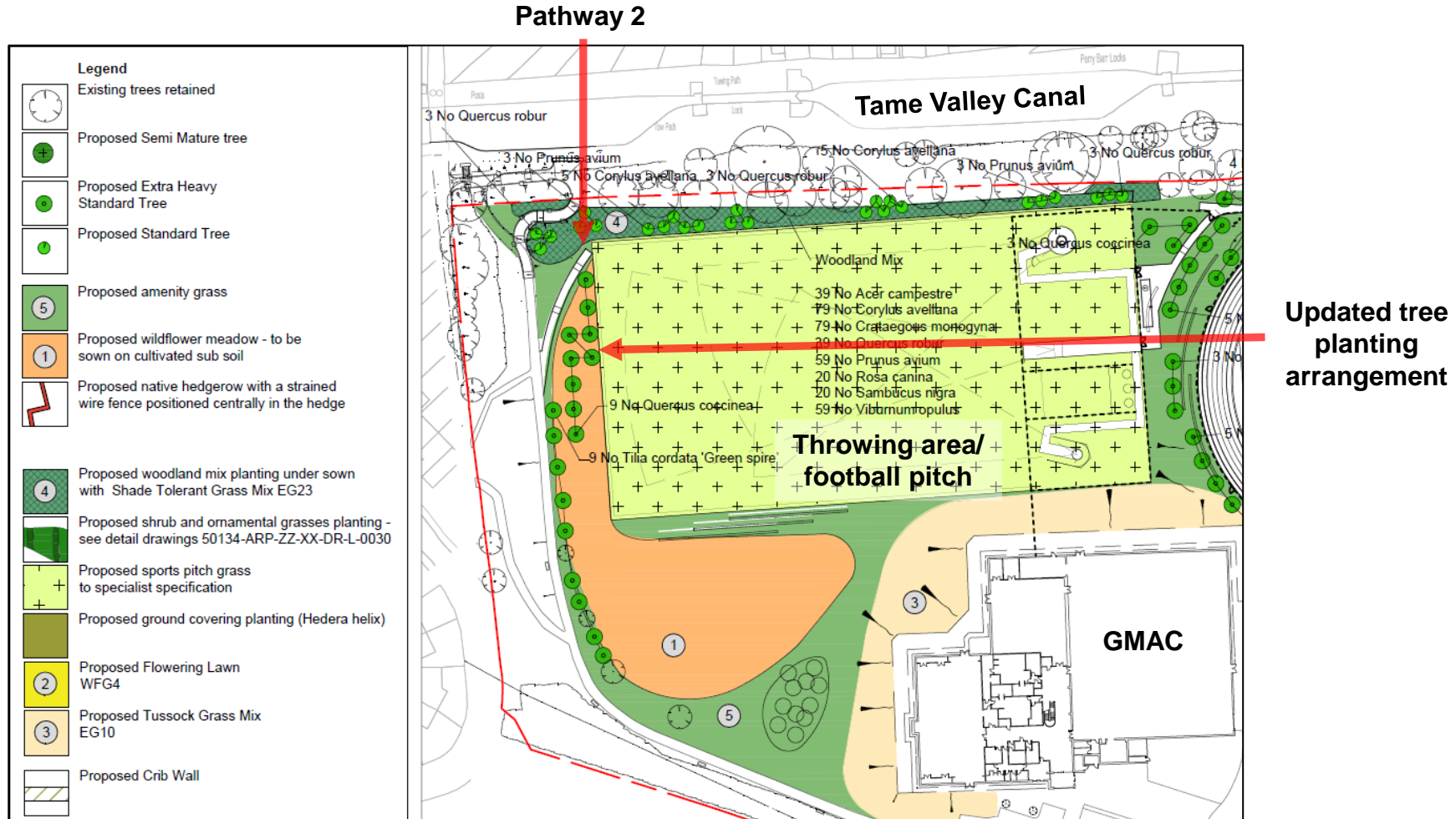
This pathway is marked as '**Pathway 2**' on the masterplan on the right, and would be installed by the Alexander Stadium Redevelopment team. **Pathway 2** would not impact any existing trees or vegetation. It would require minor changes to the arrangement of proposed trees in the vicinity, but the quantity of proposed trees would not change. The latest tree planting arrangement is shown on the planting plan on the next slide.



A masterplan extract showing the location of the two additional pathways

Addition of two pathways

The latest tree planting arrangement in proximity to **Pathway 2** is shown on the pre-Commonwealth Games planting plan extract below.

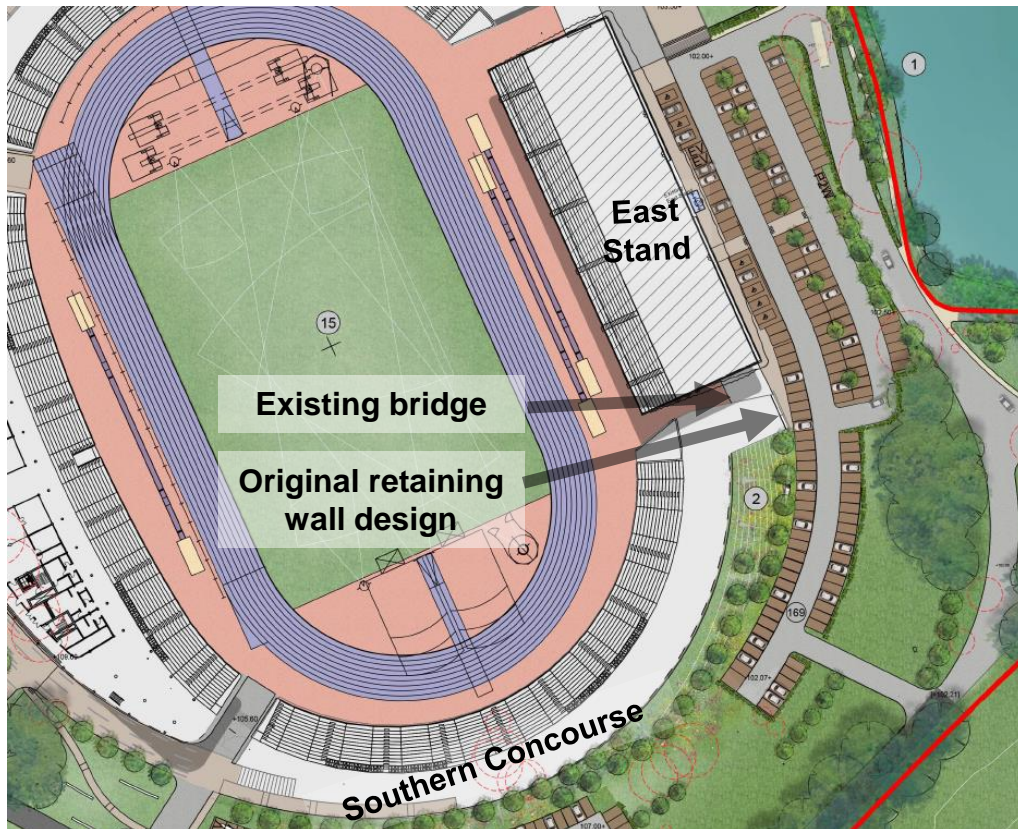


A pre-Commonwealth Games planting plan extract showing the updated tree planting arrangement in proximity to Pathway 2

Updated design of the East Stand South Retaining Wall and replacement bridge

In the original Alexander Stadium Redevelopment design, use of an existing bridge was intended to provide a connection between the East Stand and the Southern Concourse. The location of the bridge is shown on the images below.

The 'East Stand South Retaining Wall' is a structure which would support the bridge, and retain the ground allowing a connection to be made between the bridge and the Southern Concourse. The location and original design of the retaining wall is shown on the images below. The original design of the retaining structure involved a blank vertical wall.



A masterplan extract showing the original East Stand South Retaining Wall, and existing bridge



A visualisation showing the original East Stand South Retaining Wall, and existing bridge

Updated design of the East Stand South Retaining Wall and replacement bridge

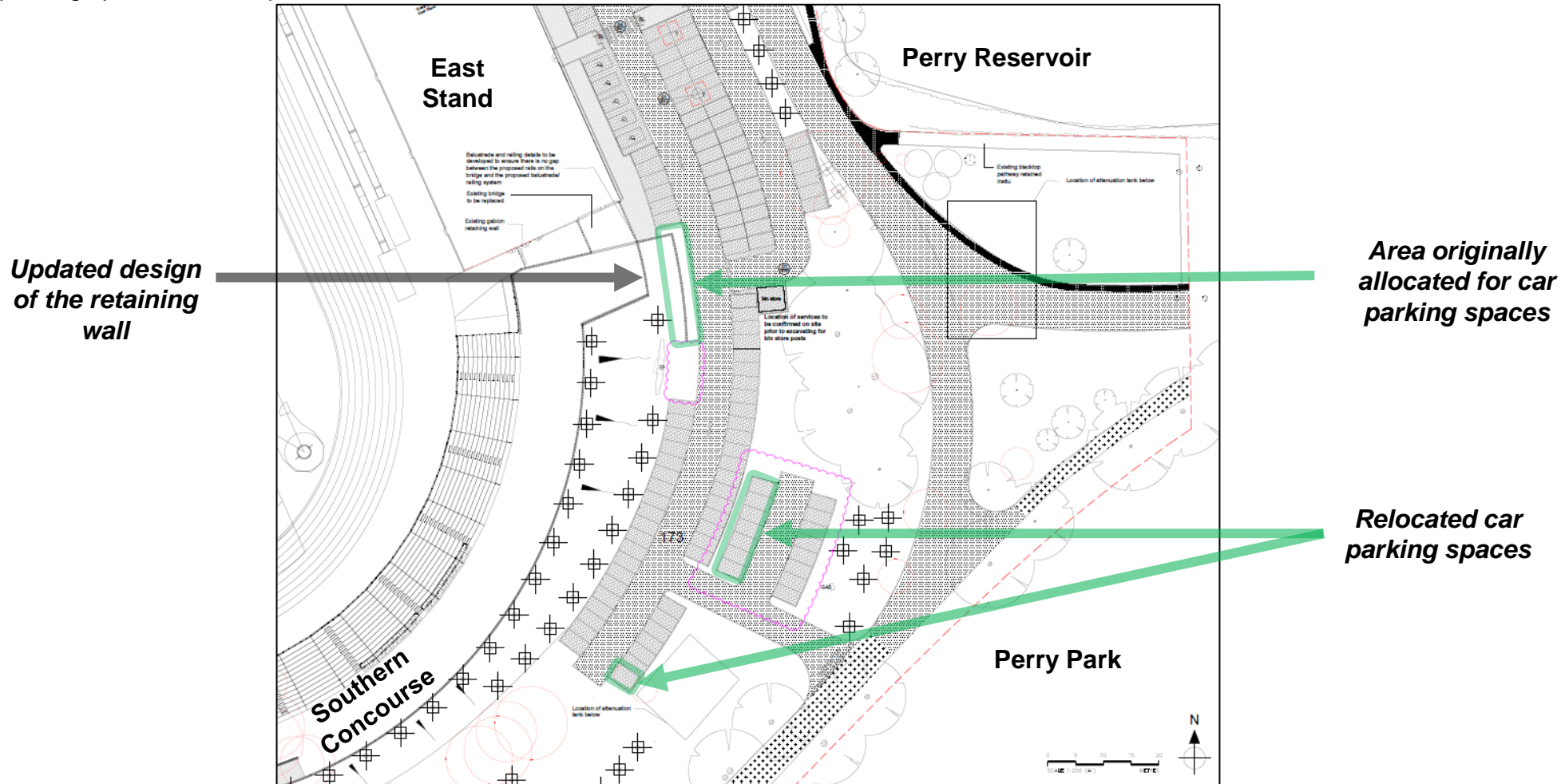
A replacement bridge between the East Stand and Southern Concourse, and changes to the design of the East Stand South Retaining Wall are required. These changes will resolve a structural issue associated with the bridge, and improve the appearance of the retaining wall. The updated design adds a 'step' to the retaining wall in order to break up the appearance of the wall, as shown on the image below. The 'step' would be planted with wildflowers to match the surrounding embankment. The updated design would not impact any existing or proposed trees, or other vegetation. Whilst it is not intended that the 'step' in the retaining wall is accessed by members of the public, a safety railing has been added as a precautionary measure.



An image showing the replacement bridge and updated design of the East Stand South Retaining Wall

Relocated car parking spaces to accommodate the East Stand South Retaining Wall

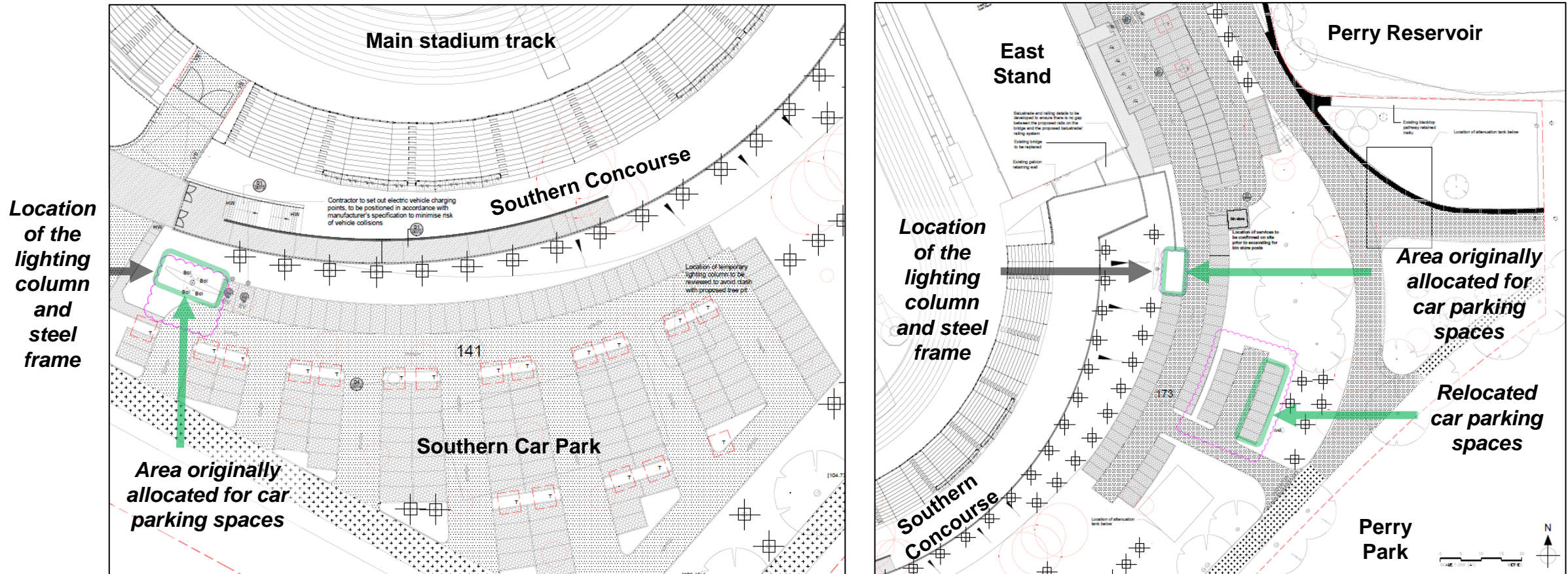
The updated design of the East Stand South Retaining Wall requires the wall to step out into an area originally designated for car parking spaces. Eight car parking spaces would be affected and therefore would be relocated. The original, and new locations of the car parking spaces are outlined in green on the drawing below. This change would not impact any existing trees or other vegetation. However, an additional tree and a hedgerow will be planted between the relocated parking spaces and Perry Park, to help integrate the parking spaces into the parkland.



A drawing showing the relocated car parking spaces

Relocated car parking spaces to accommodate two temporary steel frames

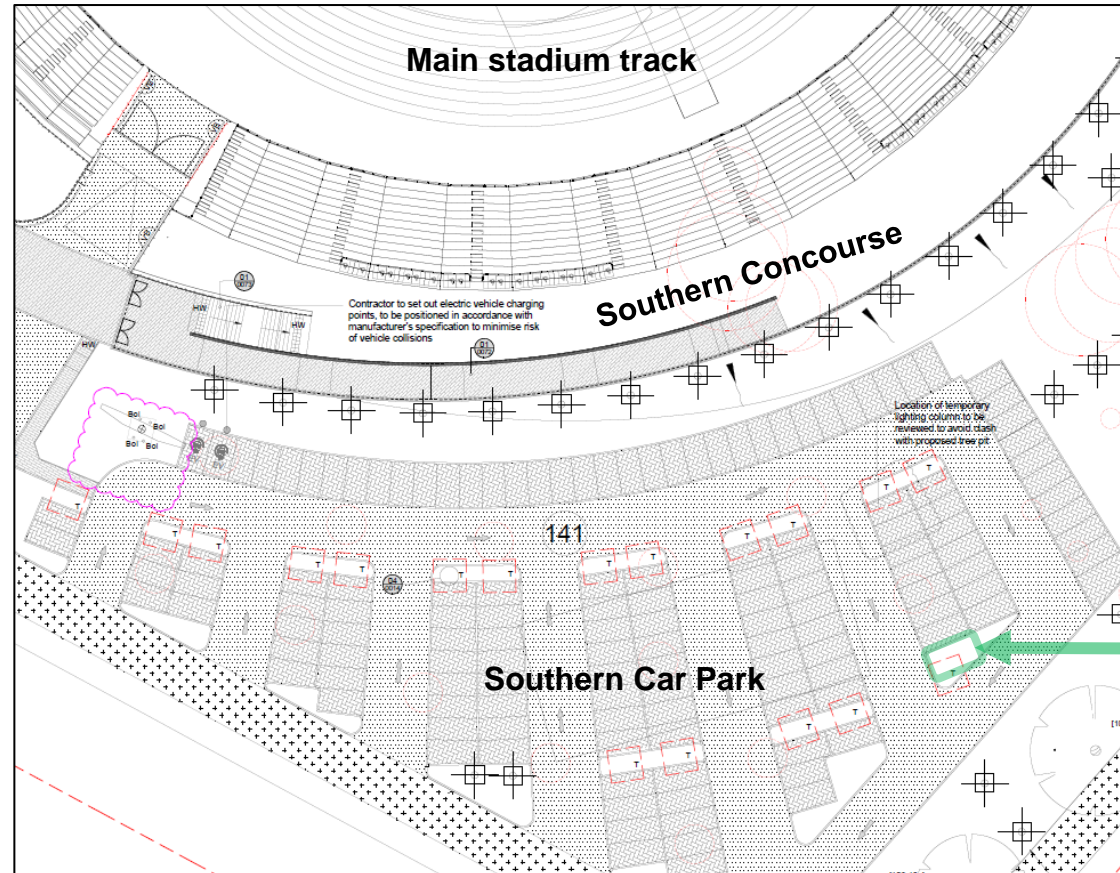
The Birmingham 2022 Organising Committee recently submitted an application to Birmingham City Council seeking approval for temporary changes to the four lighting columns which will be located in each corner of the stadium (application reference number: 2021/02809/PA). The proposal includes installation of a temporary steel frame around each lighting column to support a 'catenary cable' which will be installed at Games time to hold lighting and speakers for broadcasting. Two of the steel frames would fall into areas originally designated for car parking spaces. Eight car parking spaces would be affected and therefore would be relocated. The original, and new location of the car parking spaces is outlined in green on the drawings below. The relocation of car parking spaces would not impact any existing trees or other vegetation. However, as described on the previous slide, an additional tree and a hedgerow will be planted between the relocated parking spaces and Perry Park, to help integrate the parking spaces into the parkland.



Drawings showing the location of the lighting columns and steel frames, areas originally allocated for car parking spaces and the relocated car parking spaces

Removal of one car parking space from the Southern Car Park

It is proposed that one less car parking space is provided in the Southern Car Park given the space constraints, and to ensure there is sufficient space to accommodate the proposed planting, both before and after the Commonwealth Games. The location of the car parking space that would be removed from the design of the Southern Car Park is outlined in green below.



Area originally allocated for the car parking space

A drawing showing the location of the car parking space that would be removed from the design of the Southern Car Park