

DO NOT SCALE: CONTRACTOR TO CHECK ALL DIMENSIONS AND REPORT ANY OMISSIONS OR ERRORS

NOTES - General

- All dimensions in metres unless stated otherwise.
- The information shown on this drawing is intended to provide a general outline of the highway improvement works. Please refer to the detailed design drawings for specific scheme details.
- All works to be undertaken in accordance with Birmingham City Council's standards unless specified otherwise.
- This drawing is to be read in conjunction with all relevant architects, engineers and specialists drawings and specifications.
- Read in conjunction with drawing A106234_35_12_101.

KEY:

- Proposed Kerb Line
- Existing Road Markings Retained
- Proposed Blister Tactile Paving to Controlled Crossing
- Proposed Corduroy Tactile Paving
- Proposed Tactile Paving to Uncontrolled Crossing
- Central Island in Contrasting Colour Surfacing
- Proposed Buff Colour Surfacing
- Proposed Black Colour Surfacing
- Proposed Paving Area in Footway
- Proposed Paving Area in Loading Bays and Building Access
- Proposed Setts in in Carriageway
- HVM Granite Benches
- Works Extent

CONSTRUCTION

SCHEDULE OF CHANGES SINCE T01

- Islands at cycle turn changed
- Southern kerb on left turn from Livery St changed
- Southern kerb on Colmore Row changed
- Eastern kerb on Livery Street changed
- Slight adjustment to transverse kerbs at controlled crossing
- Footway and carriageway paving added
- Carriageway surfacing added
- Cut-Line to drawing No. A106234_35_12_101 added
- Items added to key
- Highway Boundary removed
- Zig-zag road marking adjusted to match new kerb alignment
- Taxi bay on Livery Street adjusted to match new alignment
- Note 3 changed
- Loop advertising removed
- Bus Stand changed to Bus Stop
- Transverse kerb added and dashed line removed in loading bay outside Tesco
- Work extents now include the road markings on Edmund Street and Barwick Street.
- Zig-zag markings on approach from Livery Street changed to 2m marks and number has been reduced.
- Loading bay on corner of Livery Street and Edmund Street removed and replaced by double yellow lines and tabs
- Adjustment to HVM blocks on southern side

REV	DESCRIPTION	BY	CHK	APP	DATE
C03	FOR CONSTRUCTION - SEE SCHEDULE OF CHANGES	TP	JH	RB	10.12.19
C02	FOR C4 ENQUIRIES IN NOVEMBER 2019	TP	JH	RB	20.11.19
C01	FOR C4 ENQUIRIES IN JUNE 2019	TP	JH	MR	12.06.19

BroadwayMalyan^{BM}

54 HAGLEY ROAD
BIRMINGHAM
B16 8PE

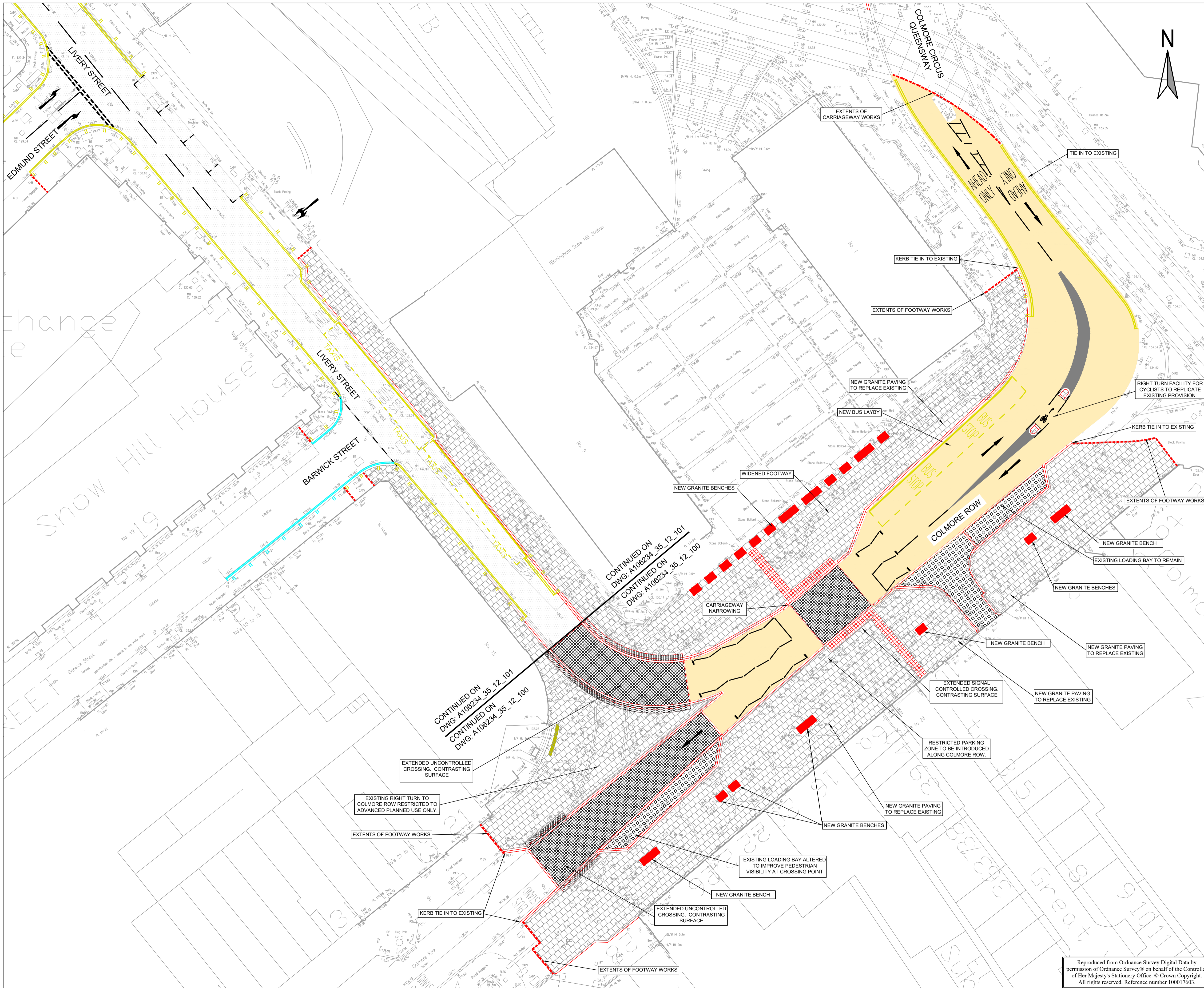
TEL: +44 (0)121 456 7444
e-mail: birmingham@wyg.com



Project:
**SNOW HILL PUBLIC REALM
PROJECT 1.1 -
COLMORE ROW EAST AND LIVERY STREET**

Drawing Title:
**GENERAL ARRANGEMENT
COLMORE ROW AND LIVERY STREET
(SHEET 1 OF 2)**

Scale @	A1	Drawn	Date	Checked	Date	Approved	Date
1:250	TP	JAN	2018	JH	JAN	RB	JAN
Project No.	35	Office	Type	Drawing No.	100	Revision	C03
A106234			12				



Reproduced from Ordnance Survey Digital Data by permission of Ordnance Survey® on behalf of the Controller of Her Majesty's Stationery Office. © Crown Copyright. All rights reserved. Reference number 100017603.

DO NOT SCALE: CONTRACTOR TO CHECK ALL DIMENSIONS AND REPORT ANY OMISSIONS OR ERRORS

NOTES - General

- All dimensions in metres unless stated otherwise.
- The information shown on this drawing is intended to provide a general outline of the highway improvement works. Please refer to the detailed design drawings for specific scheme details.
- All works to be undertaken in accordance with Birmingham City Council's standards unless specified otherwise.
- This drawing is to be read in conjunction with all relevant architects, engineers and specialists drawings and specifications.
- Read in conjunction with drawing A106234_35_12_100.

KEY:

- Proposed Kerb Line
- Existing Road Markings Retained
- Proposed Blister Tactile Paving to Controlled Crossing
- Proposed Corduroy Tactile Paving
- Proposed Tactile Paving to Uncontrolled Crossing
- Central Island in Contrasting Colour Surfacing
- Proposed Buff Colour Surfacing
- Proposed Black Colour Surfacing
- Proposed Paving Area in Footway
- Proposed Paving Area in Loading Bays and Building Access
- Proposed Setts in in Carriageway
- HVM Granite Benches
- Works Extent

CONSTRUCTION

SCHEDULE OF CHANGES SINCE T01


- Southern kerb on left turn from Livery St changed
- Southern kerb on Colmore Row changed
- Eastern kerb on Livery Street changed
- Slight adjustment to transverse kerbs at controlled crossing
- Footway and carriageway paving added
- Carriageway surfacing added
- Cut-Line to drawing No. A106234_35_12_100 added
- Items added to key
- Highway Boundary removed
- Zig-zag road marking adjusted to match new kerb alignment
- Taxi bay on Livery Street adjusted to match new alignment
- Note 3 changed
- Double headed arrow in car park exit adjusted
- Angle of Hatching at No Entry on Livery Street rotated and surrounding line changed to dash
- Directional arrows added between Edmund Street and Cornwall Street.
- No Loading blips added opposite loading bay
- No Loading blips between car park and taxi rank
- All parking bay road markings revised
- Parking bays updated on Livery Street between Cornwall Street and A4400.
- Viewports adjusted to accommodate additional area of road markings and street lighting.
- Work extents now include the road markings on Cornwall Street, Edmund Street and Barwick Street.
- Loading bay on corner of Livery Street and Edmund Street removed and replaced by double yellow lines and tabs.
- Zig-zag markings on approach from Livery Street changed to 2m marks and number has been reduced.

REV	DESCRIPTION	BY	CHK	APP	DATE
C03	FOR CONSTRUCTION - SEE SCHEDULE OF CHANGES	TP	JH	RB	10.12.19
C02	FOR C4 ENQUIRIES IN NOVEMBER 2019	TP	JH	RB	20.11.19
C01	FOR C4 ENQUIRIES IN JUNE 2019	TP	JH	MR	12.06.19

BroadwayMalyan^{BM}

54 HAGLEY ROAD
BIRMINGHAM
B16 8PE

TEL: +44 (0)121 456 7444
e-mail: birmingham@wyg.com



Project:
**SNOW HILL PUBLIC REALM
PROJECT 1.1 -
COLMORE ROW EAST AND LIVERY STREET**

Drawing Title:
**GENERAL ARRANGEMENT
COLMORE ROW AND LIVERY STREET
(SHEET 2 OF 2)**

Scale	Drawn	Date	Checked	Date	Approved	Date
1:250	TP	JAN 2018	JH	JAN 2018	RB	JAN 2018
Project No.	Office	Type	Drawing No.	Revision		
A106234	35	12	101	C03		

Reproduced from Ordnance Survey Digital Data by permission of Ordnance Survey® on behalf of the Controller of Her Majesty's Stationery Office. © Crown Copyright. All rights reserved. Reference number 100017603.

