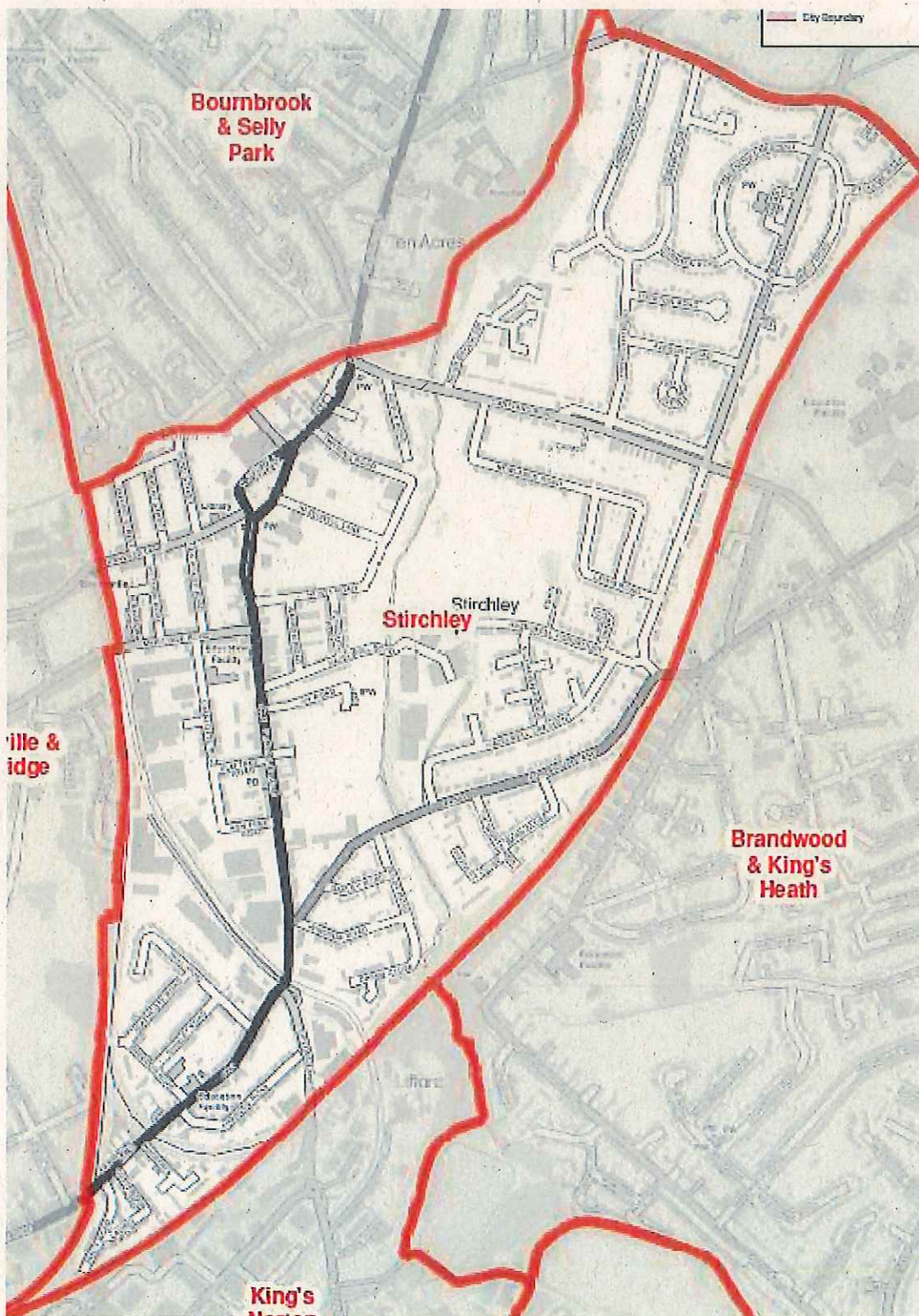


STIRCHLEY WARD PLAN 2018 - 2022





Contents

<u>Item</u>	<u>Page</u>
Ward Description	4
Policy context	X
Priorities 2012-14	X
Useful Contacts	X

Ward Description

Stirchley Ward is made up of three main micro neighbourhoods

- Pineapple Estate
- Central Stirchley including the High Street, Pershore Road
- Stirchley - Cotteridge

Stirchley is a unique place. It retains much of its historic character and buildings along with its wide range of vibrant independent shops, local entrepreneurship and creativity

Stirchley is characterised by high levels of social capital, active citizens and community activity as well as being well networked

Ward Councillor:

Councillor Mary Locke (Labour)



Contact:- Mary.Locke@birmingham.gov.uk Tel: 077033 72981

The Stirchley Ward is within the parliamentary constituency of Selly Oak

The local **Member of Parliament** for Selly Oak Constituency within which Stirchley Ward is situated in is Steve McCabe (Labour)

Address – House of Commons, Westminster, London SW1A 0AA Tel: 0121 443 3878





Origins of the name “Stirchley” – Did you know

There's a reference to a Stercan Lei in the 730 Cartularium Saxonicum, a collection of Anglo-Saxon charters. Stirk or styrk is an old word for a heifer, and lei means a clearing, so this was an area of forest cleared to make pasture for cattle.

In 1789, it was known as Stutley and in 1796 it was being known as Sturchley.

Key Ward Statistics and Demographic Information

(Data from 2018 / 19)

Stirchley Ward:

- has a **population** of approximately **9,946** (0.9% of Birmingham Population- 1.137 M)
- has an **age profile** of 19.3% aged 0-15 years (cp. to B- 22.8%), 68.8% aged 18-64 years (cp. to B- 64.3%) and 11.9% aged 85+ years (cp. to B – 12.9%)
- is characterised as predominantly White British / Irish – 75% as compared to the City average of 53.1% but with an emerging and growing Black African and Caribbean community – and Asian community
- The **Unemployment rate** is 7.4% as compared to the city rate of 11.1%
- is ranked 1366th most deprived out of 7,511 wards nationally
- has a **tenure profile** of mainly owner occupier (65.6%) and privately rented (19.8%) – both higher than the city average. From the Ward segment data this is characterised as Transient renters – 23%, Aspiring Homemakers – 20.5% and Modest Traditions – 14%

There are **2 Primary Schools** within the ward and no secondary schools or colleges of further education

- Stirchley Primary School
- Cotteridge Primary School

Significant resources (listed physical assets) in the ward include:

- Stirchley Baths Community Hub
- Hazelwell Park
- Stirchley Park
- Dads Lane Community Centre
- Churches – Stirchley Community Church, Grace Church, Church of the Ascension, St. Andrews Methodist Church
- Stirchley Library
- TS Sherbourne Sea Cadets
- Artefact
- Stirchley United Working Men's Club



- Potential of the Seven Capital site
- Potential of future Camp Line station

Key stakeholders within the ward include:

- West Midlands Police – Bournville Team cover the ward
- West Midlands Fire Service (Kings Norton)
- Stirchley The Way Forward
- Stirchley Neighbourhood Forum
- Dads Lane Community Association
- Stirchley in Bloom
- Businesses along Pershore Road
- Birmingham City Council – local officers based at Stirchley Baths Community Hub
- Stirchley Community Market
- Friends of the Parks Groups
- Friends of Stirchley Libraru
- Stirchley History Group
- Stirchley Open Cinema
- Housing Associations –Accord, Stirchley cooperative housing



Policy Context

The Paper Localism in Birmingham: A Framework for Future Policy, March 2018 set out objectives for future ward-based working which will focus on: improved service delivery in neighbourhoods, an agenda of "Neighbourly Neighbourhoods" and a commitment to a "Whole Place" and "Whole System" way of working.

The new ward planning process is one of the main mechanisms by which citizens and communities can participate in setting local priorities themselves. The ward plan will be used to develop and enhance local engagement and community governance. The ward plan will highlight local priorities and planned actions.

The ward plan aligns with **Birmingham City Council Vision and Priorities 2017-2020**

BIRMINGHAM CITY COUNCIL VISION – *A city of growth where every child, citizen and place matters.*

COMMUNITY COHESION STRATEGY FOR BIRMINGHAM - *Forward together to build a fair and inclusive City for everyone*

WORKING TOGETHER IN BIRMINGHAM'S NEIGHBOURHOODS – *We recognise the value of all different types of neighbourhood organisation, which all have different strengths. Local residents need to be able to develop their own ways of getting involved in their own area. The democracy of the city needs strong participation as well as elected representation*

BIRMINGHAM CITY COUNCIL OUTCOMES – *What we want to achieve:*

- Birmingham is an entrepreneurial city to learn, work and invest in
- Birmingham is an aspirational city to grow up in
- Birmingham is a fulfilling city to age well in
- Birmingham is a great city to live in
- Birmingham residents gain the maximum benefit from hosting the Commonwealth Games



Ward Priorities

Although new ward arrangements provide an opportunity through ward meetings, councillors' advice surgeries and stakeholder engagement to re-establish local priorities, it is important to revisit and note previously agreed ward priorities and the ward action tracker, which has tracked ward priorities for over 12 months.

Ward Tracker Priorities – from previous ward Bournville (2017/18)

- Environmental Issues
- Road Safety – 20mph zones
- Highways – Local Sustainable Transport Fund

Local Innovation Fund Priorities: General – “Doing things differently in neighbourhoods to make a better place to live”

- Citizens' Independence and Wellbeing
- Active citizens and communities stepping up

Local Community Safety Partnership and/or Neighbourhood Tasking Group Priorities (where applicable):

- Anti-social behaviour
- Youth Crime



Funding/Budgets

1. The sum of £48k from the old ward arrangements have been devolved to the organisations within the ward to deliver **Local Innovation Fund (LIF)** Projects.

Project	Org. name	Sum awarded	Status
Peer to Peer Support Programme	Birmingham Community Matters	£10,000	Approved 2017/18
Stirchley Library	Friends of Stirchley Library	£25,000	Approved 2017/18
Community Cinema	Stirchley Open Cinema	£10,000	Approved 2017/18

2. A share of the **Proceeds of Crime funding** from 2017/18 and 2018/19

Project	Org. name	Sum awarded	Status
Stirchley in Bloom	Stirchley The Way Forward	£300	2017/18
Graffiti / Cleaning Equipment		£500	2018/19
Audio Recording Equipment	Stirchley History Group	£180	2018/19
Pineapple Toddler Cafe	The Church of Ascension	£200	2018/19

3. **Highways Ward Minor Transport Measures budget** – As a single member ward £6,500 per annum is available – Projects still to be confirmed

Project	Org. name	Sum awarded	Status

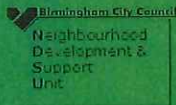
4. **Housing Environmental Works budget** – Monies are available pro-rata dependent on number of BCC properties. In Stirchley - £4,800/ annum to be spent on BCC properties

Project	Location	Sum allocated	Status
Flooring	Windsor Road Flats	£4,800	live

5. **Section 106 funding (as at 7/8/2018)**- All S106 monies must be spent in accordance with the wording of the agreement e.g. the agreement may stipulate Public Open Space, highway works on a specific road or within a certain area. Monies are both capital and revenue

Project	Location	Sum allocated	Status
Old Tesco Site Agreement No. 2011/00007/LA	Hazelwell Lane/ Persore Road/ Hunts Road/ Hazelwell Street	*Feasability £20K *Env Enhancement £150k *Public Transport £30K	Currently non received as land now acquired by Seven Capital and will require negotiation
Old Tesco site Agreement No. 2014/00010/LA Expiry Date 27/6/2023	Land off Persore Road / Hazelwell Lane	Public Realm – Hazelwell Street Sum £177,615	Live £50K allocated to Stirchley Library repairs Environmental improvements along Stirchley High Street £127k – to be approved

6. **Selly Oak Constituency Neighbourhood Network Scheme** 2018-2020

#selloaknns
@SellyOakNNS
Live Life Laughing,
Doing the things you Love


This is a two year programme starting in October 2018 with the Lead Facilitator being the Neighbourhood Development and Support Unit.

Contact Karen.Cheney@birmingham.gov.uk

It is a Place based Intervention and Prevention community programme aimed at older adults (Over 50 years) enabling them to lead healthy, happy, independent lives within their own homes and communities.

The programme has £128,000 per year including a grants pot. First Round Grants due to be allocated in July 2019

Project	Location	Sum allocated	Status



--	--	--	--

7. Community Infrastructure Levy Currently N/A for Stirchley Ward

Project	Location	Sum allocated	Status

Please list any other sources of ward-based funding currently available or pending:-

- West Midland Police – Active Citizens Fund
- Future High Street Fund (Ministry of Housing, Communities and Local Government)
– an expression of interest was submitted from BCC for Stirchley in March 2019 –
pending decision in Summer 2019

Useful Links

- General link to BCC Website <https://www.birmingham.gov.uk/>
- Link for Ward Data
<https://public.tableau.com/profile/bcc.ck#!vizhome/2018BirminghamWardProfiles/2018BirminghamWardProfiles>
- Stirchley Framework – Supplementary Planning Document
www.birmingham.gov.uk/stirchleyspd
- Selly Oak Neighbourhood Network Scheme - Twitter @SellyOakNNS and use website to find community asset mapping
<https://brumnns.wordpress.com/2019/03/22/our-latest-community-asset-directory-is-here/>
-
-



Declaration

This plan has been drafted following engagement and discussions with local residents and ward stakeholders. It was discussed at the Stirchley Ward Meeting in October 2018 held at Stirchley Baths Community Hub and then to be formally agreed and adopted by those present at the Stirchley Ward meeting on: 25/6/19 to be held at Grace church

Signed [elected member(s) signature(s): _____

Councillor Mary Locke

Stirchley Ward Plan – Priorities 2018-22

“A city of growth where every child, citizen and place matters.”

Priority 1 Ward –wide Everyone within the new ward boundary of Stirchley feels included and has an opportunity to get involved

Action(s) / What needs to be done?	Where?	By Who?	By When	Stakeholders/ Resources	Update
Micro-neighbourhood residents meetings held on a regular basis	Across all 3 micro-neighbourhoods	Councillor Locke	Rolling programme of regular meetings	Residents and key community stakeholders	
Rotate Ward Forum Meetings across all of the ward Ensure dates are known well in advance and information shared widely across the ward	Ensure that at least one meeting in every municipal year is held in each micro neighbourhood	Councillor Locke NDSU	Rolling programme of quarterly ward forum meetings across the ward	Residents and key stakeholders	

Priority 2 Ward Wide – Building upon the already pro-active volunteering and active citizenship within the ward grow a sense of inclusivity, social cohesion and neighbourliness across the ward. Have a specific emphasis on young people – provision and opportunities

Action(s) / What needs to be done?	Where?	By Who?	By When	Stakeholders/ Resources	Update
Develop ward Recognition and Celebration Events	tbc	Via Cllr	tbc		
Working towards being the first formally recognised “Dementia Friendly Community in Birmingham as part of Selly Oak Neighbourhood Network Scheme	Ward Wide	Lead – Dani Dennis Selly Oak NNS	Autumn 2019	Residents, workers, gps, schools and businesses	



Priority 3 Ward Wide – A Clean and Green Ward

Action(s) / What needs to be done?	Where?	By Who?	By When	Stakeholders/ Resources	Update
Develop Community Litter Picks and Community Graffiti Hit Squads	Across the ward			NDSU -Proceeds of Crime grant awarded	
Support organisations such as Green Storchley, Storchley in Bloom and the Fruit and Nut Village in developing greener spaces by the community for the community				Proceeds of Crime Grant awarded Link to SONNS	
More appropriate street furniture – bins and benches					
Reduce flytipping and litter “grot spots”					
Look to see how Storchley can become cleaner & greener to improve the environment & air quality eg request for air monitoring equipment on/near the high street	Across the ward				

Priority 4 Pineapple Estate – The revitalisation of Dads Lane Community Association and community influence on Camp Hill Railway Line

Action(s) / What needs to be done?	Where?	By Who?	By When	Stakeholders/ Resources	Update
Give support and guidance to local residents and key community stakeholders to redevelop Dads Lane CA as a vibrant community asset for the neighbourhood	Dads Lane CA	Cllr, Officers and CSR	On-going	Bid to Lottery funding Corporate Social Responsibility opps	

Ensure that local residents are aware of and able to be involved in any future consultations in relation to the Camp Hill Railway line								

Priority 5 Cotteridge end of ward – Ensuring that this new part of the ward is included and networked in to any new developments

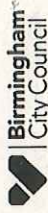
Action(s) / What needs to be done?	Where?	By Who?	By When	Stakeholders/ Resources	Update
Develop Cllr. Surgeries within the neighbourhood					
Transport Improvement Line					

Priority 6 Central Stirchley including the High Street – Ensuring Meaningful engagement with the Severn Capital Development and developing a positive image for the High Street/ Retail

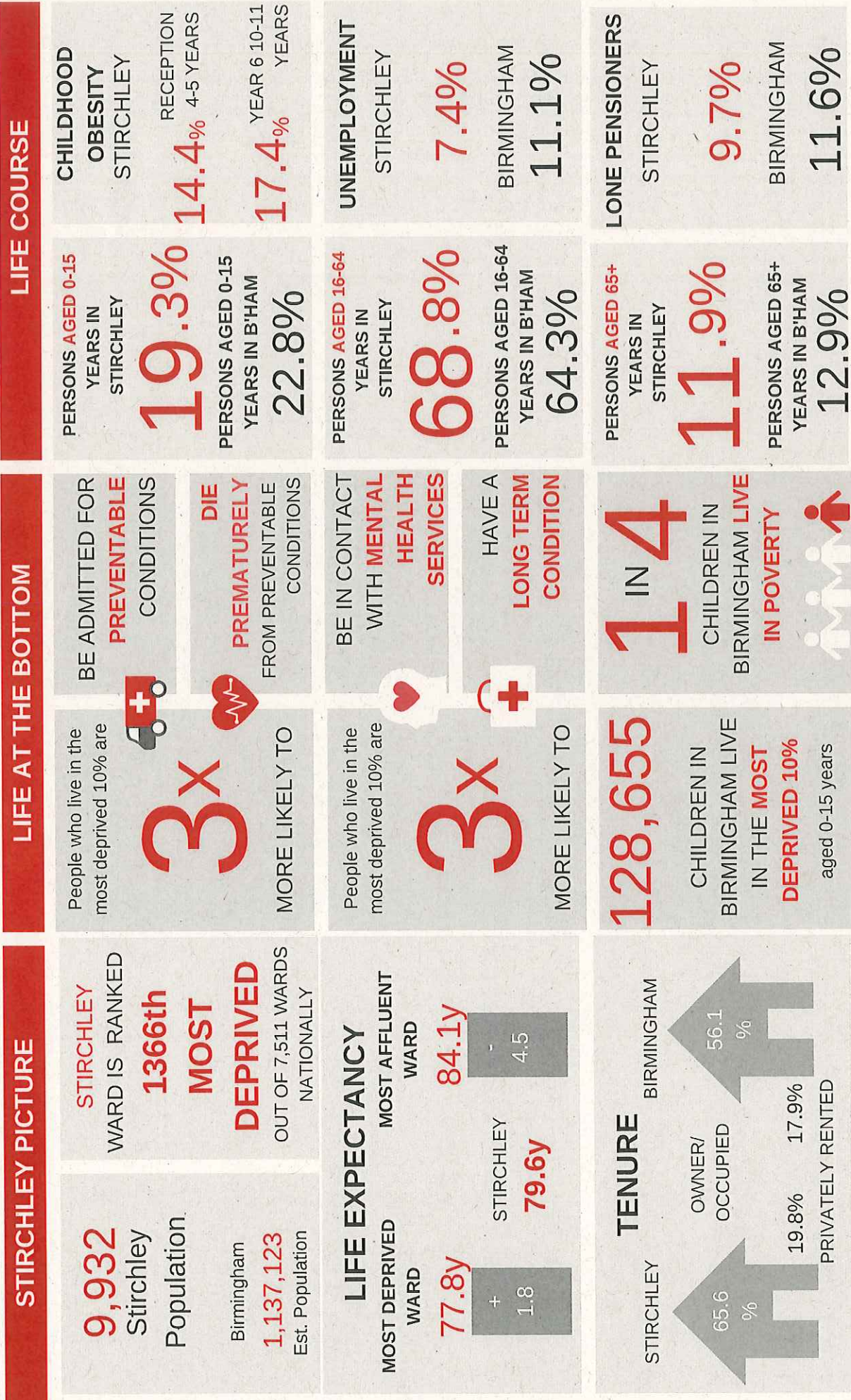
Action(s) / What needs to be done?	By Who?	By When?	Stakeholders/ Resources	Where/with who?	Update
Ensuring Community Involvement with the Future High Street Fund Proposal and the positive development of the High Street					
The timely rollout of the proposed S106 funded improvements to the High Street					
Ensure meaningful dialogue with Seven Capital and the proposed development of their site					

BIRMINGHAM STIRCHLEY

WORKING TOWARDS A HEALTHY CITY: HEALTH INEQUALITIES



Public Health, March 2019
Numbers have been rounded



Data sourced from: population Census 2011 and Census population estimate 2015; life expectancy 2013-2015, Public Health Outcome Framework; Deprivation IMD index and Exeter GP Registered population data; Poverty, Hard Edge Report; Graphics: Canva; The Noun Project

