

BIRMINGHAM ALLENS CROSS

WORKING TOWARDS A HEALTHY CITY: HEALTH INEQUALITIES

Public Health, March 2019
Numbers have been rounded

ALLENS CROSS PICTURE

10,962

Allens Cross
Population

Birmingham

1,137,123

Est. Population

ALLENS CROSS
WARD IS RANKED

575th
MOST
DEPRIVED

OUT OF 7,511 WARDS
NATIONALLY

LIFE AT THE BOTTOM

People who live in the
most deprived 10% are

3x



MORE LIKELY TO

BE ADMITTED FOR
PREVENTABLE
CONDITIONS

DIE
PREMATURELY
FROM PREVENTABLE
CONDITIONS

LIFE COURSE

PERSONS AGED 0-15
YEARS IN
ALLENS CROSS

22.9%

PERSONS AGED 0-15
YEARS IN B'HAM

22.8%

**CHILDHOOD
OBESITY**

ALLENS CROSS
RECEPTION
4-5 YEARS

15.4%

YEAR 6 10-11
YEARS

26.5%

LIFE EXPECTANCY

MOST DEPRIVED
WARD

77.8y

+
3.1

ALLENS CROSS

80.9y

MOST AFFLUENT
WARD

84.1y

-
3.2

People who live in the
most deprived 10% are

3x



MORE LIKELY TO

BE IN CONTACT
WITH **MENTAL
HEALTH
SERVICES**

HAVE A
**LONG TERM
CONDITION**

PERSONS AGED 16-64
YEARS IN
ALLENS CROSS

62.1%

PERSONS AGED 16-64
YEARS IN B'HAM

64.3%

UNEMPLOYMENT

ALLENS CROSS

10.3%

BIRMINGHAM

11.1%

TENURE

ALLENS CROSS

BIRMINGHAM

60.5
%

OWNER/
OCCUPIED

56.1
%

23.9%

15.4%

RENTED FROM BCC

128,655

CHILDREN IN
BIRMINGHAM LIVE
IN THE **MOST
DEPRIVED 10%**

aged 0-15 years

1 IN 4

CHILDREN IN
BIRMINGHAM **LIVE
IN POVERTY**



PERSONS AGED 65+
YEARS IN
ALLENS CROSS

15.0%

PERSONS AGED 65+
YEARS IN B'HAM

12.9%

LONE PENSIONERS

ALLENS CROSS

12.7%

BIRMINGHAM

11.6%

BIRMINGHAM FRANKLEY GREAT PARK

WORKING TOWARDS A HEALTHY CITY: HEALTH INEQUALITIES

Public Health, March 2019
Numbers have been rounded

FRANKLEY GREAT PARK PICTURE

11,032
Frankley Great Park
Population Birmingham
1,137,123
Est. Population

FRANKLEY GREAT PARK
WARD IS RANKED
266th
MOST
DEPRIVED
OUT OF 7,511 WARDS
NATIONALLY

LIFE AT THE BOTTOM

People who live in the most deprived 10% are

3x



MORE LIKELY TO

BE ADMITTED FOR
PREVENTABLE
CONDITIONS

DIE
PREMATURELY
FROM PREVENTABLE
CONDITIONS

LIFE COURSE

PERSONS AGED 0-15
YEARS IN FRANKLEY
GREAT PARK

22.4%

PERSONS AGED 0-15
YEARS IN B'HAM

22.8%

CHILDHOOD
OBESITY

FRANKLEY GREAT
PARK
14.0% RECEPTION
4-5 YEARS

31.0% YEAR 6 10-11
YEARS

LIFE EXPECTANCY

MOST DEPRIVED
WARD

77.8y

+
0.2

FRANKLEY GREAT
PARK

78.0y

MOST AFFLUENT
WARD

84.1y

-
6.1

People who live in the most deprived 10% are

3x



MORE LIKELY TO

BE IN CONTACT
WITH **MENTAL**
HEALTH
SERVICES

HAVE A
LONG TERM
CONDITION

PERSONS AGED 16-64
YEARS IN FRANKLEY
GREAT PARK

65.5%

PERSONS AGED 16-64
YEARS IN B'HAM

64.3%

UNEMPLOYMENT
FRANKLEY GREAT
PARK

11.6%

BIRMINGHAM

11.1%

TENURE

FRANKLEY GREAT
PARK

50.8%

OWNER/
OCCUPIED

33.2%

RENTED FROM BCC

BIRMINGHAM

56.1%

15.4%

128,655

CHILDREN IN
BIRMINGHAM LIVE
IN THE **MOST**
DEPRIVED 10%
aged 0-15 years

1 IN **4**

CHILDREN IN
BIRMINGHAM **LIVE**
IN POVERTY



PERSONS AGED 65+
YEARS IN FRANKLEY
GREAT PARK

12.0%

PERSONS AGED 65+
YEARS IN B'HAM

12.9%

LONE PENSIONERS
FRANKLEY GREAT
PARK

10.1%

BIRMINGHAM

11.6%

BIRMINGHAM KINGS NORTON NORTH

WORKING TOWARDS A HEALTHY CITY: HEALTH INEQUALITIES

Public Health, March 2019
Numbers have been rounded

KINGS NORTON NORTH PICTURE

LIFE AT THE BOTTOM

LIFE COURSE

11,493

Kings Norton
North

Population
Birmingham

1,137,123

Est. Population

KINGS NORTON
NORTH

WARD IS RANKED

1143th

MOST

DEPRIVED

OUT OF 7,511 WARDS
NATIONALLY

People who live in the
most deprived 10% are

3x



MORE LIKELY TO

BE ADMITTED FOR
PREVENTABLE
CONDITIONS

DIE
PREMATURELY
FROM PREVENTABLE
CONDITIONS

PERSONS AGED 0-15
YEARS IN
KINGS NORTON NORTH

20.9%

PERSONS AGED 0-15
YEARS IN B'HAM

22.8%

CHILDHOOD
OBESITY

KINGS NORTON
NORTH

13.8% RECEPTION
4-5 YEARS

19.1% YEAR 6 10-11
YEARS

LIFE EXPECTANCY

MOST DEPRIVED
WARD

77.8y

+
3.0

KINGS NORTON
NORTH

80.8y

MOST AFFLUENT
WARD

84.1y

-
3.3

People who live in the
most deprived 10% are

3x



MORE LIKELY TO

BE IN CONTACT
WITH **MENTAL**
HEALTH
SERVICES

HAVE A
LONG TERM
CONDITION

PERSONS AGED 16-64
YEARS IN
KINGS NORTON NORTH

62.7%

PERSONS AGED 16-64
YEARS IN B'HAM

64.3%

UNEMPLOYMENT

KINGS NORTON
NORTH

8.4%

BIRMINGHAM

11.1%

TENURE

KINGS NORTON
NORTH

65.2%

OWNER/
OCCUPIED

15.2%

15.4%

RENTED FROM BCC

BIRMINGHAM

56.1%

128,655

CHILDREN IN
BIRMINGHAM LIVE
IN THE **MOST**
DEPRIVED 10%

aged 0-15 years

1 IN 4

CHILDREN IN
BIRMINGHAM **LIVE**
IN POVERTY



PERSONS AGED 65+
YEARS IN
KINGS NORTON NORTH

16.4%

PERSONS AGED 65+
YEARS IN B'HAM

12.9%

LONE PENSIONERS

KINGS NORTON
NORTH

13.4%

BIRMINGHAM

11.6%

BIRMINGHAM KINGS NORTON SOUTH

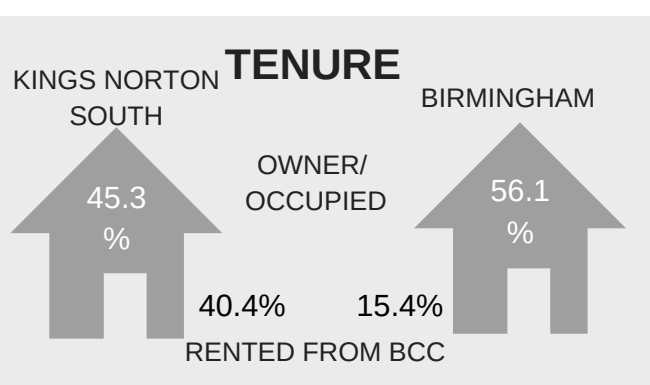
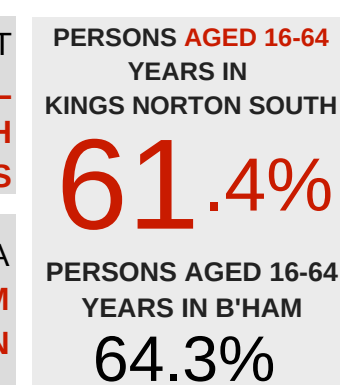
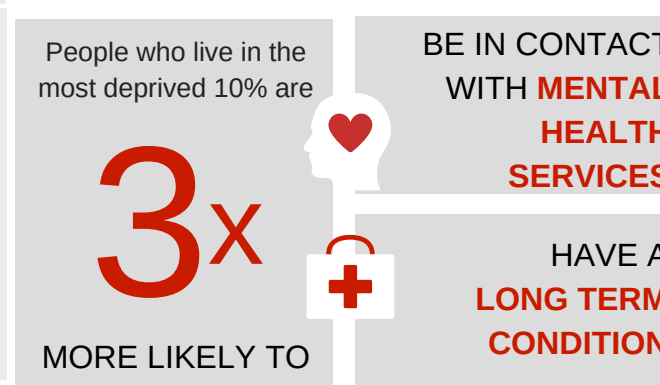
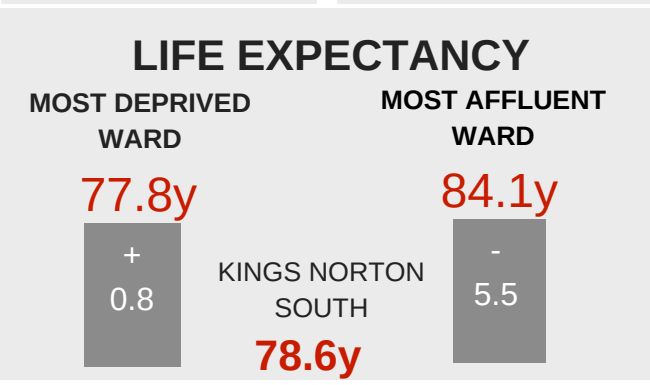
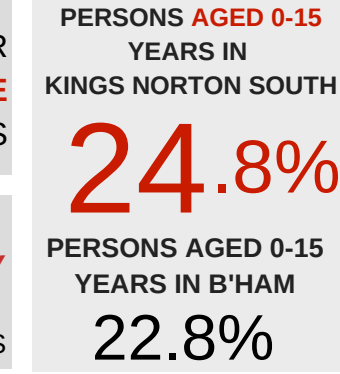
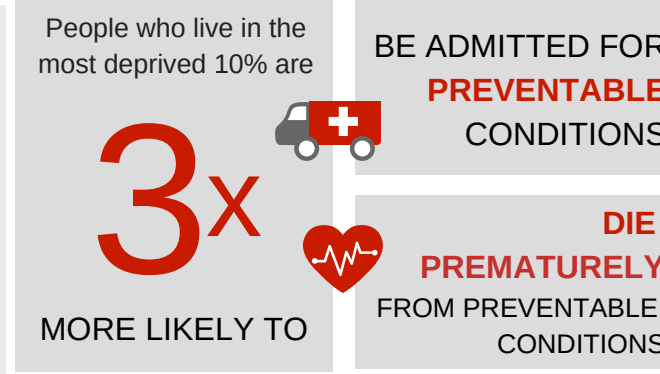
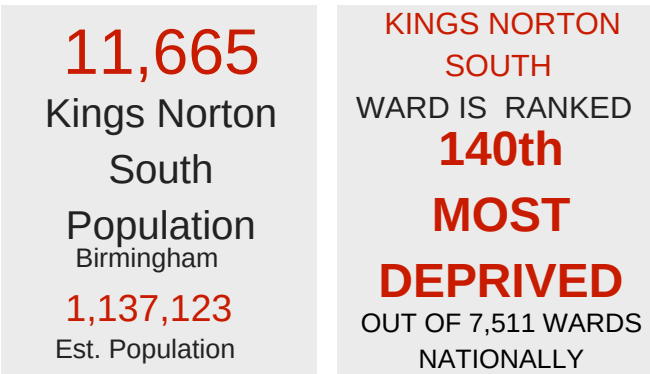
WORKING TOWARDS A HEALTHY CITY: HEALTH INEQUALITIES

Public Health, March 2019
Numbers have been rounded

KINGS NORTON SOUTH PICTURE

LIFE AT THE BOTTOM

LIFE COURSE



BIRMINGHAM LONGBRIDGE & WEST HEATH

WORKING TOWARDS A HEALTHY CITY: HEALTH INEQUALITIES

Public Health, March 2019
Numbers have been rounded

LONGBRIDGE & WEST HEATH PICTURE

19,948

Longbridge & West Heath
Population

Birmingham

1,137,123

Est. Population

LONGBRIDGE & WEST HEATH

WARD IS RANKED **873rd**

MOST

DEPRIVED

OUT OF 7,511 WARDS
NATIONALLY

LIFE AT THE BOTTOM

People who live in the most deprived 10% are

3x



MORE LIKELY TO

BE ADMITTED FOR **PREVENTABLE** CONDITIONS

DIE **PREMATURELY** FROM PREVENTABLE CONDITIONS

LIFE COURSE

PERSONS AGED 0-15 YEARS IN LONGBRIDGE & WEST HEATH

19.8%

PERSONS AGED 0-15 YEARS IN B'HAM

22.8%

CHILDHOOD OBESITY

LONGBRIDGE & WEST HEATH

12.1% RECEPTION 4-5 YEARS

26.4% YEAR 6 10-11 YEARS

LIFE EXPECTANCY

MOST DEPRIVED WARD

77.8y

+
2.0

LONGBRIDGE & WEST HEATH

79.8y

MOST AFFLUENT WARD

84.1y

-
4.3

People who live in the most deprived 10% are

3x



MORE LIKELY TO

BE IN CONTACT WITH **MENTAL HEALTH SERVICES**

HAVE A **LONG TERM CONDITION**

PERSONS AGED 16-64 YEARS IN LONGBRIDGE & WEST HEATH

63.9%

PERSONS AGED 16-64 YEARS IN B'HAM

64.3%

UNEMPLOYMENT

LONGBRIDGE & WEST HEATH

9.7%

BIRMINGHAM

11.1%

TENURE

LONGBRIDGE & WEST HEATH

62.8%

OWNER/
OCCUPIED

BIRMINGHAM

56.1%

20.8% 15.4%
RENTED FROM BCC

128,655

CHILDREN IN BIRMINGHAM LIVE IN THE **MOST DEPRIVED 10%** aged 0-15 years

1 IN 4

CHILDREN IN BIRMINGHAM LIVE IN **POVERTY**



PERSONS AGED 65+ YEARS IN LONGBRIDGE & WEST HEATH

16.3%

PERSONS AGED 65+ YEARS IN B'HAM

12.9%

LONE PENSIONERS

LONGBRIDGE & WEST HEATH

13.3%

BIRMINGHAM

11.6%

BIRMINGHAM NORTHFIELD

WORKING TOWARDS A HEALTHY CITY: HEALTH INEQUALITIES

Public Health, March 2019
Numbers have been rounded

NORTHFIELD PICTURE

10,554

Northfield
Population

Birmingham

1,137,123

Est. Population

**NORTHFIELD
WARD IS RANKED**

**1887th
MOST
DEPRIVED**

OUT OF 7,511 WARDS
NATIONALLY

LIFE AT THE BOTTOM

People who live in the
most deprived 10% are

3x



MORE LIKELY TO

BE ADMITTED FOR
PREVENTABLE
CONDITIONS

DIE
PREMATURELY
FROM PREVENTABLE
CONDITIONS

LIFE COURSE

**PERSONS AGED 0-15
YEARS IN
NORTHFIELD**

19.0%

**PERSONS AGED 0-15
YEARS IN B'HAM**

22.8%

**CHILDHOOD
OBESITY**

**NORTHFIELD
RECEPTION
4-5 YEARS**

13.8%

**YEAR 6 10-11
YEARS**

21.9%

LIFE EXPECTANCY

**MOST DEPRIVED
WARD**

77.8y

+
3.4

NORTHFIELD

81.2y

**MOST AFFLUENT
WARD**

84.1y

-
2.9

People who live in the
most deprived 10% are

3x



MORE LIKELY TO

BE IN CONTACT
WITH **MENTAL
HEALTH
SERVICES**

HAVE A
**LONG TERM
CONDITION**

**PERSONS AGED 16-64
YEARS IN
NORTHFIELD**

63.4%

**PERSONS AGED 16-64
YEARS IN B'HAM**

64.3%

UNEMPLOYMENT

NORTHFIELD

6.7%

BIRMINGHAM

11.1%

TENURE

NORTHFIELD

**74.7
%**

**OWNER/
OCCUPIED**

11.5%

PRIVATELY RENTED

BIRMINGHAM

**56.1
%**

17.9%

128,655

**CHILDREN IN
BIRMINGHAM LIVE
IN THE MOST
DEPRIVED 10%**

aged 0-15 years

1 IN 4

**CHILDREN IN
BIRMINGHAM LIVE
IN POVERTY**



**PERSONS AGED 65+
YEARS IN
NORTHFIELD**

17.6%

**PERSONS AGED 65+
YEARS IN B'HAM**

12.9%

LONE PENSIONERS

NORTHFIELD

14.9%

BIRMINGHAM

11.6%

BIRMINGHAM RUBERY & REDNAL

WORKING TOWARDS A HEALTHY CITY: HEALTH INEQUALITIES

Public Health, March 2019
Numbers have been rounded

RUBERY & REDNAL PICTURE

9,957
Rubery & Rednal
Population

Birmingham
1,137,123
Est. Population

RUBERY & REDNAL
WARD IS RANKED

715th
MOST
DEPRIVED

OUT OF 7,511 WARDS
NATIONALLY

LIFE AT THE BOTTOM

People who live in the
most deprived 10% are

3x



MORE LIKELY TO

BE ADMITTED FOR
PREVENTABLE
CONDITIONS

DIE
PREMATURELY
FROM PREVENTABLE
CONDITIONS

LIFE COURSE

PERSONS AGED 0-15
YEARS IN
RUBERY & REDNAL

22.2%

PERSONS AGED 0-15
YEARS IN B'HAM

22.8%

CHILDHOOD
OBESITY

RUBERY & REDNAL

11.3% RECEPTION
4-5 YEARS

20.4% YEAR 6 10-11
YEARS

LIFE EXPECTANCY

MOST DEPRIVED
WARD

77.8y

+
1.9

RUBERY &
REDNAL
79.7y

MOST AFFLUENT
WARD

84.1y

-
4.4

People who live in the
most deprived 10% are

3x



MORE LIKELY TO

BE IN CONTACT
WITH **MENTAL**
HEALTH
SERVICES

HAVE A
LONG TERM
CONDITION

PERSONS AGED 16-64
YEARS IN
RUBERY & REDNAL

64.1%

PERSONS AGED 16-64
YEARS IN B'HAM

64.3%

UNEMPLOYMENT
RUBERY & REDNAL

10.3%

BIRMINGHAM

11.1%

TENURE

RUBERY &
REDNAL

61.1%

OWNER/
OCCUPIED

20.0%

RENTED FROM BCC

BIRMINGHAM

56.1%

15.4%

128,655

CHILDREN IN
BIRMINGHAM LIVE
IN THE **MOST**
DEPRIVED 10%

aged 0-15 years

1 IN **4**

CHILDREN IN
BIRMINGHAM **LIVE**
IN POVERTY



PERSONS AGED 65+
YEARS IN
RUBERY & REDNAL

13.8%

PERSONS AGED 65+
YEARS IN B'HAM

12.9%

LONE PENSIONERS
RUBERY & REDNAL

12.9%

BIRMINGHAM

11.6%

BIRMINGHAM WEOLEY & SELLY OAK

WORKING TOWARDS A HEALTHY CITY: HEALTH INEQUALITIES

Public Health, March 2019
Numbers have been rounded

WEOLEY & SELLY OAK PICTURE

22,990
Weoley & Selly Oak
Population
Birmingham
1,137,123
Est. Population

WEOLEY & SELLY OAK
WARD IS RANKED
722nd
MOST
DEPRIVED
OUT OF 7,511 WARDS
NATIONALLY

LIFE AT THE BOTTOM

People who live in the most deprived 10% are

3x

MORE LIKELY TO

BE ADMITTED FOR
PREVENTABLE
CONDITIONS

DIE
PREMATURELY
FROM PREVENTABLE
CONDITIONS

LIFE COURSE

PERSONS AGED 0-15
YEARS IN WEOLEY &
SELLY OAK

21.4%
PERSONS AGED 0-15
YEARS IN B'HAM
22.8%

CHILDHOOD
OBESITY
WEOLEY & SELLY
OAK
10.3% RECEPTION
4-5 YEARS
23.8% YEAR 6 10-11
YEARS

LIFE EXPECTANCY

MOST DEPRIVED
WARD

77.8y

+
3.1

WEOLEY & SELLY
OAK

80.9y

MOST AFFLUENT
WARD

84.1y

-
3.2

People who live in the most deprived 10% are

3x

MORE LIKELY TO

BE IN CONTACT
WITH **MENTAL**
HEALTH
SERVICES

HAVE A
LONG TERM
CONDITION

PERSONS AGED 16-64
YEARS IN WEOLEY &
SELLY OAK

63.8%
PERSONS AGED 16-64
YEARS IN B'HAM
64.3%

UNEMPLOYMENT
WEOLEY & SELLY
OAK
11.9%
BIRMINGHAM
11.1%

TENURE

WEOLEY & SELLY
OAK

51.0
%

OWNER/
OCCUPIED

19.9%

RENTED FROM BCC

BIRMINGHAM

56.1
%

15.4%

128,655

CHILDREN IN
BIRMINGHAM LIVE
IN THE **MOST**
DEPRIVED 10%
aged 0-15 years

1 IN **4**

CHILDREN IN
BIRMINGHAM LIVE
IN **POVERTY**

PERSONS AGED 65+
YEARS IN WEOLEY &
SELLY OAK

14.8%
PERSONS AGED 65+
YEARS IN B'HAM
12.9%

LONE PENSIONERS
WEOLEY & SELLY
OAK
12.7%
BIRMINGHAM
11.6%