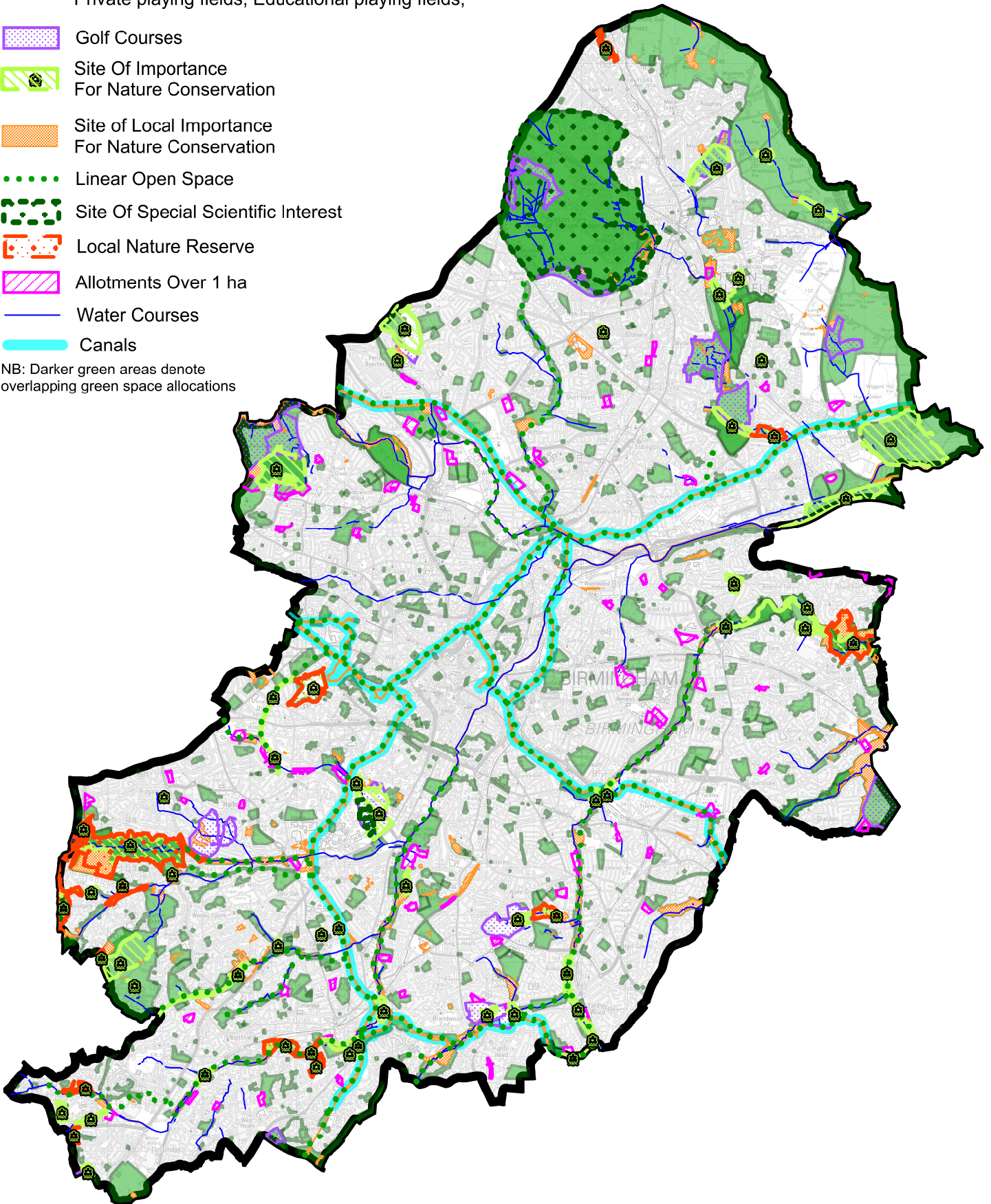


# Green Infrastructure

- Green Spaces -  
 Made up of Greenbelt, Public open space,  
 Public playing fields, Private open space,  
 Private playing fields, Educational playing fields,
- Golf Courses
- Site Of Importance  
 For Nature Conservation
- Site of Local Importance  
 For Nature Conservation
- Linear Open Space
- Site Of Special Scientific Interest
- Local Nature Reserve
- Allotments Over 1 ha
- Water Courses
- Canals

NB: Darker green areas denote overlapping green space allocations



This map is reproduced from the Ordnance Survey Material with the permission of Ordnance Survey on behalf of the Controller of Her Majesty's Stationery Office © Crown Copyright.

Unauthorised reproduction infringes Crown Copyright and may lead to prosecution or civil proceedings. Birmingham City Council. Licence No.100021326, 2015